

LGC

Yosemite Policy Makers Conference

March 15, 2018

Panama Bartholomy





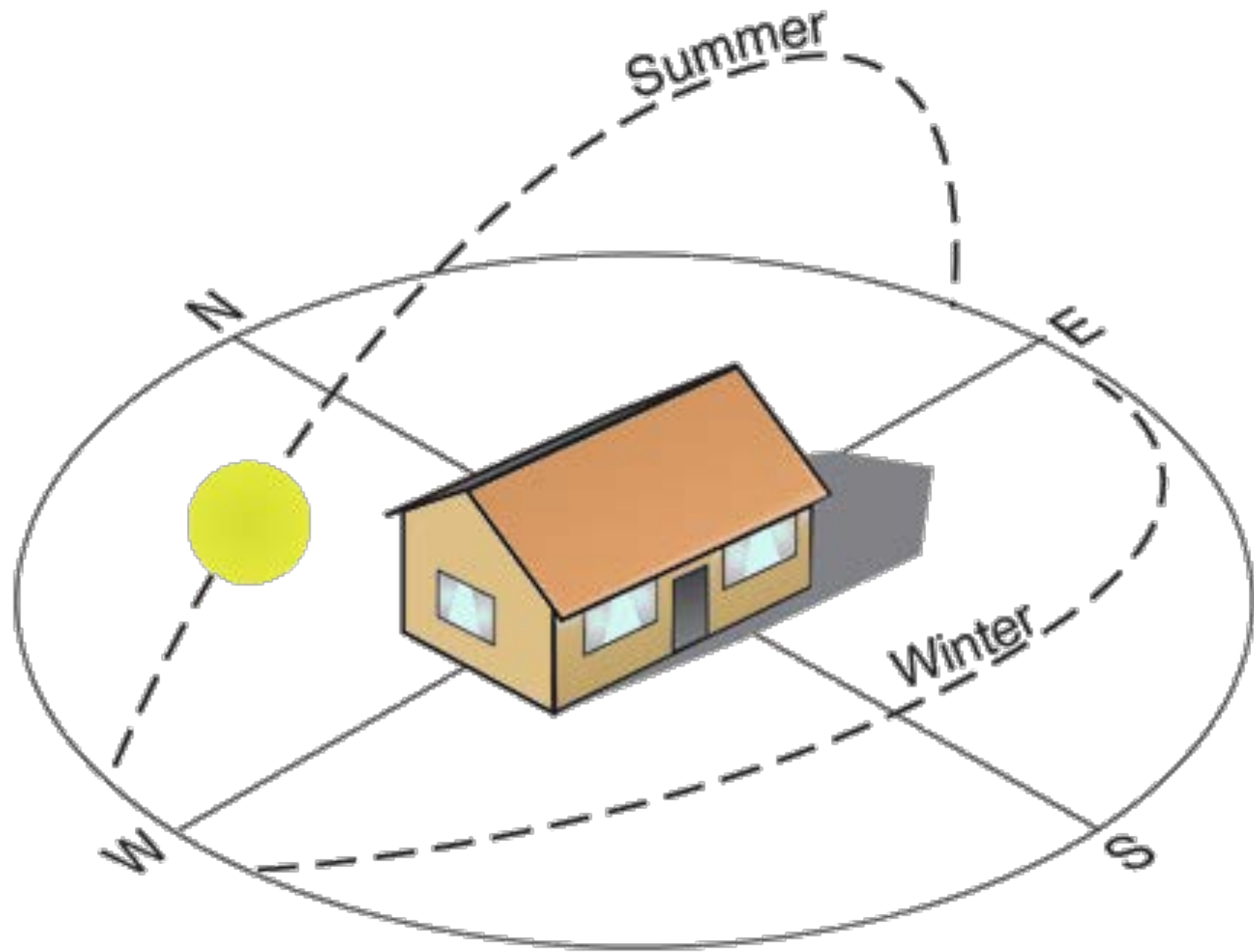


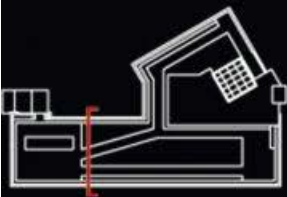
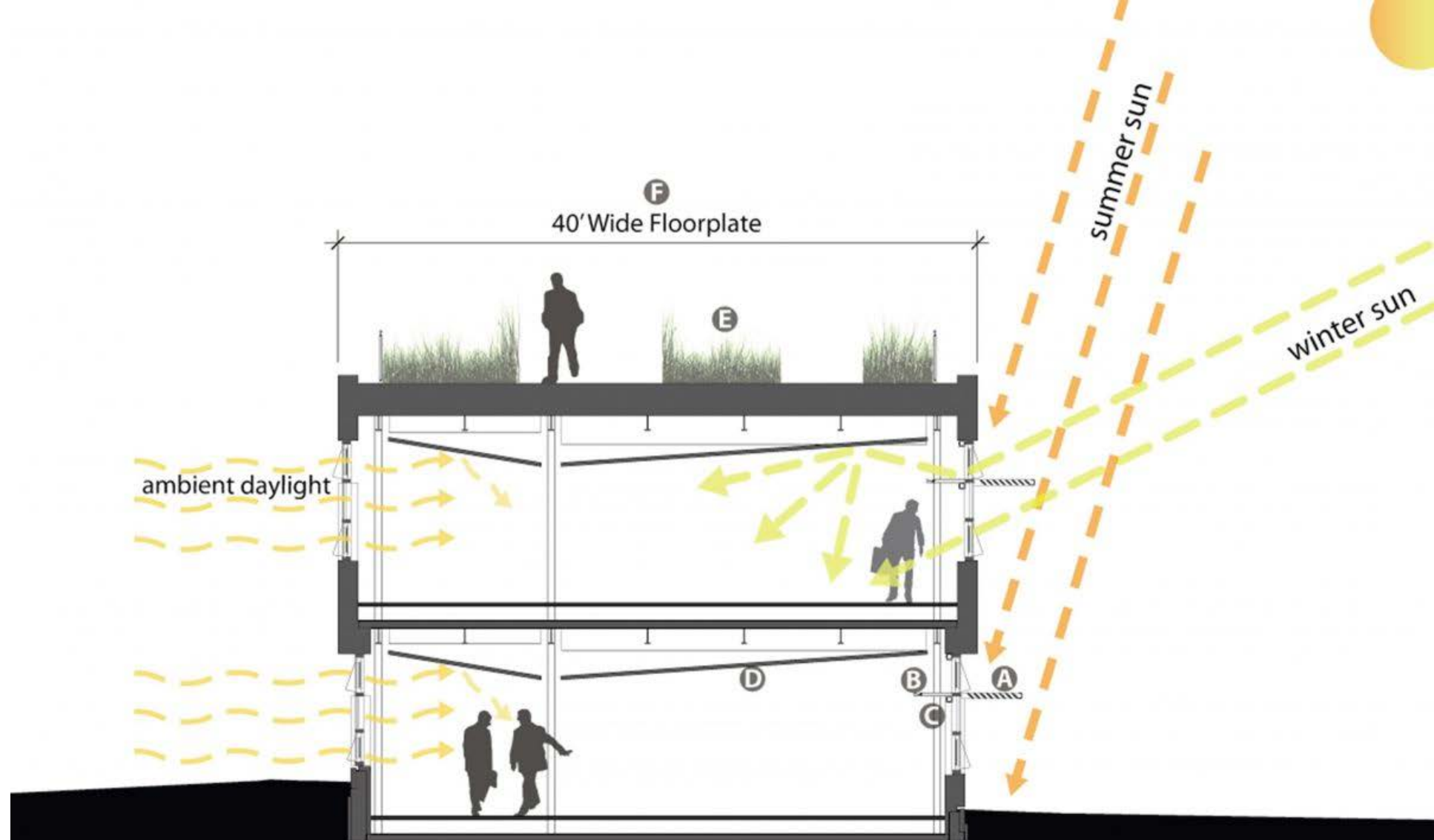


Local Government

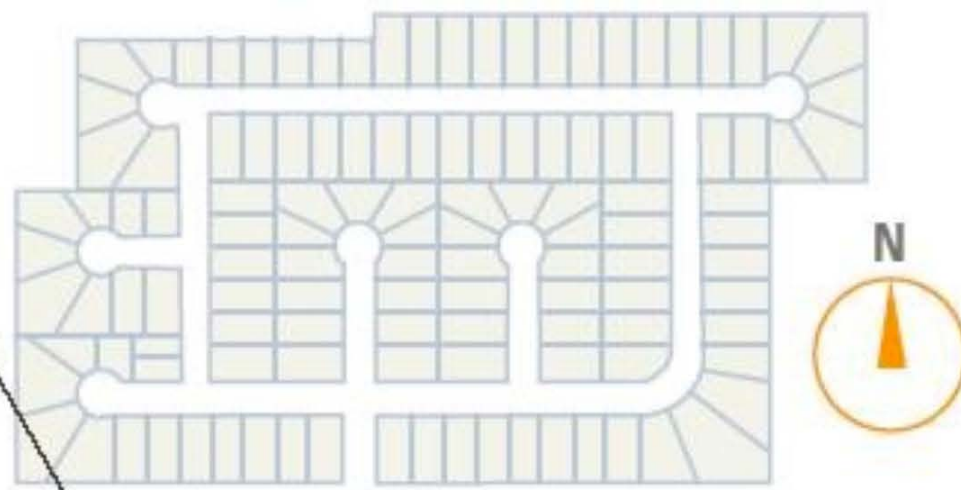
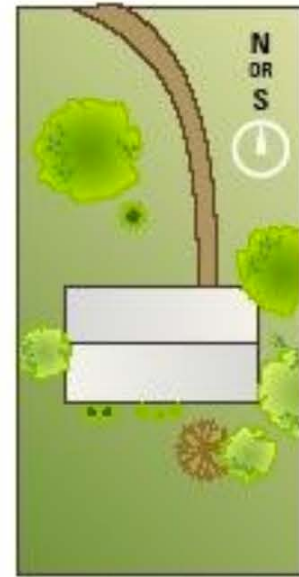


The Past

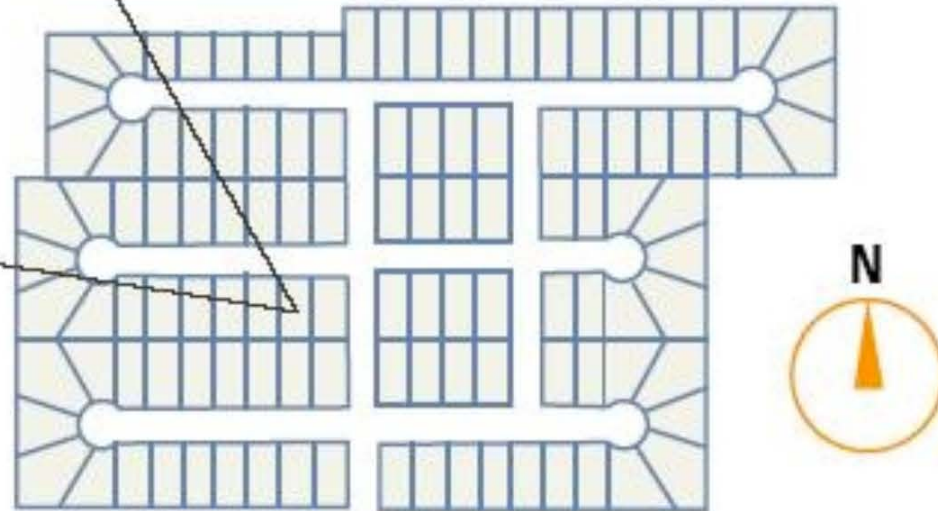




DAYLIGHTING DIAGRAM - SOUTH WING



Typical Subdivision

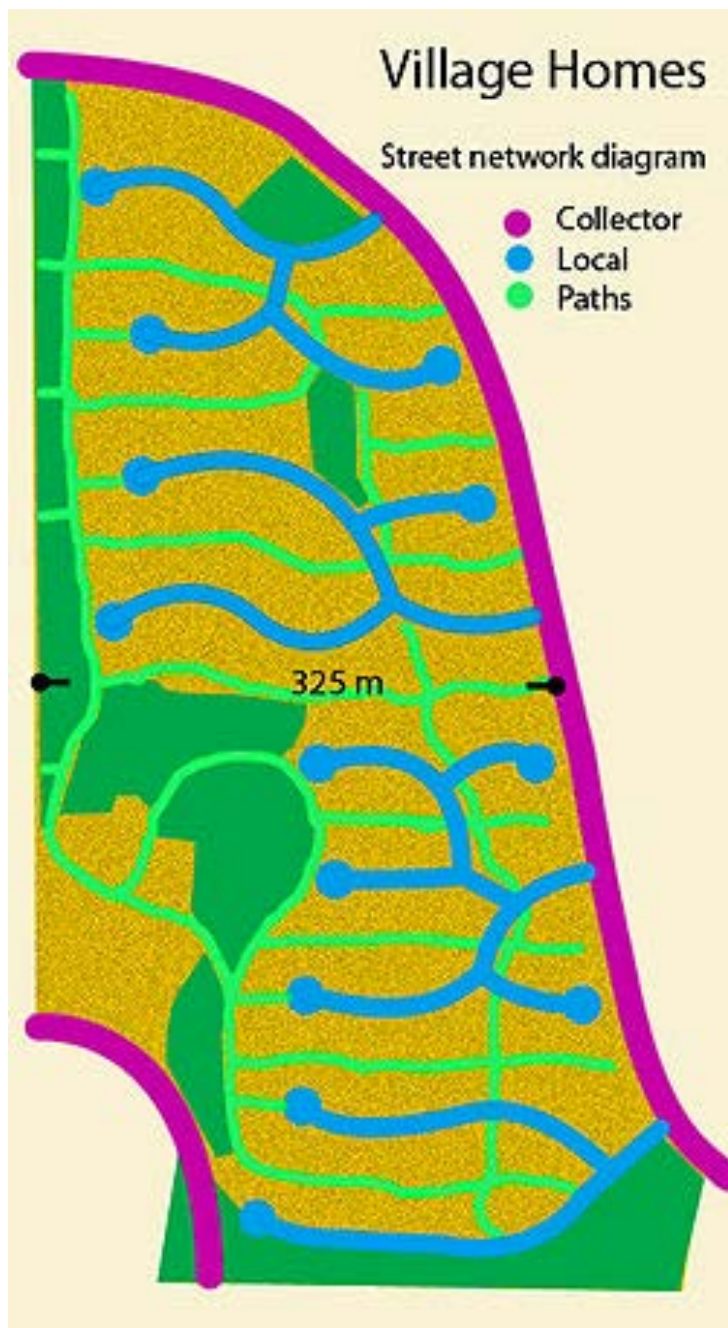


**Subdivision with Predominantly
North- and South-Facing Sites**

Source: Viera et al. 1992. p.3-5

Village Homes subdivision built in the late 1970s in Davis, California. The **layout** of the subdivision allowed every house to **face the winter sun**.





Government Code 66473.1

- (a) The design of a subdivision for which a tentative map is required ... shall provide, to the extent feasible, for future passive or natural heating or cooling opportunities in the subdivision.

The Present

THE END OF THE WORLD

VOTE FOR ME!





WE ARE STILL IN

The Ahwahnee Principles

for Resource-Efficient Communities



The Ahwahnee Principles for Resource-Efficient Communities, written in 1991 by the Local Government Commission, paved the way for the Smart Growth movement and New Urbanism.

These principles provide a blueprint for elected officials to create compact, mixed-use, walkable, transit-oriented developments in their local communities. Cities and counties across the nation have adopted them to break the cycle of sprawl.

If you like the newly emerging downtowns across the nation – full of people, activities and great public spaces – that's the Ahwahnee Principles in action.

Since then, the Ahwahnee Principles for Economic Development in 1997 and the Ahwahnee Water Principles in 2005 have been developed to complement this pioneering vision.

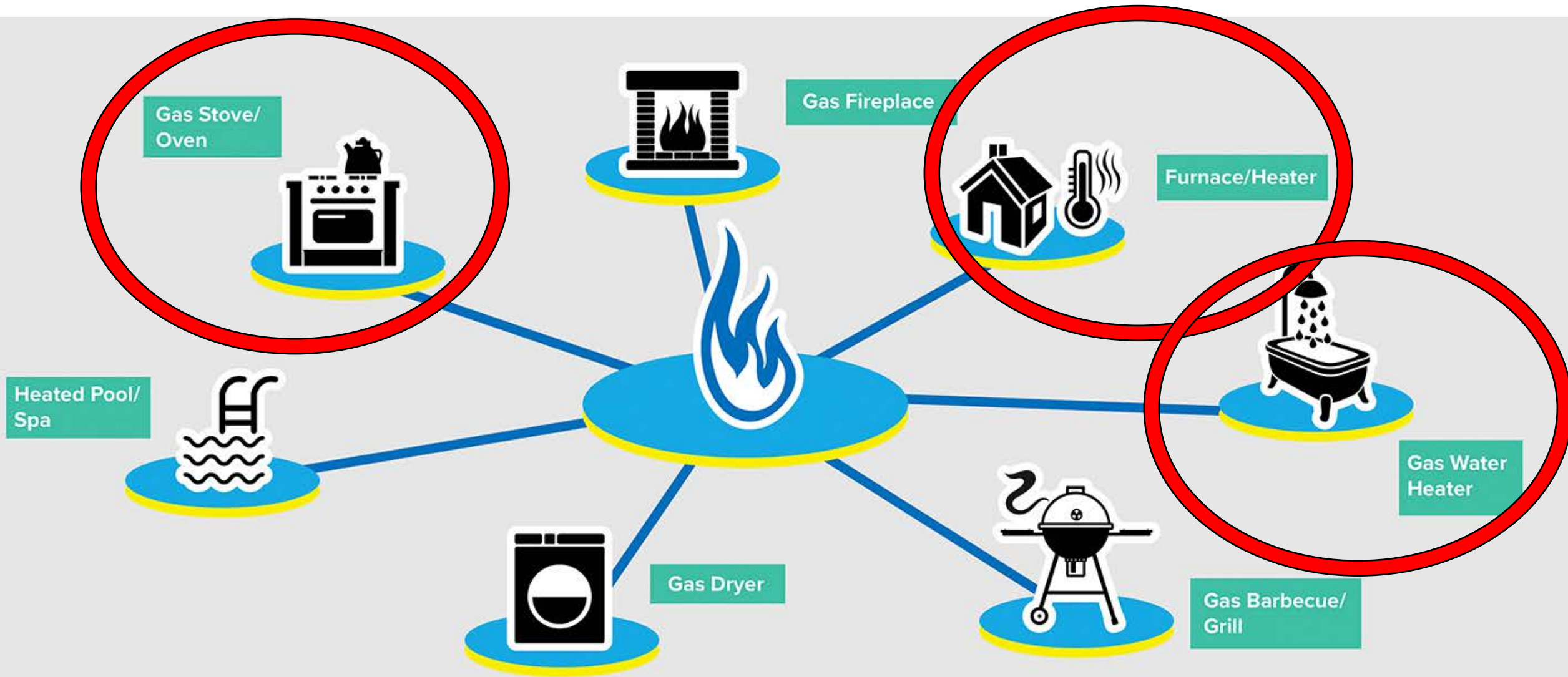


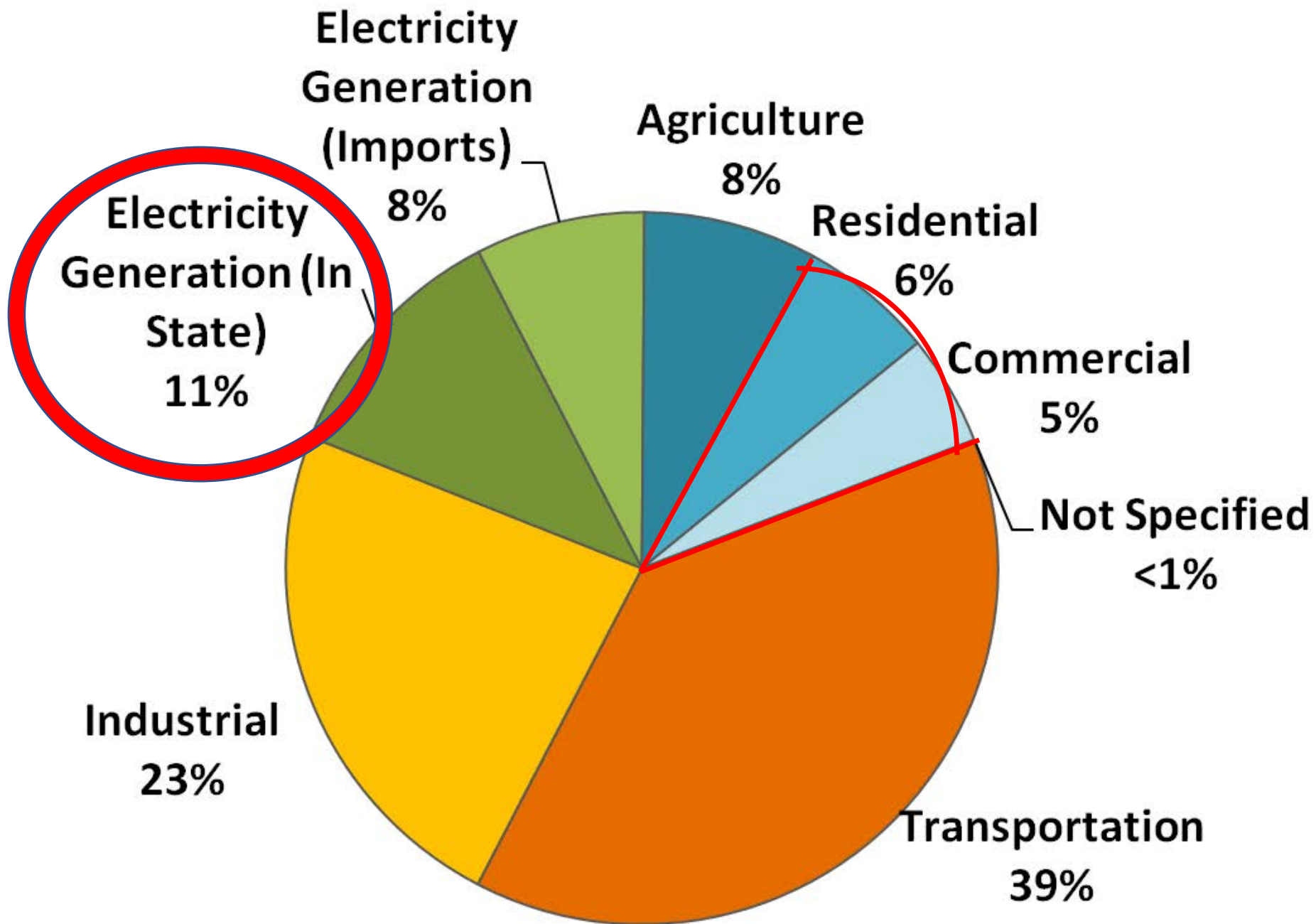
The Future

Methane is
84x more potent
than CO₂ in the short term

Methane







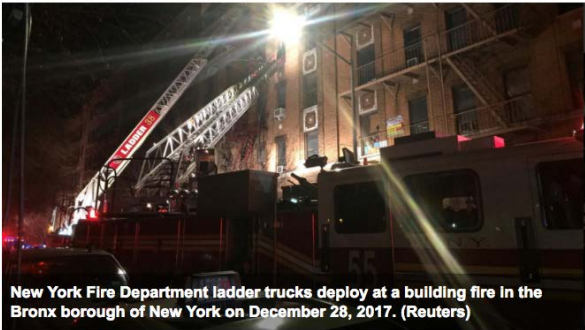
2015 Total CA Emissions: 440.4 MMTCO₂e







Apartment fire kills 12 in New York, four injured



AFP, New York
Friday, 29 December 2017

Text size A A A

Explosion in Brooklyn Apartment Injures 4: I

The explosion rattled windows and nerves in Gravesend
By Ken Buffa
Published at 10:28 AM EST on Jan 20, 2018 | Updated at 7:03 PM EST on Jan 20, 2018



Man injured in natural gas explosion in Boise

POSTED: 7:49 AM, Jan 5, 2018
UPDATED: 7:49 AM, Jan 5, 2018

Belgium: Bodies found after Antwerp apartment explosion

A suspected gas explosion in the Belgian city of Antwerp has claimed at least two lives and injured at least 14 people. The explosion ripped through apartment buildings, causing at least one building to collapse.



Gas Leak Believed to Blame for Fatal Lubbock Home Explosion

Lubbock authorities say they believe a gas leak is responsible for the explosion and fire in a home where a 25-year-old was killed.
Dec. 31, 2017, at 11:16 a.m.



GAS BLAST Man pulled from rubble after massive gas explosion destroys home and 'blew terrified people out of their beds'

Locals in Carnkie in Cornwall were rocked by the blast in a bungalow just after midnight today

By Neal Baker
22nd January 2018, 1:31 am | Updated: 22nd January 2018, 4:31 pm

Explosion, fire damages 2 apartments; n reported

News Record Staff Dec 27, 2017 9



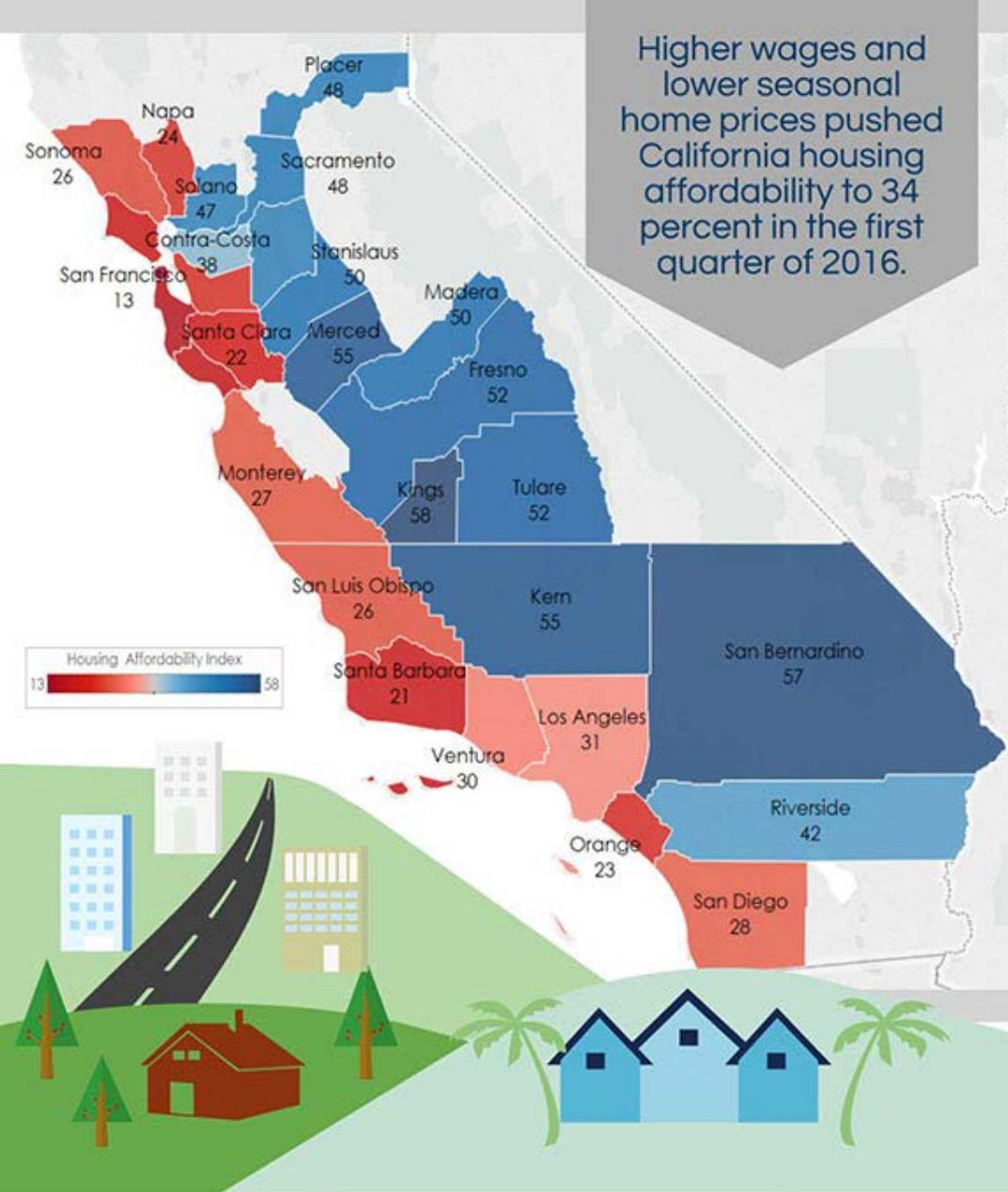
Buy Now

Elderly woman is missing after a New Year's Eve gas explosion tore through her bungalow

Officials: Man, 50, ejected from NJ home following gas explosion



A man was ejected from his home when a gas line reportedly exploded Friday night in Delran, New Jersey.



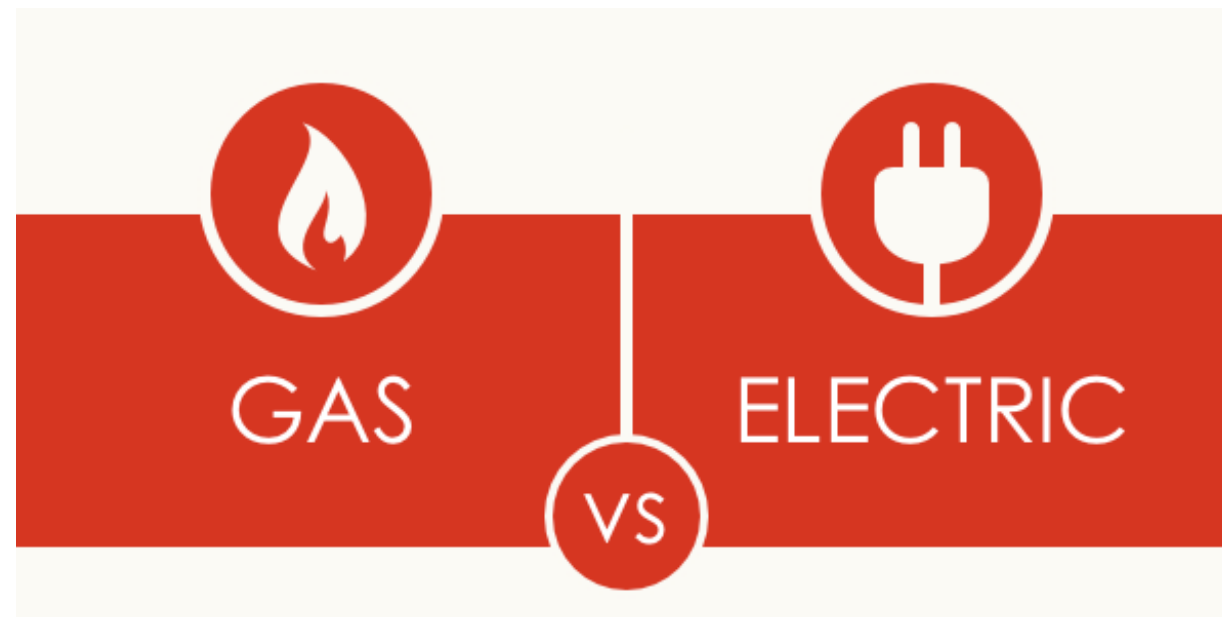
Housing Affordability Index

Percentage of households who can afford to buy a median-priced home.

1st Quarter, 2016 www.car.org/marketdata



CALIFORNIA
ASSOCIATION
OF REALTORS®





Price Quote	Source
\$8841 (single-family)	Palo Alto
\$17,634 (8-unit MF)	Palo Alto
\$1000 (single-family)	EPRI for SMUD
\$600 (per unit of MF)	Contractor quote, north coast
\$2000 (per bldg. of MF)	Contractor quote, north coast
\$14,768 (single-family)	PG&E, Richmond
\$10,000 (MF)	Pasadena



Price Quote/Estimate	Source
\$578 - \$718 (single family)	Homewyse Web Site
\$300 - \$1000 (single family)	Costhelper.com
\$259 - \$733 (single family)	homeadvisor.com
\$200 - \$500 (single family)	Fixr.com
\$550 (single family)	EPRI for SMUD
\$200/fixture (MF)	Contractor quote, north coast
\$200-\$300/fxtr. (MF)	Contractor quote, Pasadena



Rheem EcoSense 36 in. Vent
Length 3 x 5 in. Stainless Steel
Concentric Venting Straight Vent
for Rheem Indoor Tankless Gas
Water Heaters

Model# RTG20151D-1

NOT YET RATED

\$44²⁸



Rheem EcoSense 3 in. x 5 in.
Stainless Steel Vertical
Concentric Termination Vent Kit
for High Efficiency Tankless Gas
Water Heaters

Model# RTG20211

★★★★★ (3)

\$239⁰⁰



Rheem EcoSense 3 in. x 5 in.
Horizontal Stainless Steel
Concentric Termination Vent Kit
for Mid Efficiency Tankless Gas
Water Heaters

Model# RTG20210

★★★★★ (6)

\$89⁰⁰

Cost of Plumbing Indoor Gas Line to a Fixture: \$250-800
Cost of Venting Gas Exhaust: \$270-\$850



Rheem 3 Ton 14 SEER Heat Pump Split System R410A Refrigerant



from [ACWholesalers.com](https://www.acwholesalers.com)

Rheem · Heat Pump · With Heater

Overview for Rheem RH1T3617STANJA RP1436AJ1NAThis Rheem 3 Ton 14 SEER Heat Pump Split System Bundle comes with a highly featured and reliable Rheem RP1436AJ1NA heat pump ...

[See more details at ACWholesalers.com](https://www.acwholesalers.com) »

\$2,085.38

Free shipping. No tax

 [ACWholesalers.com](https://www.acwholesalers.com)

★★★★★ (3,949)



Rheem 3 Ton 14 SEER 80% AFUE 75K BTU R410A Complete Split System AC and Gas



from [Ingrams Water And Air Equipment](https://www.ingramswaterandairequipment.com)

Rheem

Condenser Model: RA1436AJ1NA Coil Model: RCF3617STAMCA Furnace Model: R801SA075417MSA Rheem 3 Ton 14 SEER 80% AFUE 75K BTU R410A Complete Split System AC and Gas Rheem RA14 3 ...

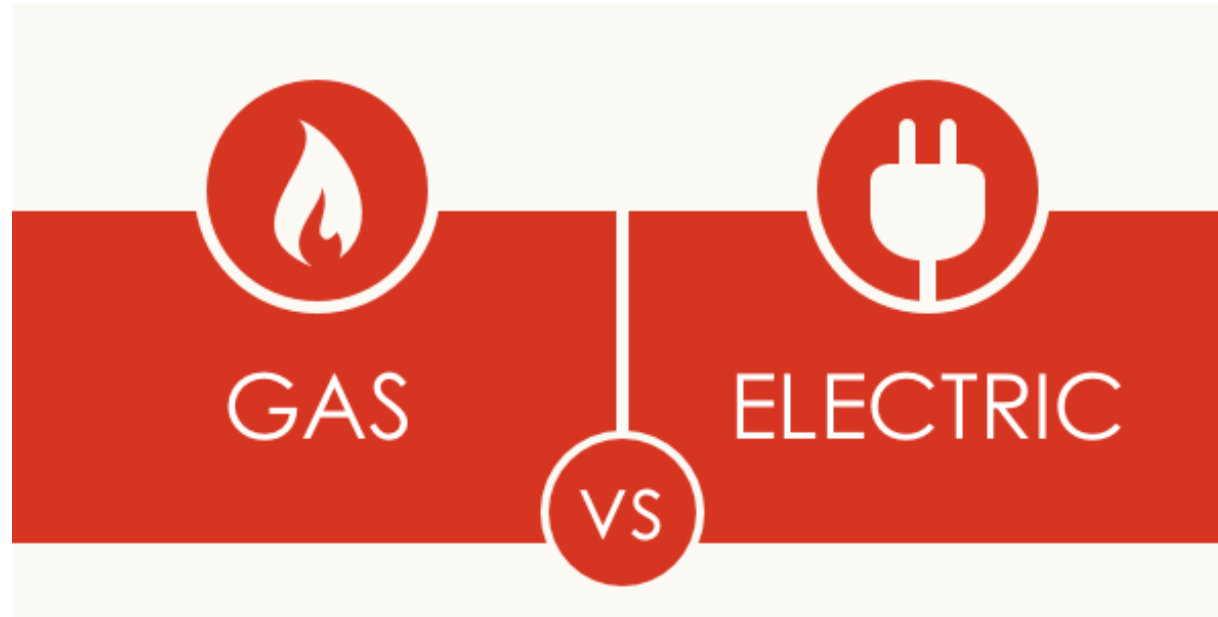
[See more details at Ingrams Water And Air Equipment](https://www.ingramswaterandairequipment.com) »

\$3,024.00

Free shipping. No tax

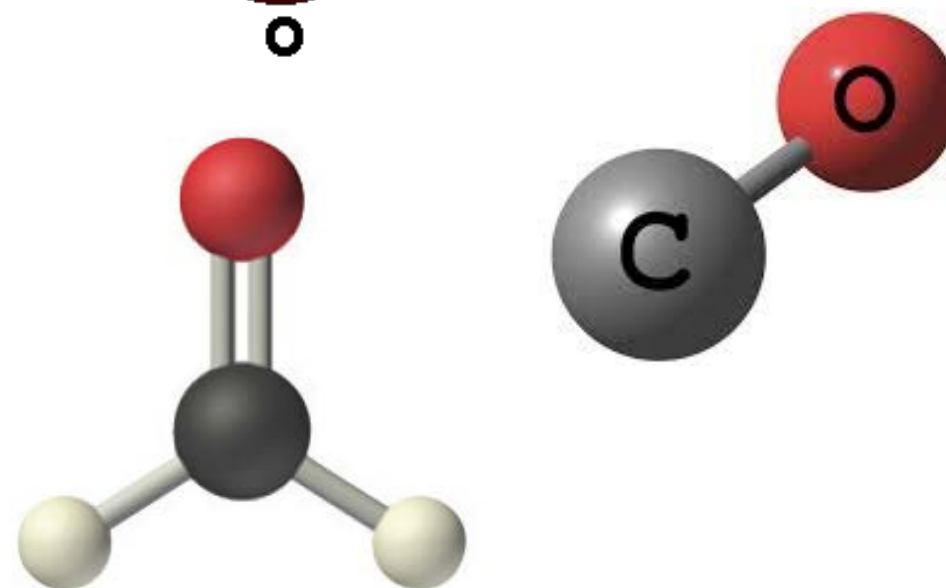
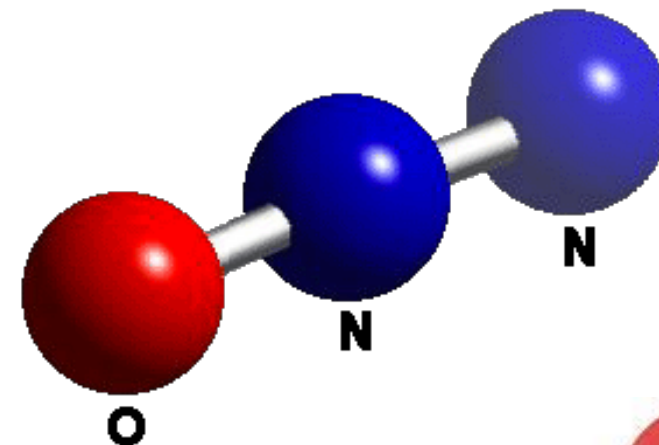
[Ingrams Water And Air Equipment](https://www.ingramswaterandairequipment.com)

★★★★★ (966)





NITROUS OXIDE



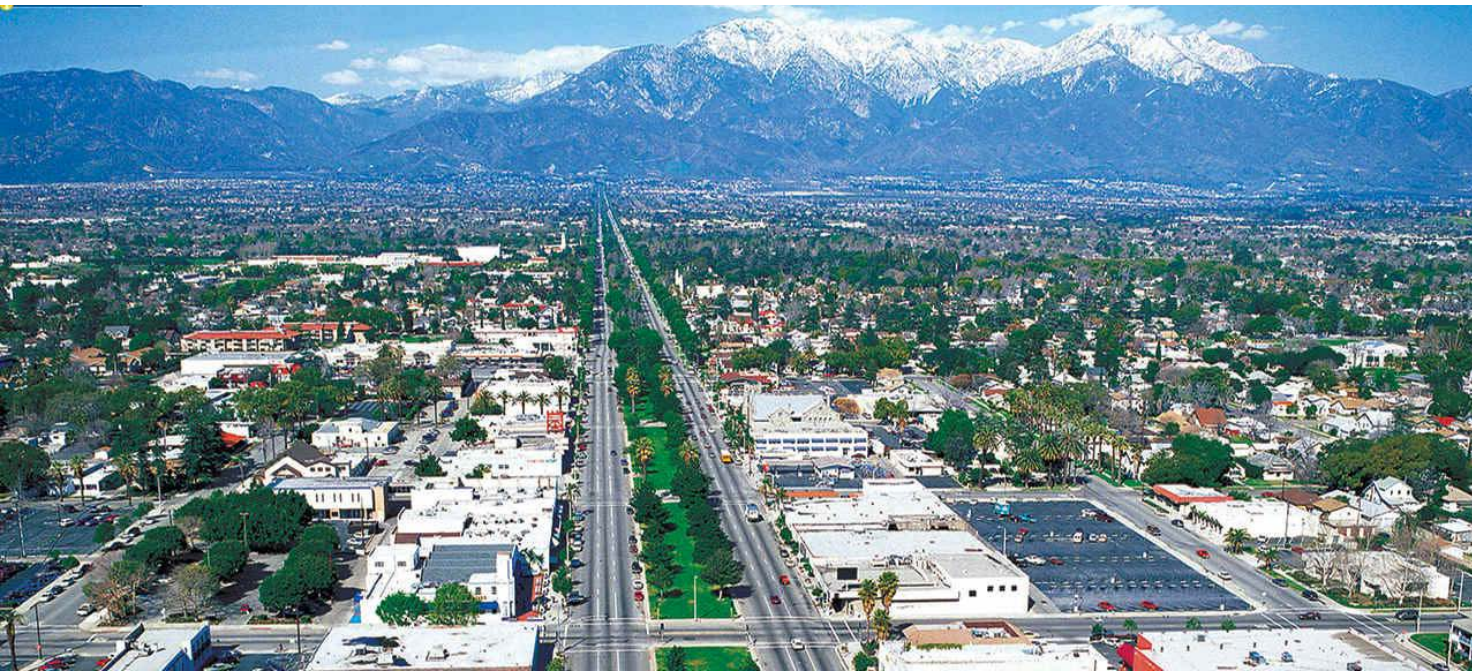
Formaldehyde,
CH₂O

[Pollutant Exposures from Natural Gas Cooking Burners: A Simulation-Based Assessment for Southern California](#)

[Jennifer M. Logue,^{1,2} Neil E. Klepeis,^{3,4} Agnes B. Lobscheid,¹ and Brett C. Singer^{1,2}, 2014](#)

ELECTRIFIED COOKING IS THE CHOICE OF CHEFS







Cheaper
Safer
Cleaner
=

Better



IT'S TIME TO ELECTRIFY

JOIN US



WHAT INSPIRES YOU?





JULIANA v. U.S. - CLIMATE LAWSUIT

"Exercising my 'reasoned judgment,' I have no doubt that the right to a climate system capable of sustaining human life is fundamental to a free and ordered society." –

- U.S. District Judge Ann Aiken



Thank you for your service!