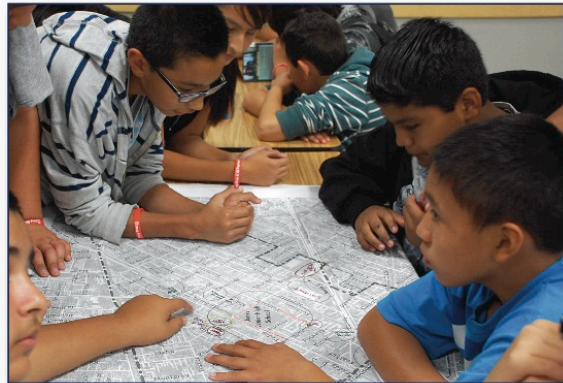




SAFE ROUTES TO SCHOOL MASTER PLAN

City of Baldwin Park



October 2014

Baldwin Park Department of Public Works
14403 Pacific Avenue
Baldwin Park, CA 91706
(626) 813-5255

Prepared by:



Safe Routes to School Master Plan

City of Baldwin Park

October 2014

Acknowledgements

Baldwin Park City Council

Mayor Manuel Lozano
Mayor Pro-Tem Ricardo Pacheco
Councilmember Cruz Baca
Councilmember Monica Garcia
Councilmember Susan Rubio

City of Baldwin Park

Daniel Wall, Public Works Director
David Lopez, Associate Engineer

California Center for Public Health Advocacy

Rosa Soto, Assistant Director
Christina Cardenas, Advocacy Manager
Connie Gonzalez, Administrative Assistant
Alfred Mata, Local Policy Specialist
Christine Quintero, Program Assistant

Baldwin Park Unified School District

Christine Dennis, Assistant Superintendent
Sael Castro, Translator
Lupe Palacios

THINKTogther

Letitia Aguino
Johanna Vaca

SRTS Master Plan Advisory Committee

Jose Contreras
Griselda Fernandez
Marlen Garcia
Maria Gonzalez
Marlene Flores-Avila
Captain Jill Poe
Diana Rivera-Beltran
Yolanda Sanchez
Steven Storvis

Design Team

Local Government Commission

Paul Zykofsky, Associate Director
Anthony Leonard, Project Manager

Ryan Snyder Associates

Ryan Snyder, President

Nelson\Nygaard Consulting Associates

Michael M. Moule, PE, TE, PTOE, Principal

Stantec

Rock E. Miller PE, PTOE, Principal

Funding provided through a California Department of Transportation (Caltrans) Community-Based Transportation Planning Grant and the City of Baldwin Park.

Views and opinions presented in this report do not necessarily represent the views or opinions of Caltrans or the California Business Transportation and Housing Agency



INTRODUCTION

The City of Baldwin Park has embarked on an effort to improve safety at all of its public schools. Baldwin Park has received both Federal and State SRTS grants to fund the Maine Avenue Complete Streets project. The Maine Avenue project will make numerous improvements to Maine Avenue from Los Angeles Street to Arrow Highway. These will be completed soon. The Maine Avenue project precedes this current planning effort and sets the stage for improvements called for in this Plan. This Plan will position the City well to receive future grants for both infrastructure projects and non-infrastructure programs.

The City partnered with the Local Government Commission and the California Center for Public Health Advocacy, and was awarded a grant from Caltrans to create a City of Baldwin Park Safe Routes to School (SRTS) Plan (the Plan). The Plan will include SRTS plans for each school, and citywide efforts to support and complement the individual plans. This document details work completed thus far and future steps.

There are two primary purposes to SRTS programs:

1. To make it safer for students to walk and bicycle to school
2. To increase the number of students walking and bicycling to school

In addition to safety benefits, there are health benefits for students who walk and bike to school. Environmental benefits result as fewer parents drive their children to school every day. Additionally, as children and families adopt more active lifestyles, their quality of life increases, they have more free time from driving less, and community relationships are strengthened. All of these benefits combine to create more livable neighborhoods surrounding schools where children walk or bike to school.

This document contains a program for a “5E” approach to making walking and bicycling safer and more attractive to Baldwin Park’s students and parents. The 5Es include the following:

- Engineering—to make physical improvements to the routes that students use to walk or bicycle to school
- Education—to teach students safe walking and bicycling habits, to teach parents the importance of safe driving habits, and to emphasize health and environmental benefits
- Encouragement—to promote walking and bicycling to school so more students choose to do so
- Enforcement—to ensure that rules and laws of the road are followed, as well as safe pick-up and drop-off practices are adhered to at the schools

- Evaluation—to track the Plan to assess its success and to modify it accordingly

Experience shows that this approach yields successful results in both making our communities safer to walk and bicycle in, and increasing the number of students doing so.

The Caltrans grant funded a range of efforts at the schools to initiate this Plan. The grant was used to do the following:

- Conduct SRTS workshops at schools
- Assess the safety issues
- Plan physical modifications to the routes

This project began in August of 2013. In September of 2013 the consultant team began conducting SRTS workshops for the stakeholders at each school. Three nationally certified SRTS instructors from the consultant team facilitated the workshops. The workshops began with a presentation that described why SRTS is important, along with a sampling of engineering devices that can be applied to make walking and bicycling safer. Attendees also saw presentation modules on education, encouragement, and enforcement programs. The workshops provided Spanish-speaking residents at all the schools with translated presentation slides along with simultaneous interpretation with headphones.

After the presentation, stakeholder attendees walked around the school and identified safety concerns at particular locations along common routes to each school. Upon returning to the presentation room, attendees drew on large-scale maps of their schools and surrounding areas. Attendees marked common walking and cycling routes to their school and identified key issues and locations needing improvement. They identified general safety issues, as well as location-specific safety issues. They also listed potential education, encouragement, and enforcement programs that might work at their schools. These led to the creation of SRTS plans for each school.

Since Baldwin Park high schools are located adjacent to elementary and middle schools, the team conducted joint workshops and prepared joint plans for these.

The plans for each school contain detailed engineering concepts. They also include a bullet-pointed list of some education, encouragement, and enforcement ideas that workshop attendees mentioned as potential programs.

After the draft of this plan was released and reviewed by City staff, a final community workshop was conducted on April 29, 2014. Community members were presented with the draft projects and program plans for each school, and offered a chance to comment and offer additional ideas. The ideas received were then incorporated into the existing projects and recommendations in this plan.

This Plan updates SRTS planning work conducted in 1995 by Baldwin Park. The 1995 SRTS Plan identified specific street improvements near each school in a similar fashion to this Plan. Signals, crosswalk striping, signs and other improvements were called for. Those improvements have been completed. This Plan moves Baldwin Park to the next step. This update utilizes the latest devices and design guidance which have changed significantly since 1995.

EVALUATION

In the beginning of the process, baseline surveys were taken to learn about existing commute to school patterns. As the Plan's programs unfold, they should show increases in the number of students walking and bicycling. Since engineering improvements (physical modifications made to streets and intersections) will likely be made after this planning effort ends, initial improvements will result from the programs alone. Further increases can be expected once the physical improvements are made. Table 1 below shows results of the first baseline tally conducted in classrooms in the fall of 2013. Students identified the way they commute to school by all the modes that are commonly used. "Other" may include skateboards, scooters or taxis.

Table 1: Baseline Commute to School Tally

School	Walk	Bicycle	Other Self-Driven	School Bus	Family Vehicle	Carpool with Children of Other Family	Public Bus	Other	Number of Students
Bursch Elementary School	104	1	1	10	189	13	0	0	318
Central Elementary School									
De Anza Elementary School	174	12	3	111	252	7	0	0	559
Elwin Elementary School	133	1	5	19	193	15	0	0	366
Foster Elementary School	206	2	5	58	283	21	7	1	583
Geddes Elementary School	145	3	5	112	414	28	0	0	707
Kenmore Elementary School	175	0	1	52	258	12	0	2	500
Margaret Heath Elementary School	166	0	0	7	304	34	0	0	511
Pleasant View Elementary School	124	4	3	16	181	31	0	1	360
Santa Fe Elementary School	28	0	0	0	194	31	0	3	256
Tracy Elementary School	172	0	0	28	351	32	1	1	585
Vineland Elementary School	208	9	4	53	369	41	0	1	685
Walnut Elementary School	118	1	5	11	332	32	1	4	504
Holland Middle School	176	11	30	34	275	24	0	0	550
Jones Jr. High School	181	5	0	35	223	19	1	5	469
Olive Middle School	97	3	5	21	325	16	0	0	467
Sierra Vista Jr. High School	275	5	3	32	399	31	1	0	746
TOTAL BY MODE	2482	57	70	599	4542	387	11	18	8166
% BY MODE	30.39%	0.70%	0.86%	7.34%	55.62%	4.74%	0.13%	0.22%	

School	Walkers	Riders	Number of Students
Central Elementary School	221	302	523

Notes: Tallies were taken for Grades 1-8 between the dates of 10/7/13-10/21/13. High School students were not tallied. Central Elementary used different categories for their tally.

SRTS PLANS BY SCHOOL

Comments from the SRTS workshops were brought along when fieldwork was conducted so that the resulting plans address the issues raised. The fieldwork also identified issues observed, which the plans address. The schools are presented in the order when the workshops were conducted. The workshops were grouped with the elementary schools that feed each corresponding middle school.

The planned physical improvements along school routes are described in the following pages. The Design Guidance section at the end of this document provides definition and guidance on these improvements. All bulb-outs and curb extensions will include perpendicular curb ramps and truncated dome tactile devices for the sight impaired. All pedestrian signals include audible signals for the sight impaired. All parkways planned for paving will ideally be paved with porous concrete for infiltration.

This is a *planned* list of improvements. The list gives the City projects that it can seek funds for. The City may want to change the list over time, as the list is conceptual. Engineering will need to be conducted prior to construction.

Crossing improvements are numbered according to their location in this document.

Maps on the following pages illustrate common routes that students take to get to school. The proposed improvements were planned along these routes.

The City should consider implementing some of the less expensive items first. Some items are relatively inexpensive and many can be put in within a short time frame after this Plan has been adopted. On the other hand, devices that require construction, and perhaps drainage modification, are significantly more expensive and may become long-term expenditures. Table 2 below shows some of the devices for consideration of short-term or long-term implementation.

Table 2: Short-Term Vs. Long-Term Devices

Short-Term Devices	Long-Term Devices
Crosswalks	Curb extensions
Advanced stop/yield lines	Crossing islands
Signs	Hybrid beacons
Countdown signals	Raised crosswalks
Curb ramps	Sidewalks
Bike lanes	Paths
Red curbs	Drainage modifications
Rapid flash beacons	

However, the City should take extra care with uncontrolled crossings, especially of multi-lane streets. Research has shown that simply marking a crosswalk on multi-lane streets with over 12,000 vehicles per day may result in more pedestrian crashes. The research recommends that other devices, such as but not limited to crossing islands, advanced yield lines, curb extensions and beacons are needed to make these pedestrian crossings safe. So in these cases, new crosswalks should be put in with some devices that are more expensive.

In addition to cost, the City should also consider means of prioritizing projects. The City won't be able to fund all of the improvements at once so they will have to be phased in. In order to prioritize projects the city can apply such criteria as, but not limited to:

- Crash history
- Traffic volumes
- Pedestrian volumes
- Number of travel lanes
- Width of the street
- Traffic speed
- Size of the school
- Community support

The City should also seek opportunities to piggy back on other projects. For example, the Maine Avenue project will soon make improvements that will benefit a number of schools. A future Olive Street project could do the same. Implementing a citywide bicycle plan will coincide with bikeway projects in this Plan. Resurfacing projects present ideal opportunities to stripe bike lanes, crosswalks, advanced yield lines, etc.

The plans for each school are presented in an order that groups elementary schools with the middle schools that they feed into in the same area of the city.



Santa Fe Elementary School

SRTS Workshop

A SRTS workshop was conducted on September 19, 2013. The following key stakeholders attended:

- School police
- Parents
- Representatives from the California Center for Public Health Advocacy



Safety Issues Raised at the Stakeholder Workshop or Through Field Observations

General

- Speeding
- Double parking
- Narrow sidewalks
- Wide streets
- Poor signs, signals, and markings
- Parent drivers not obeying protocol

Location-Specific Issues

- Baldwin Park Blvd. & Ohio St.
 - wide street
 - speeding cars
- Baldwin Park Blvd. & Benbow St.
 - no crosswalk here in front of the school
 - parents stop adjacent to the red curb on the east side of the street, blocking sight lines for other parents exiting the school driveway
- Baldwin Park Blvd. & Olive St.
 - No crossing guard
- Ohio St. & Landis Ave.
 - lots of traffic (congestion) during school arrival and dismissal
 - no crossing guard
- Maine Ave. & Ohio St.

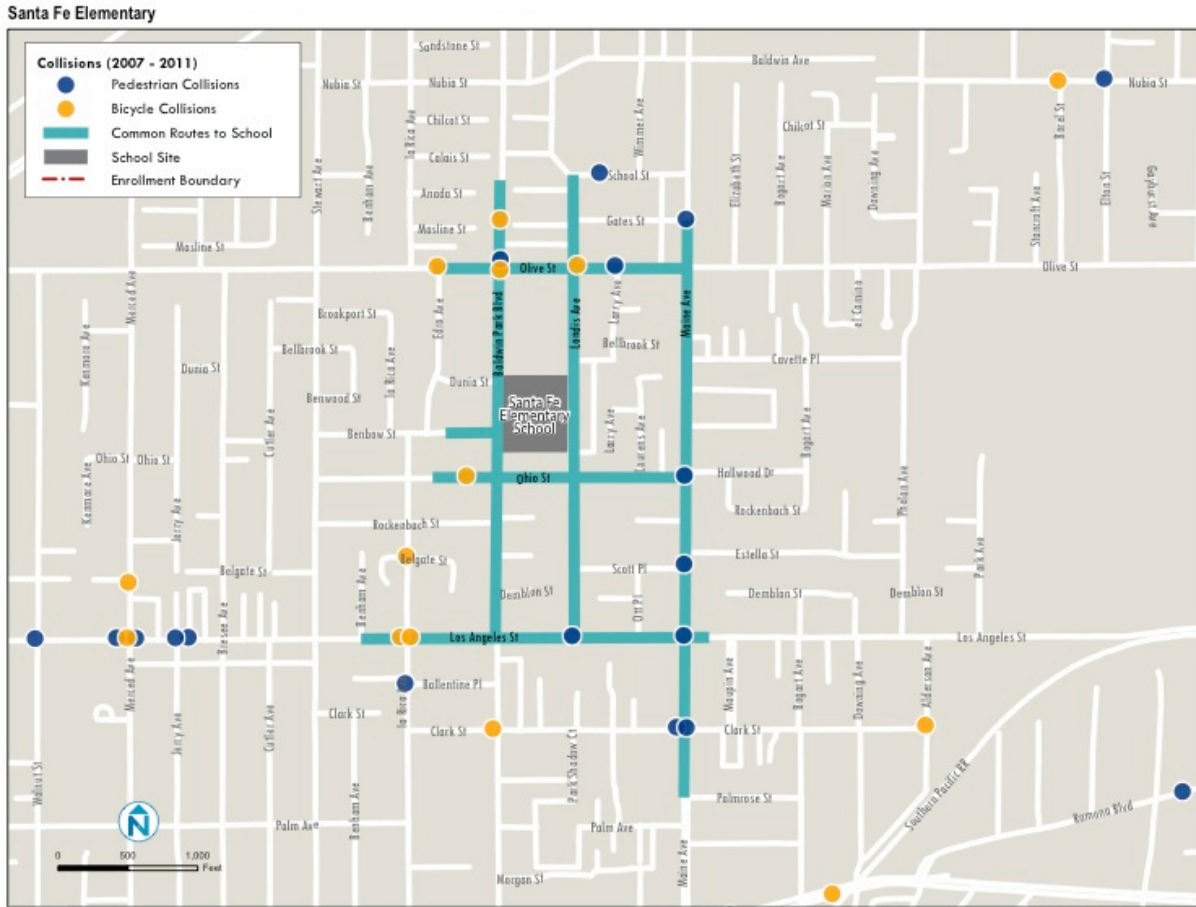
- near the SW corner, the sidewalks on the south side of Ohio Street and the west side of Maine Ave. are narrow with power poles and other obstructions
- Los Angeles St. & La Rica Ave.
 - lack of visibility of the crosswalk due to parked cars
 - many collisions
 - difficult to cross here due to heavy traffic
 - scary for kids

(issues raised at workshop for Geddes Elementary, but it is more relevant to Santa Fe Elementary)

- Along Baldwin Park Blvd.
 - double parking
 - missing sidewalk on the west side south of Benbow St.
 - missing sidewalk on the west side north of Los Angeles St., and there are often parked cars and trash cans in the parking lane here
 - drivers parking in the red zone near the school driveway exit
- Along Landis Ave.
 - lots of traffic during school arrival and dismissal
 - pedestrians must cross driveways to the rear parking lot and the drop-off/pick-up area
 - no direct pedestrian access at the rear parking lot
 - speed hump markings are hard to see, and there is a missing “BUMP” sign for southbound traffic

Maps

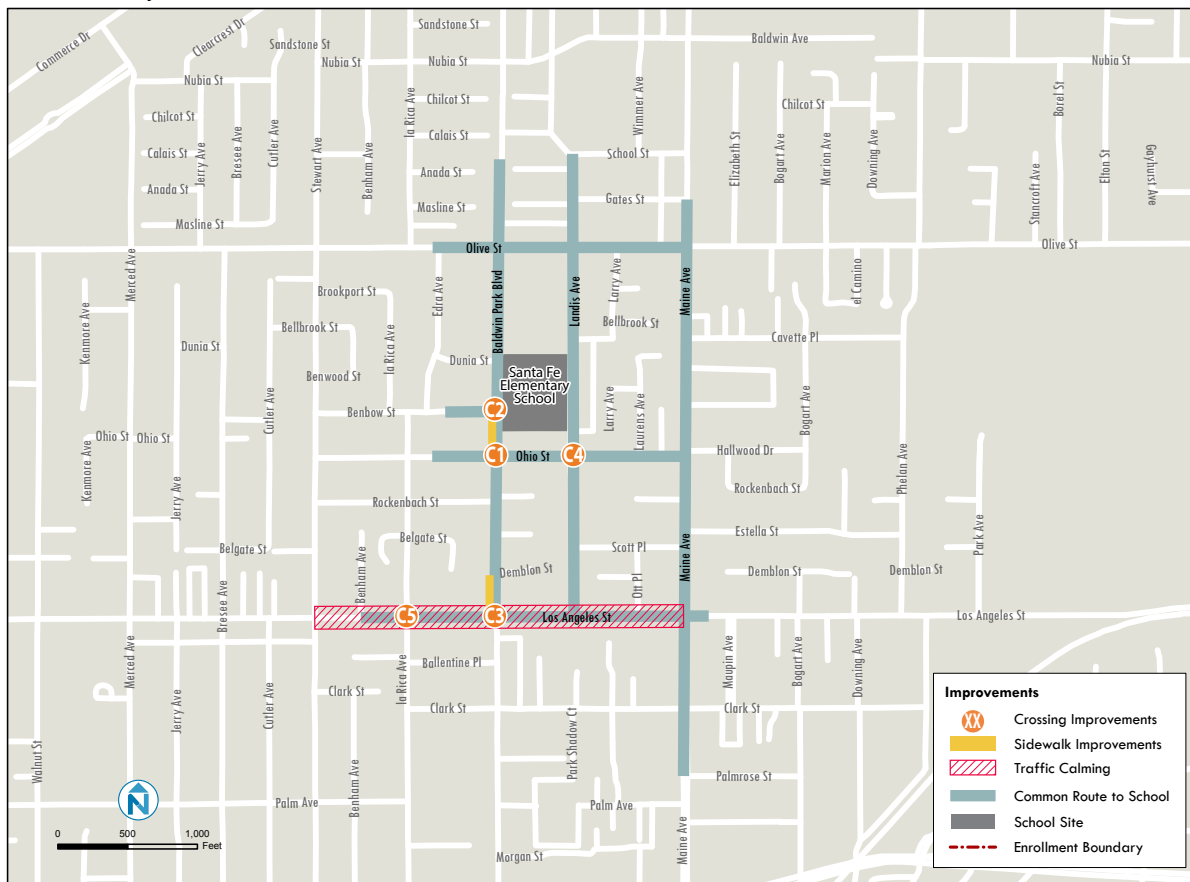
The following map displays bicyclist and pedestrian involved crashes for a five-year period between 2007 and 2011.



California Transportation Injury Mapping System data (2007-2011)

The map below shows the proposed engineering projects along common routes used by students to get to school.

Santa Fe Elementary



Existing Conditions and Engineering Recommendations

Crossing Improvements

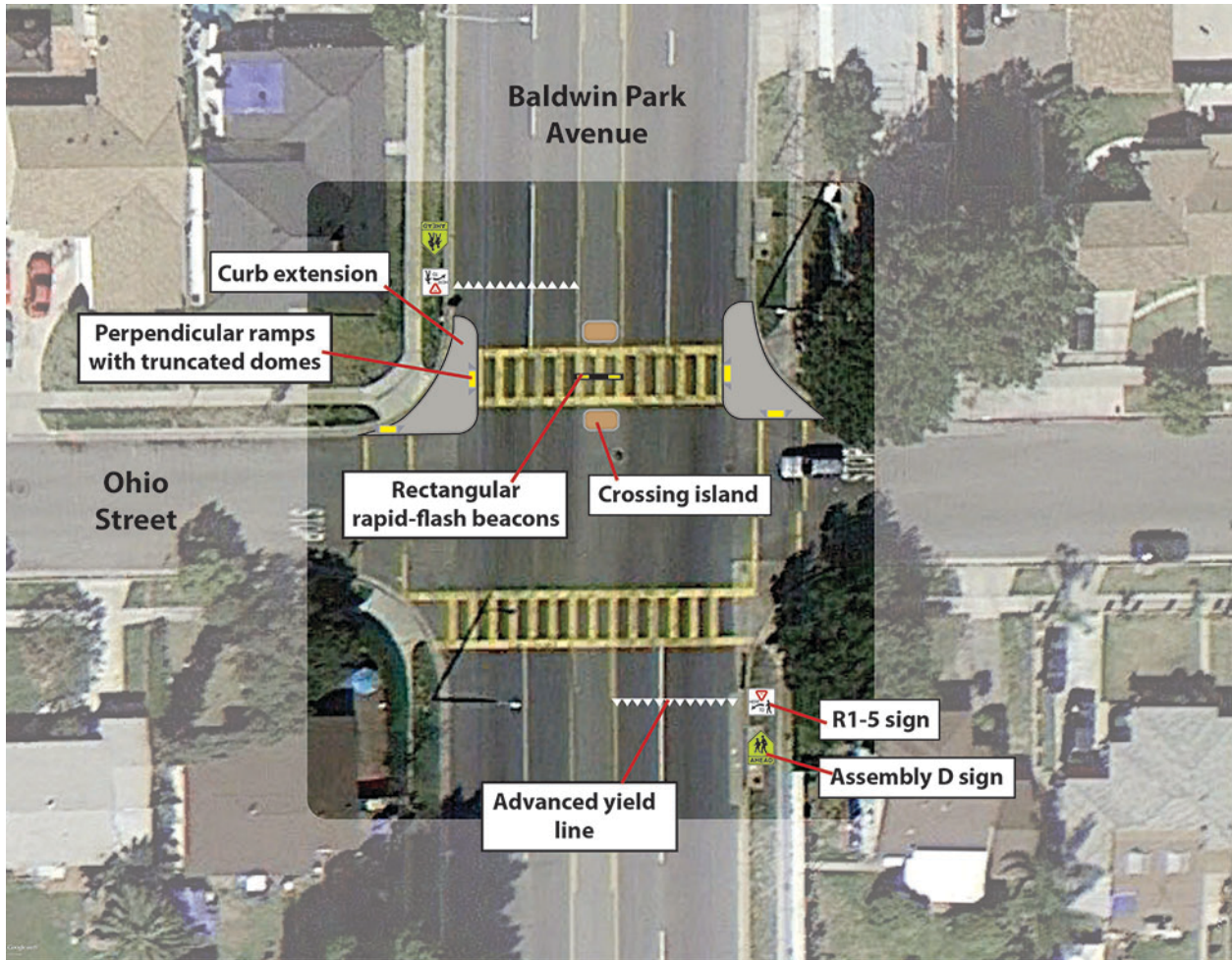
C1. Baldwin Park Blvd. & Ohio St.

Existing

- 4-way intersection
- 2 lanes in each direction plus a left turn lane on Baldwin Park Blvd.
- 2-way stop for Ohio St.
- Yellow ladder crosswalks for both crosswalks across Baldwin Park Blvd.
- Yellow transverse-line crosswalks for both crosswalks across Ohio St.
- Crossing guard controls the north leg (across Baldwin Park Blvd.) and east leg (across Ohio St.) during school arrival and dismissal times

Proposed

- Add rectangular rapid flash beacons for the north leg crosswalk across Baldwin Park Blvd. (1)
- Add advanced yield lines for both crosswalks across Baldwin Park Blvd. (2)
- Add R1-5 signs to both crosswalks (2)
- Add Assembly D signs to both crosswalks (2)
- Add curb extensions to both crossing faces of the north leg crosswalk (2)
- Add a crossing island for the north leg crosswalk using 1 of 2 options: (1)
 - add an island in the existing 2-way left-turn lane and either prohibit southbound left turns or allow southbound left turns from the leftmost through lane
 - add an island by tapering lanes and 1 or both parking lanes to achieve at least a 6' wide island



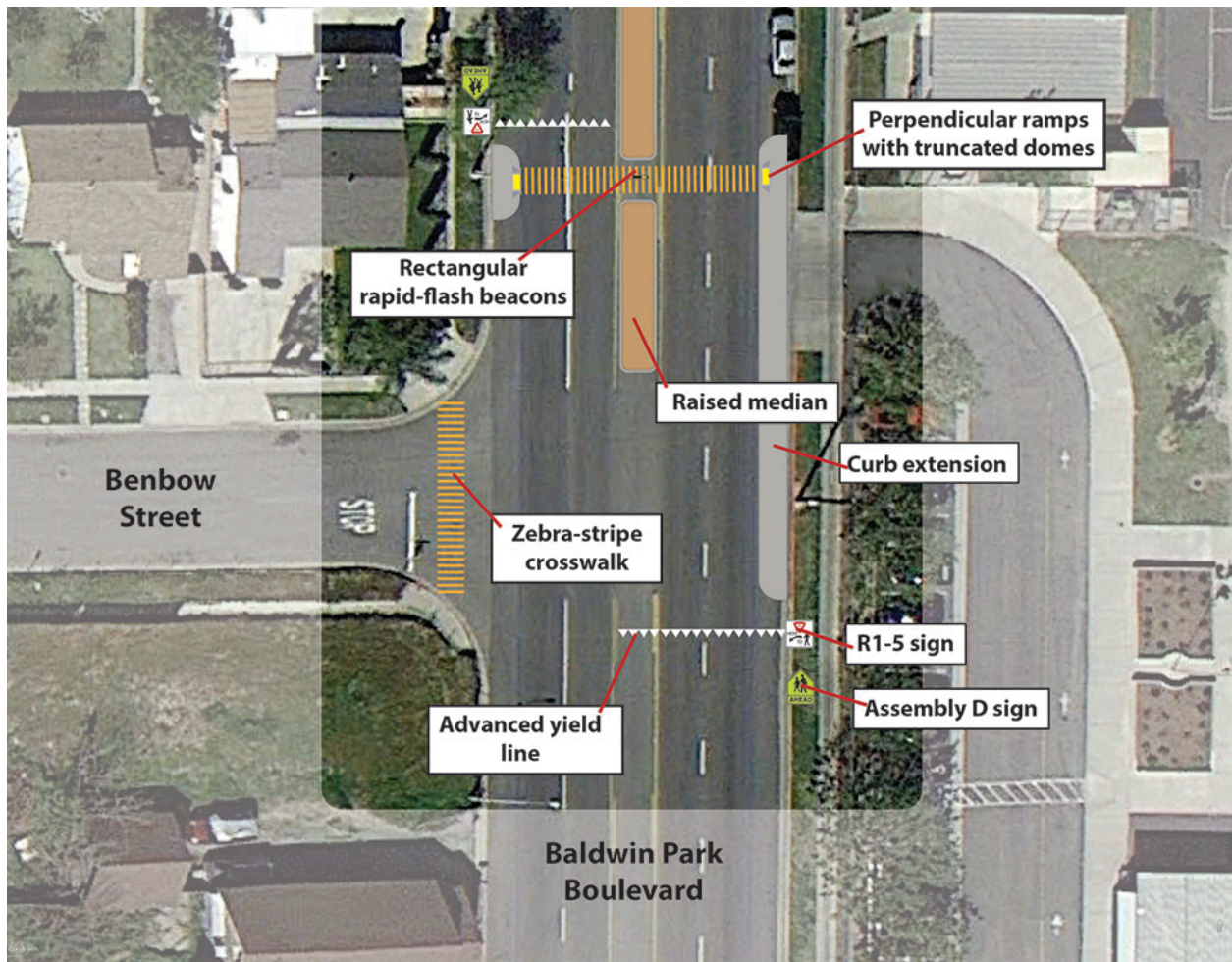
C2. Baldwin Park Blvd. & Benbow St. and Santa Fe School driveway

Existing

- 1-way stop for Benbow St.
- School driveway exit is just north of the intersection
- No marked crosswalks and no ramps on the west side of Baldwin Park Blvd.

Proposed

- Prohibit left turns out of the school driveway
- Add a yellow zebra-stripe crosswalk on the west leg (1)
- Add a yellow zebra-stripe crosswalk on the north leg (1)
- Add advanced yield lines for the proposed crosswalk on the north leg (2)
- Add R1-5 signs to the north leg crosswalk (2)
- Add Assembly D signs to the north leg crosswalk (2)
- Add rectangular rapid flash beacons for the proposed crosswalk on the north leg (1)
- Add a curb extension at the west end of the proposed crosswalk on the north leg (1)
- Add a long curb extension on the east side, serving the proposed crosswalk and extended to the south to include all of the area with existing red curb to physically restrict drivers' ability to stop in the no parking area (approximately 65')
- Add a raised median on Baldwin Park Blvd. north of the intersection, to serve as a crossing island and to physically prevent left turns out of the school driveway (approximately 70')



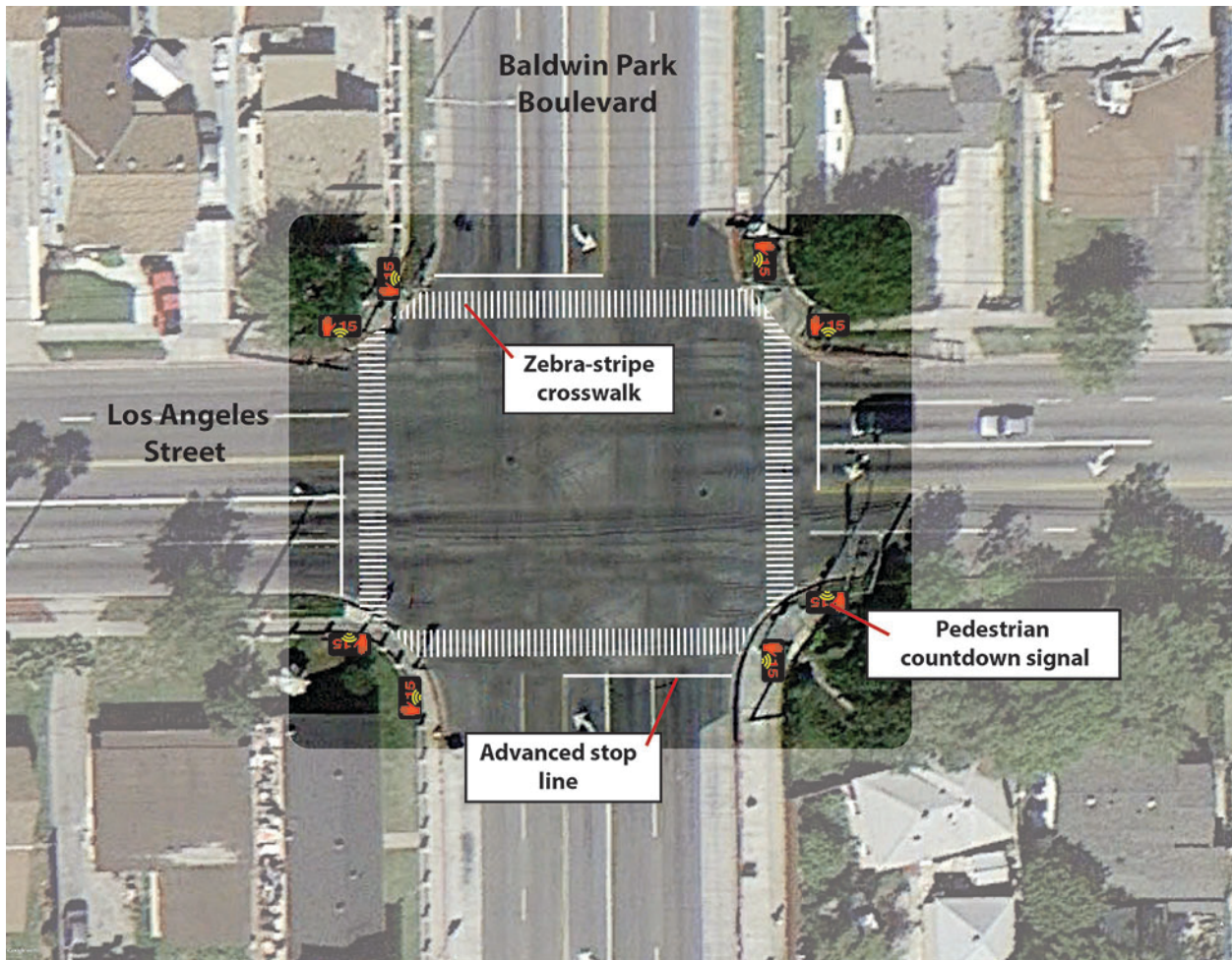
C3. Baldwin Park Blvd. & Los Angeles St.

Existing

- 4-way signalized intersection
- No countdown pedestrian signals
- White transverse-line crosswalks on all 4 legs

Proposed

- Install countdown pedestrian signals (8)
- Install advanced stop lines on all approaches to the intersection (4)
- Install zebra-stripe crosswalks on all legs (4)



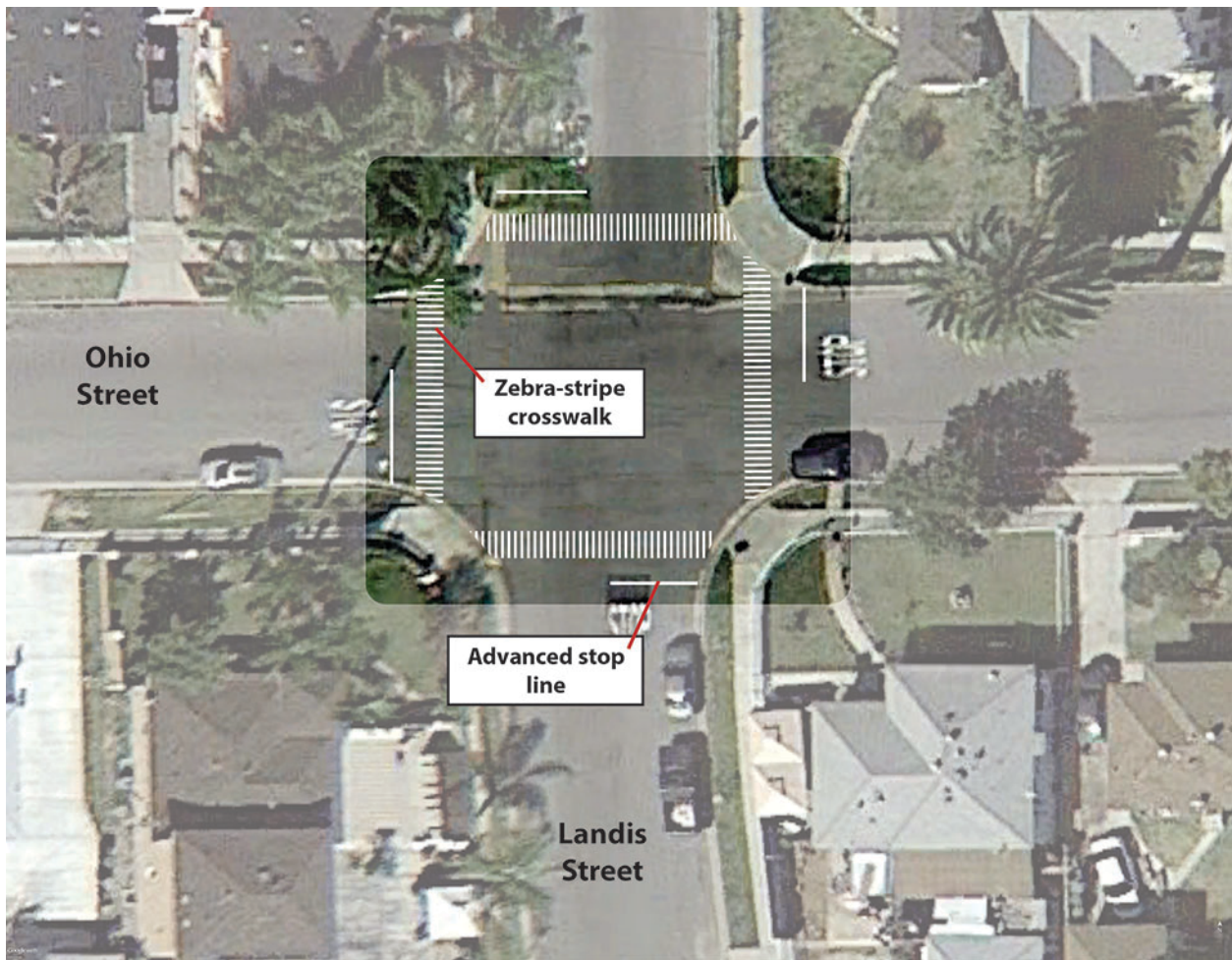
C4. Ohio St. & Landis Ave.

Existing

- 4-way stop
- Yellow transverse-line crosswalks on all 4 legs

Proposed

- Add stop lines on all legs (4)
- Install zebra-stripe crosswalks on all legs (4)



C5. Los Angeles St. & La Rica Ave.Existing

- 2 lanes in each direction (no turn lane or median) on Los Angeles St.
- 2-way stop for La Rica Ave.
- Yellow ladder crosswalk on the west leg to cross Los Angeles St.
- No marked crosswalks across La Rica Ave.
- Single ramp on the SW corner is misaligned with the crosswalk
- No ramp for the west leg crosswalk on the NW corner

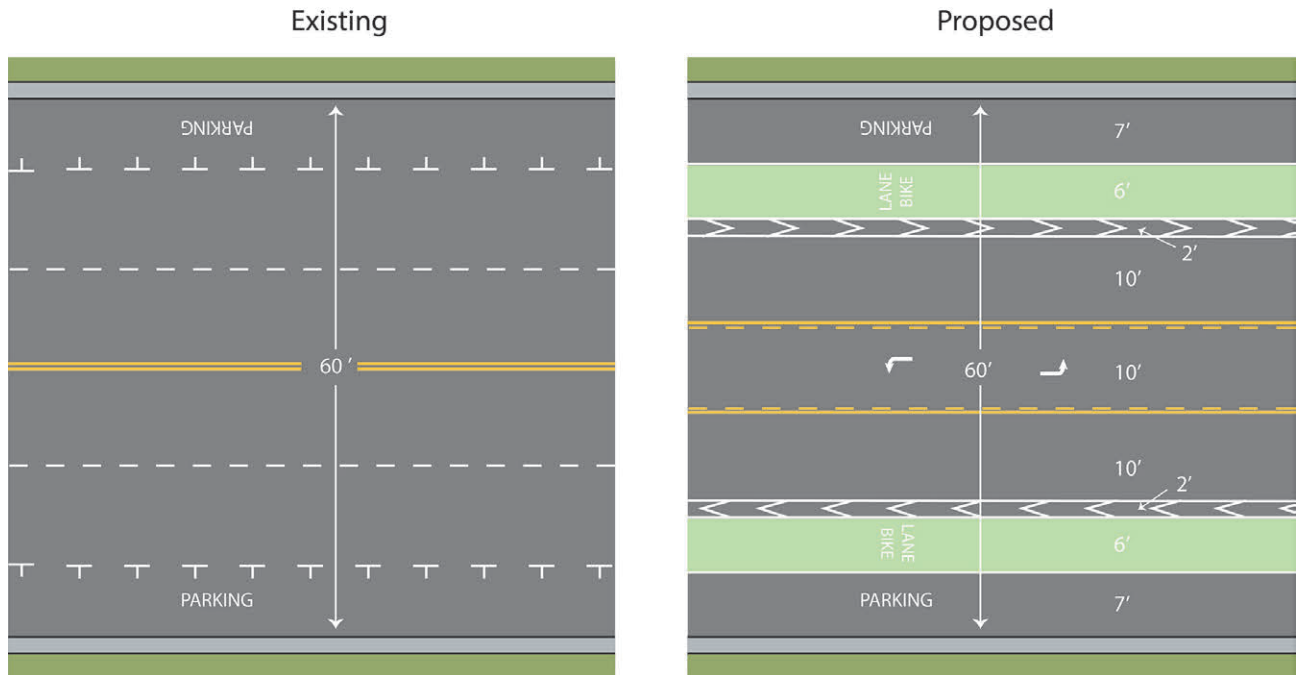
Proposed

- Add a traffic signal (1)
- Add curb extensions to both crossing faces of the east and west leg crosswalks (4)
- Add a sidewalk extension across La Rica Ave. on the north leg (1)
- Add white zebra-stripe crosswalks across all legs (4)
- Add an advanced stop lines to all legs (4)
- Evaluate the potential for implementing a 4-lane to 3-lane road diet on Los Angeles St., and provide a crossing island on the west leg prohibiting eastbound left turns (1 pair)
- Add crossing islands for the west leg crosswalk by removing parking on one or both sides of the Los Angeles Ave. approaches to the crosswalk and tapering the lanes (1 pair)



Linear Improvements

- Add a sidewalk along the west side of Baldwin Park Blvd. south of Benbow St. (approximately 155').
 - option 1 is to obtain property from property owner where the house is currently being reconstructed much further back from the street than the old house (this could be made a condition of the reconstruction of the house on this property)
 - option 2 is to build the sidewalk in the parking lane by extending the curb out (at this location water flows away from the SW corner of the intersection to the west and the south, so this curb can be reconstructed without the installation of any inlets or pipes)
- Add a sidewalk along the west side of Baldwin Park Blvd. north of Los Angeles St. (approximately 180')
- Evaluate a 4-lane to 3-lane road diet on Los Angeles St. between Stewart Ave. and Maine Ave. This is consistent with the City’s “Plan to Improve Corridors and Neighborhood Connections” from October 2010.



Bicycle, Skateboard, and Scooter Parking

- Add racks for 10 bicycles as described in the Design Guidance section. Add racks for 10 skateboards or scooters. Add more if needed.

Program Plan

Over time the schools will form SRTS Committees. These committees will oversee and coordinate ongoing education, encouragement, and enforcement programs at the schools. They will decide which programs to institute. In the meantime, workshop participants at Santa Fe Elementary School viewed modules on these topics and generated the following list of ideas they thought they would like to participate in.

Education

- Parent education
- Child education

Encouragement

- Walk and roll to school
- Walk-to-school contest
- Walk-to-school day
- Enhanced bicycle racks and skateboard racks