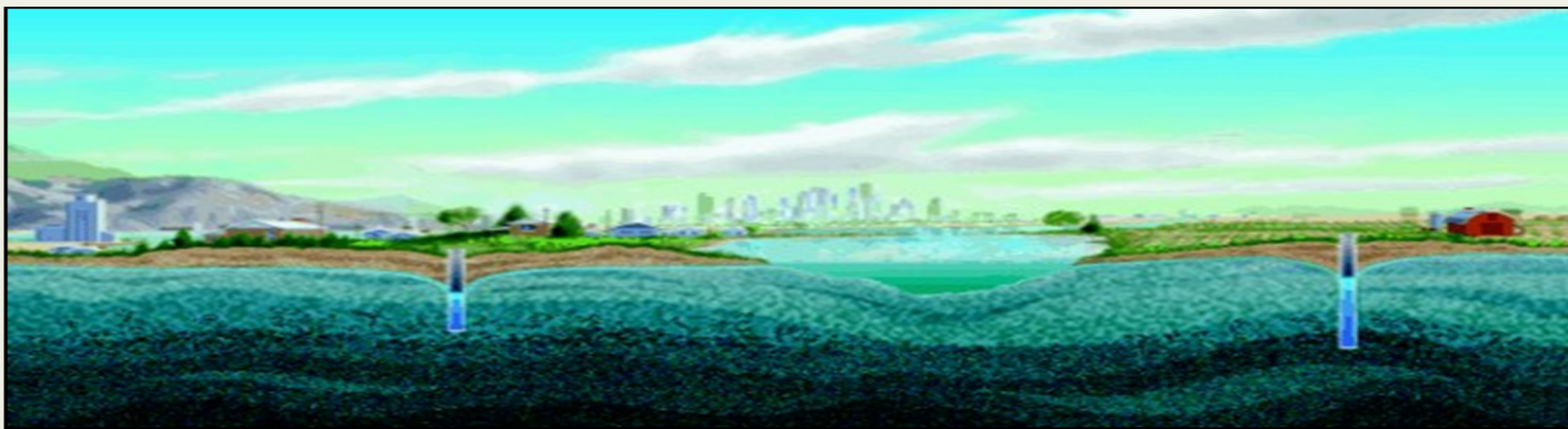




Overview of the Sustainable Groundwater Management Act

*California Department of Water Resources
Sustainable Groundwater Management Program*

March 2016





Presentation Overview

- **Statewide Hydrology and Groundwater Conditions**
- **Groundwater Legislation**
 - Sustainable Groundwater Management Act (SGMA)
- **DWR's Sustainable Groundwater Management Program**
 - Groundwater Sustainability Agency (GSA) Formation
 - Groundwater Sustainability Plan (GSP) Regulations

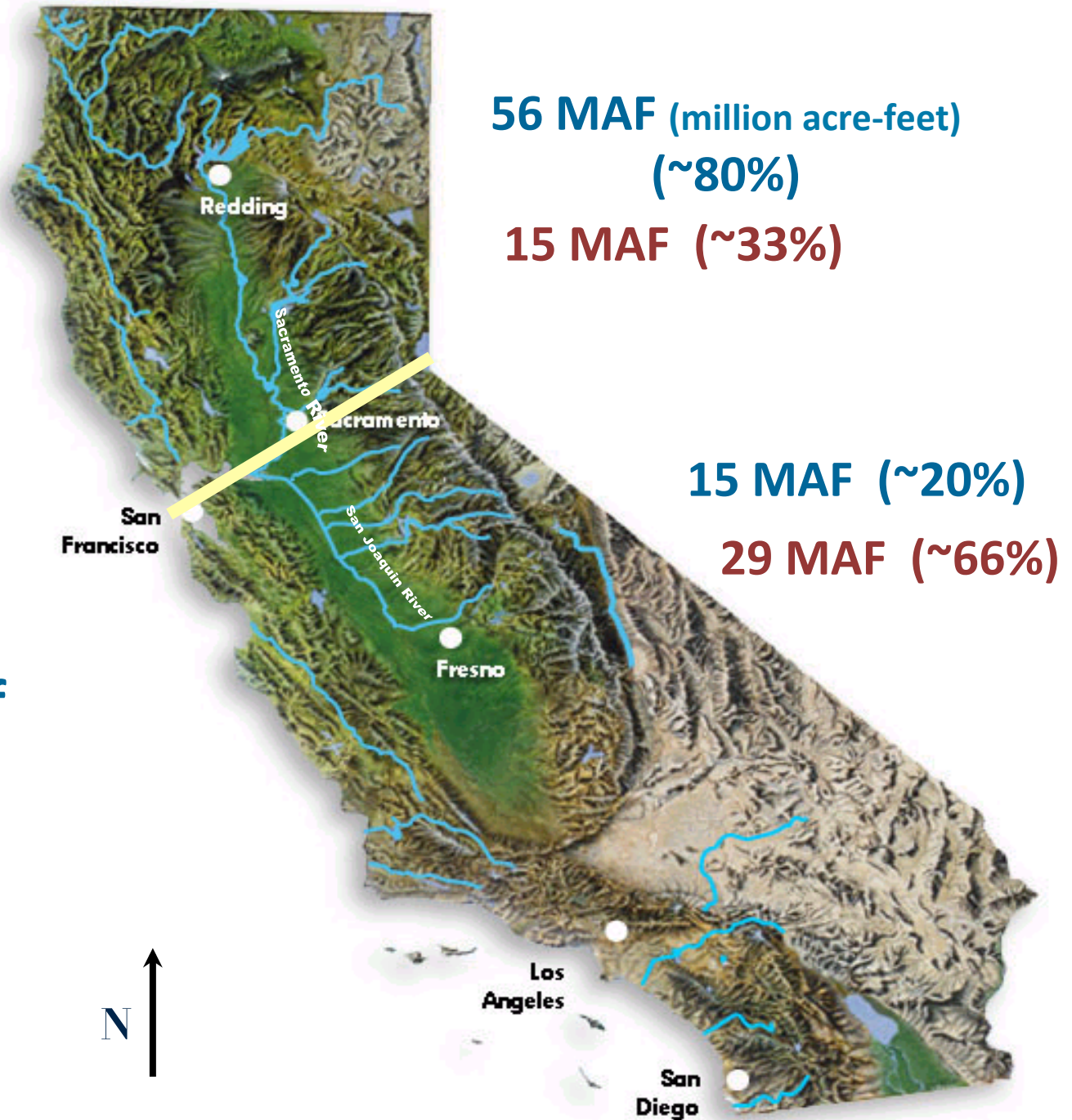


Statewide Hydrology and Groundwater Conditions

California Hydrology and Water Use

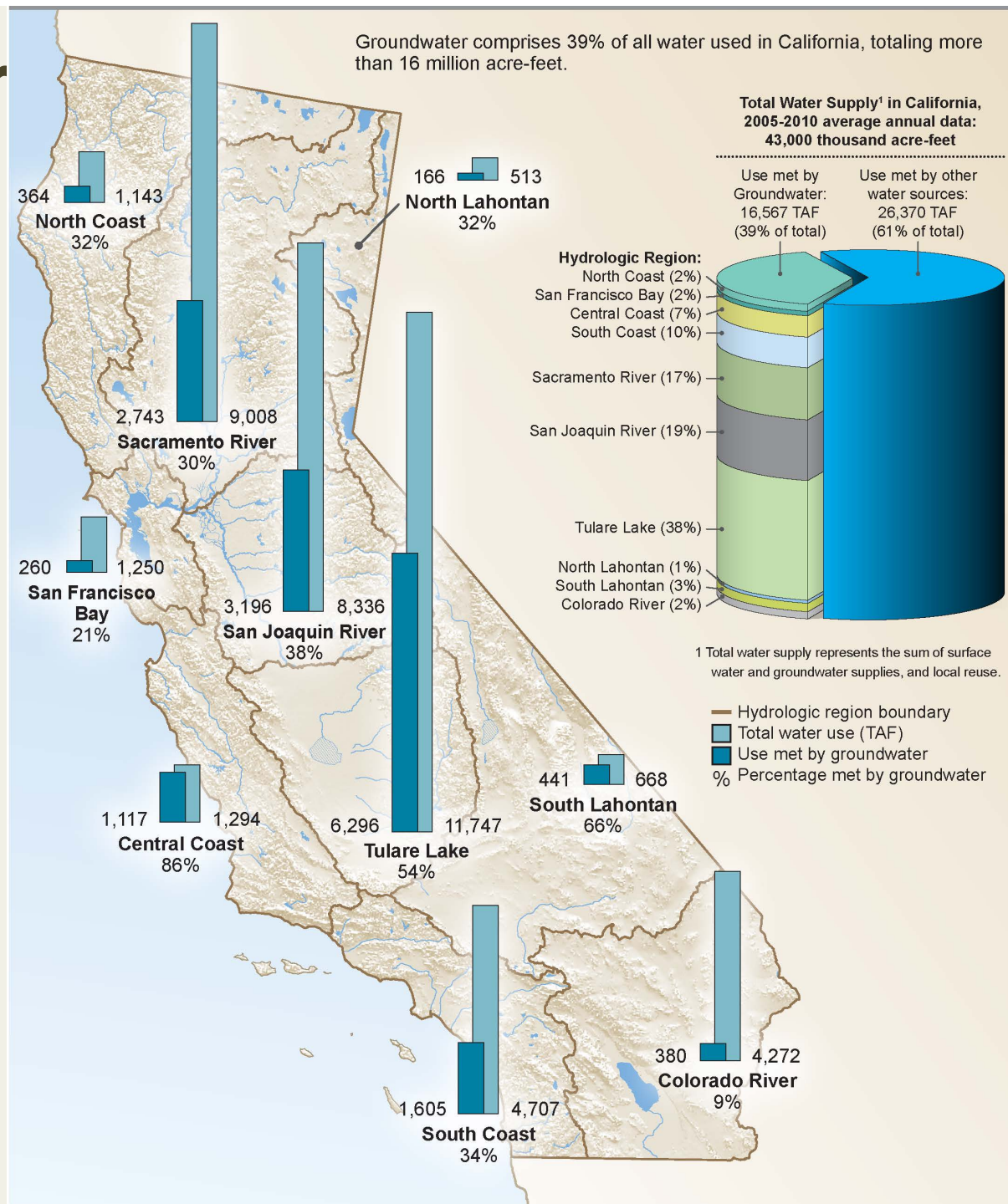
**Distribution of
Average Runoff
(major river
systems)**

**Distribution of
Water Use**

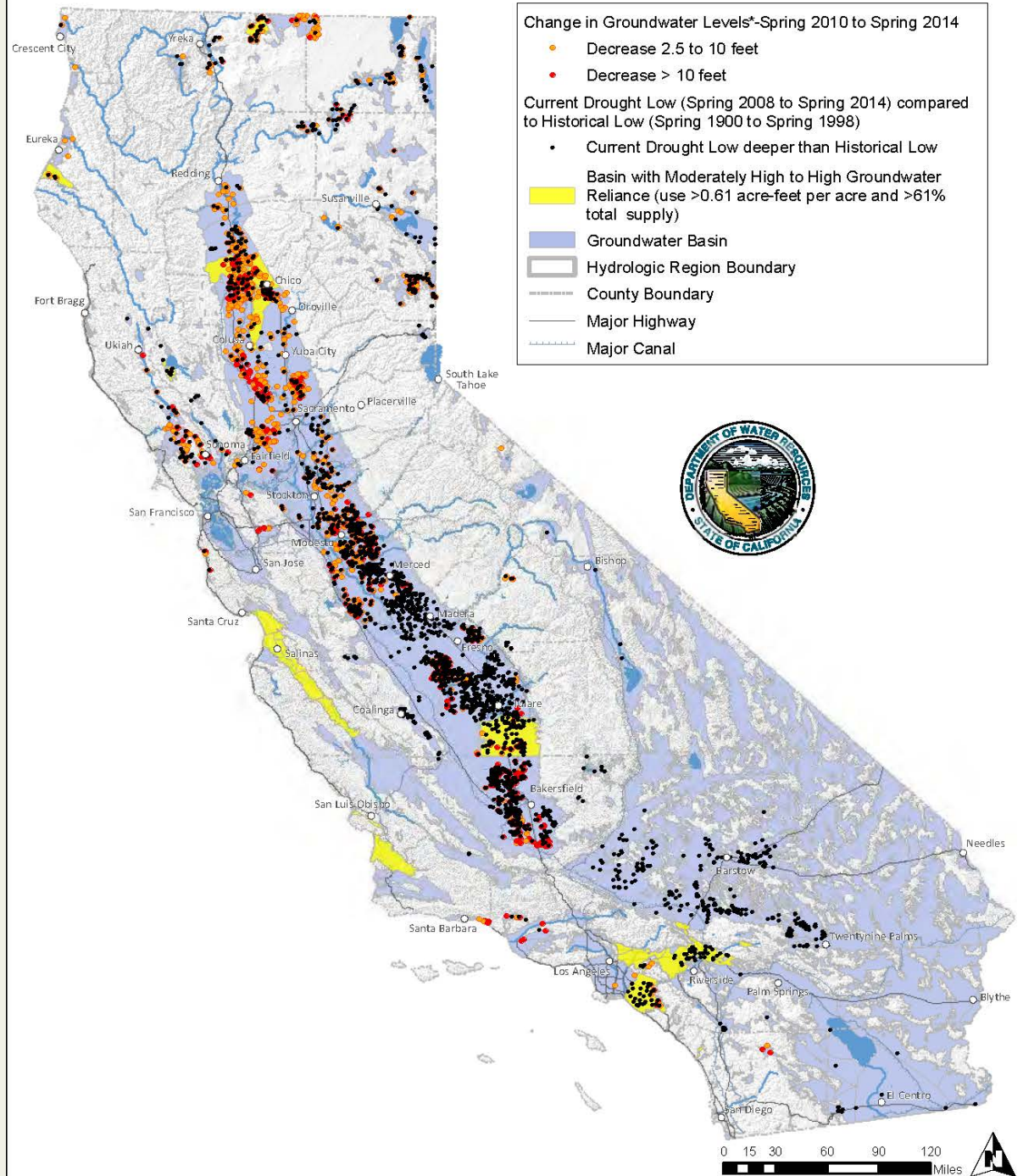


Groundwater Use

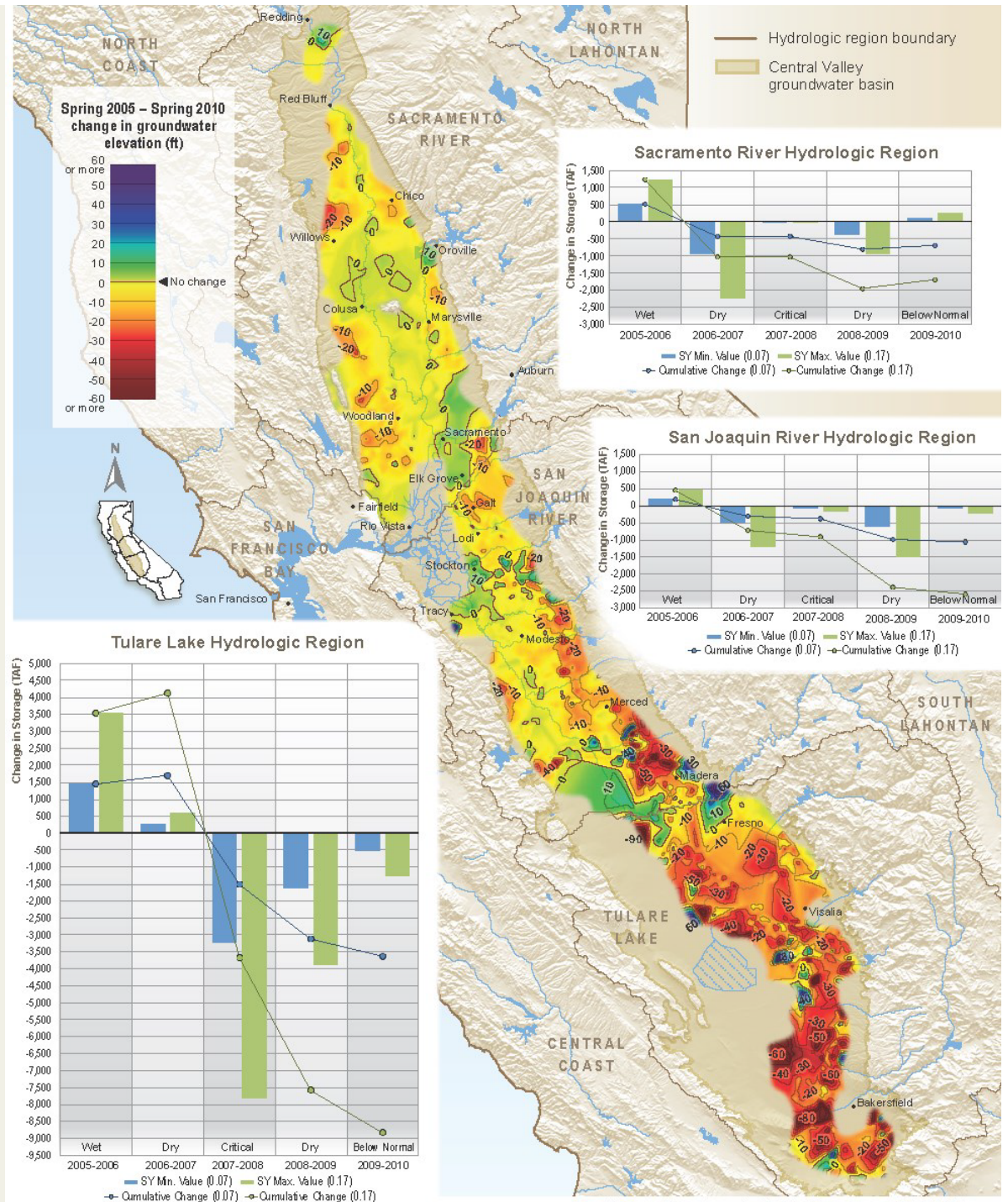
- Groundwater accounts for almost 40% of CA water supply; more than 16 million acre-feet
- Groundwater use expected to be ~60% in drought



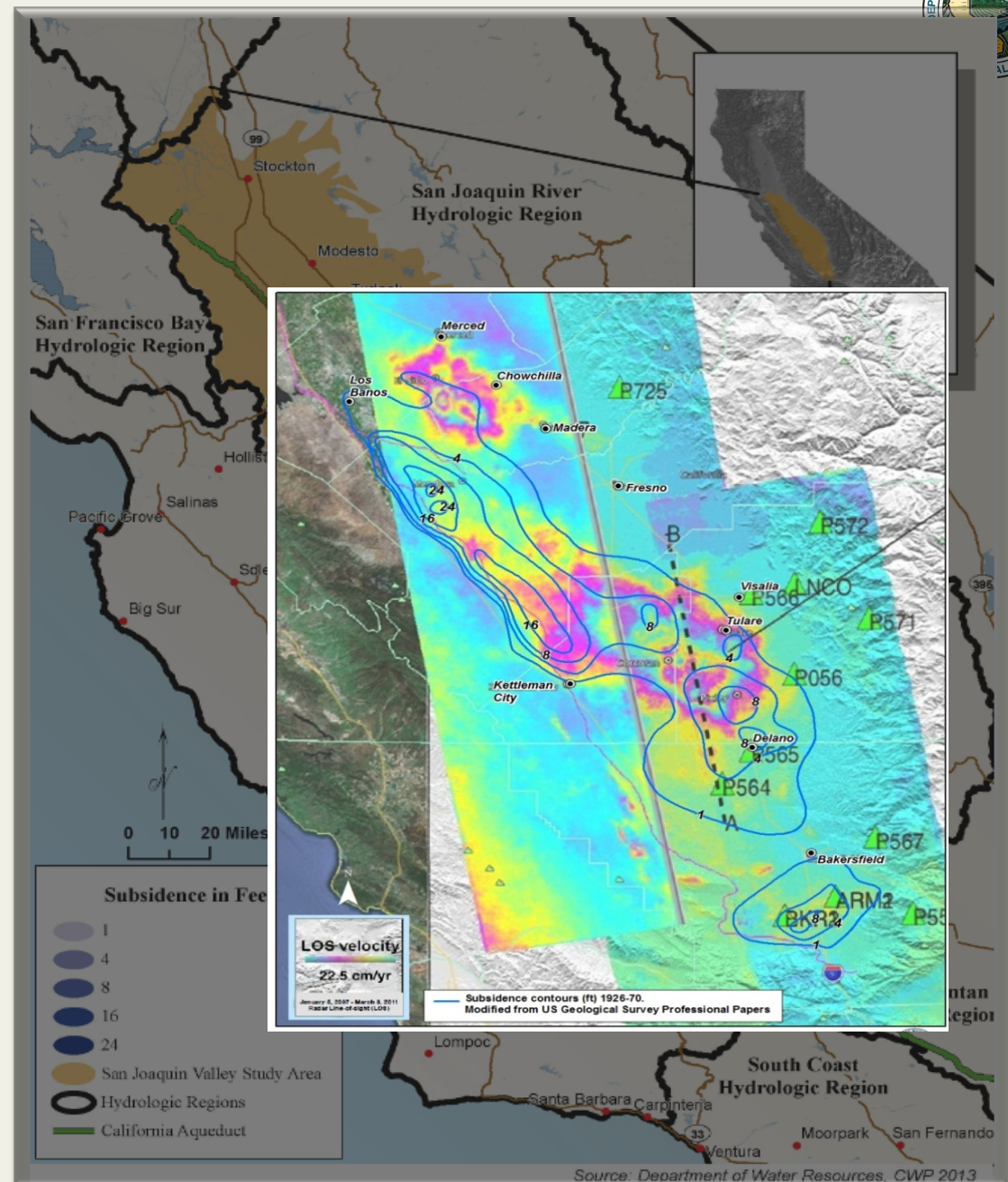
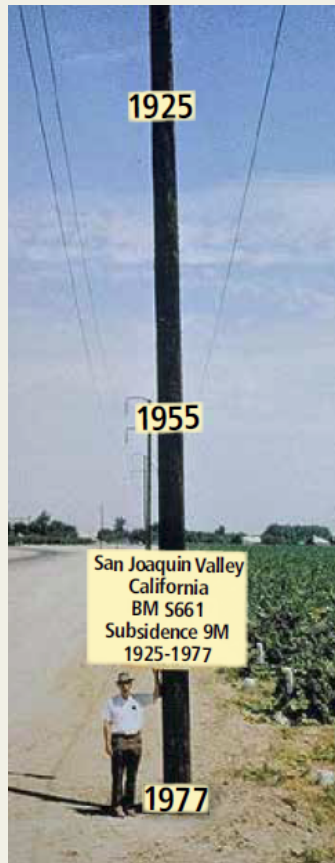
**Black Dots =
Groundwater
Level
at Lowest
Recorded Value**



Change in Groundwater Storage (2005-2010)



Land Subsidence In San Joaquin Valley





Groundwater Legislation (Sustainable Groundwater Management Act)

California's Sustainable Groundwater Management Act (SGMA)



“A central feature of these bills is the recognition that groundwater management in California is best accomplished locally.”

Governor Jerry Brown, September 2014

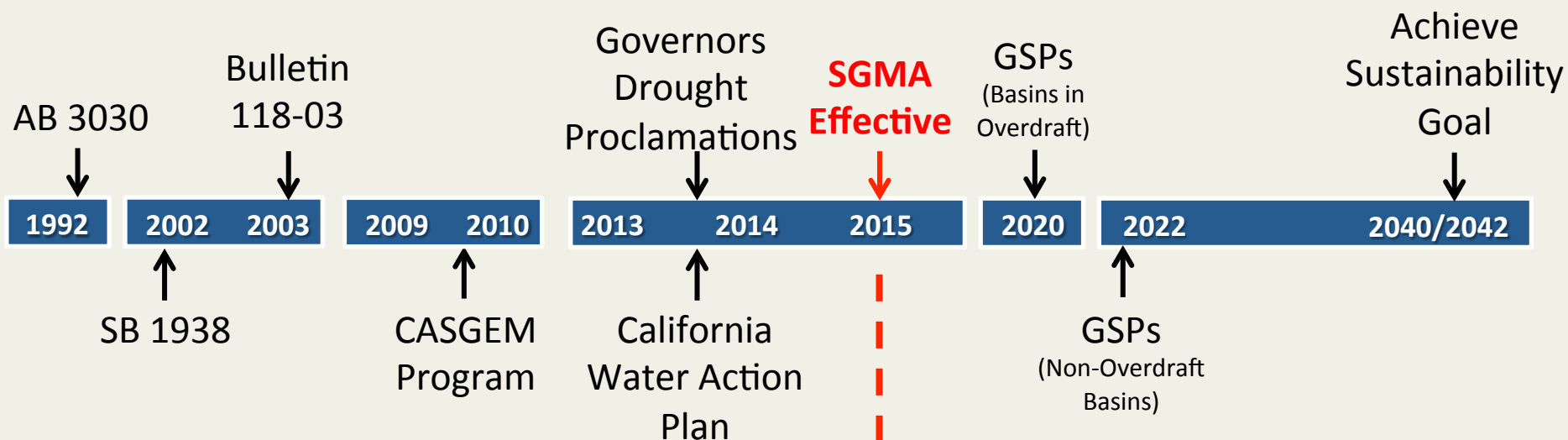
SGMA is a three bill legislative package:

- SB 1168 (Pavley)
- AB 1739 (Dickinson)
- SB 1319 (Pavley)





California's Major Groundwater Milestones



Voluntary Groundwater Management

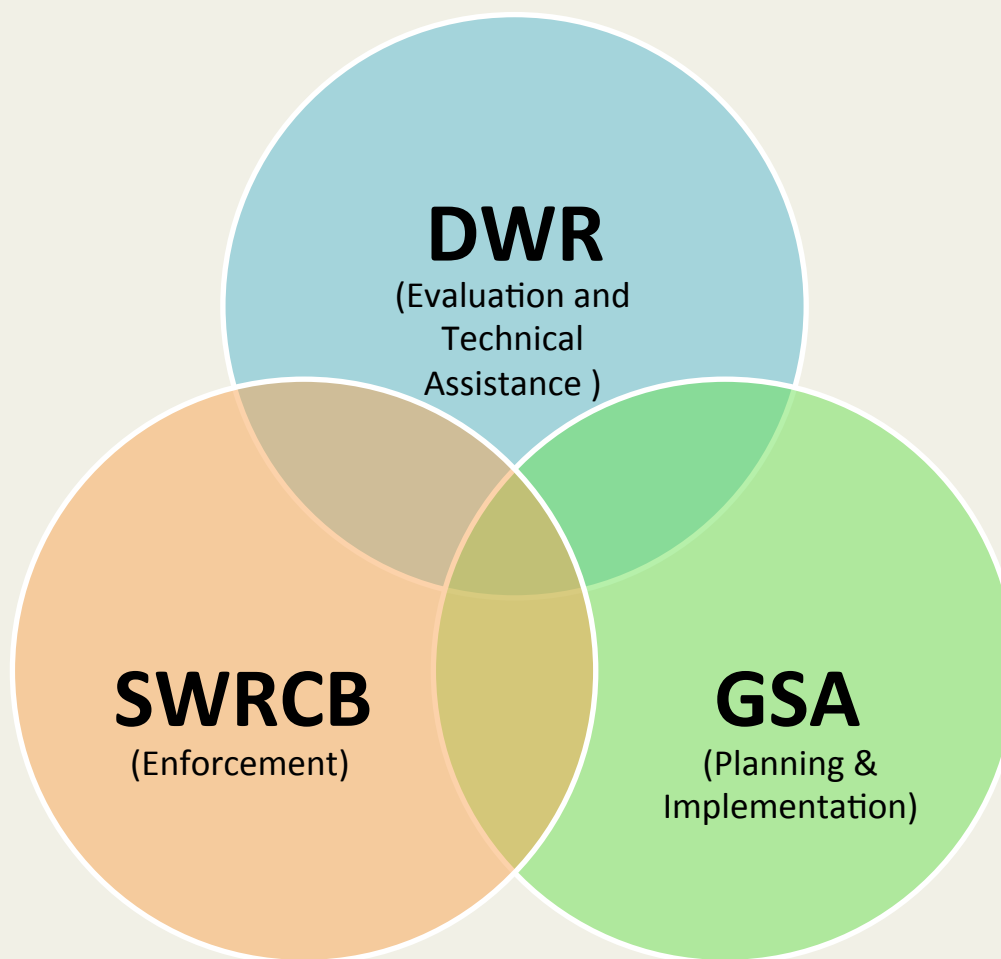
- Service area planning
- Minimal implementation
- Variable authority
- Grant incentives

Required Groundwater Management

- Entire basin planning
- Required implementation
- GSAs have new:
 - Authorities
 - Responsibilities
- SWRCB backstop



SGMA Roles and Responsibilities





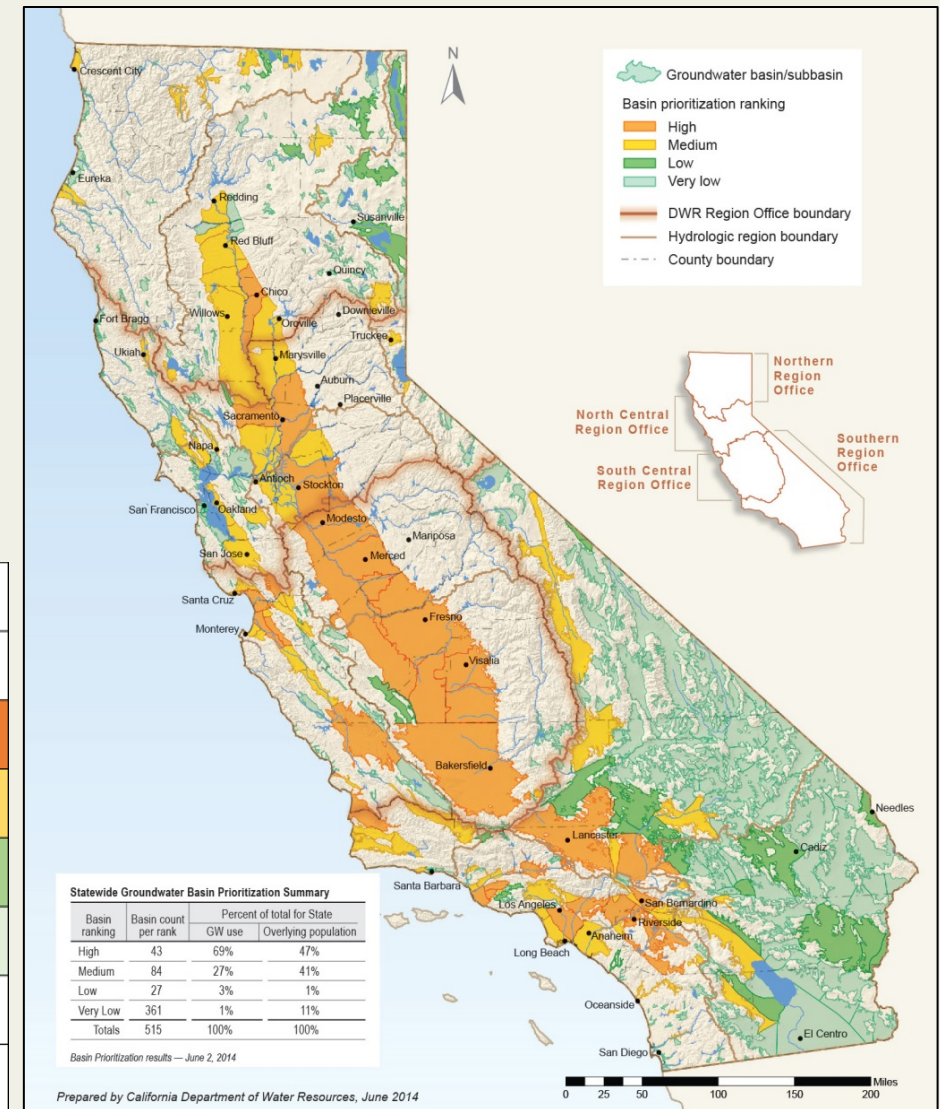
Legislative Intent of SGMA

Water Code Section 10720.1

- a) To provide for the sustainable management of groundwater basins.
- b) To enhance local management.
- c) To establish minimum management standards.
- d) To provide local groundwater agencies with authority and the necessary technical and financial assistance.
- e) To avoid or minimize subsidence.
- f) To improve data collection.
- g) To increase groundwater storage.
- h) To manage groundwater basins through the actions of local governmental agencies while minimizing state intervention.

Where Does SGMA Apply?

- All 127 high- and medium-priority basins are subject to SGMA.
- A “basin” is an alluvial aquifer, not a fractured bedrock aquifer.
- 127 priority basins account for:
 - 96% of average annual GW supply
 - 88% of 2010 population overlying GW basin area

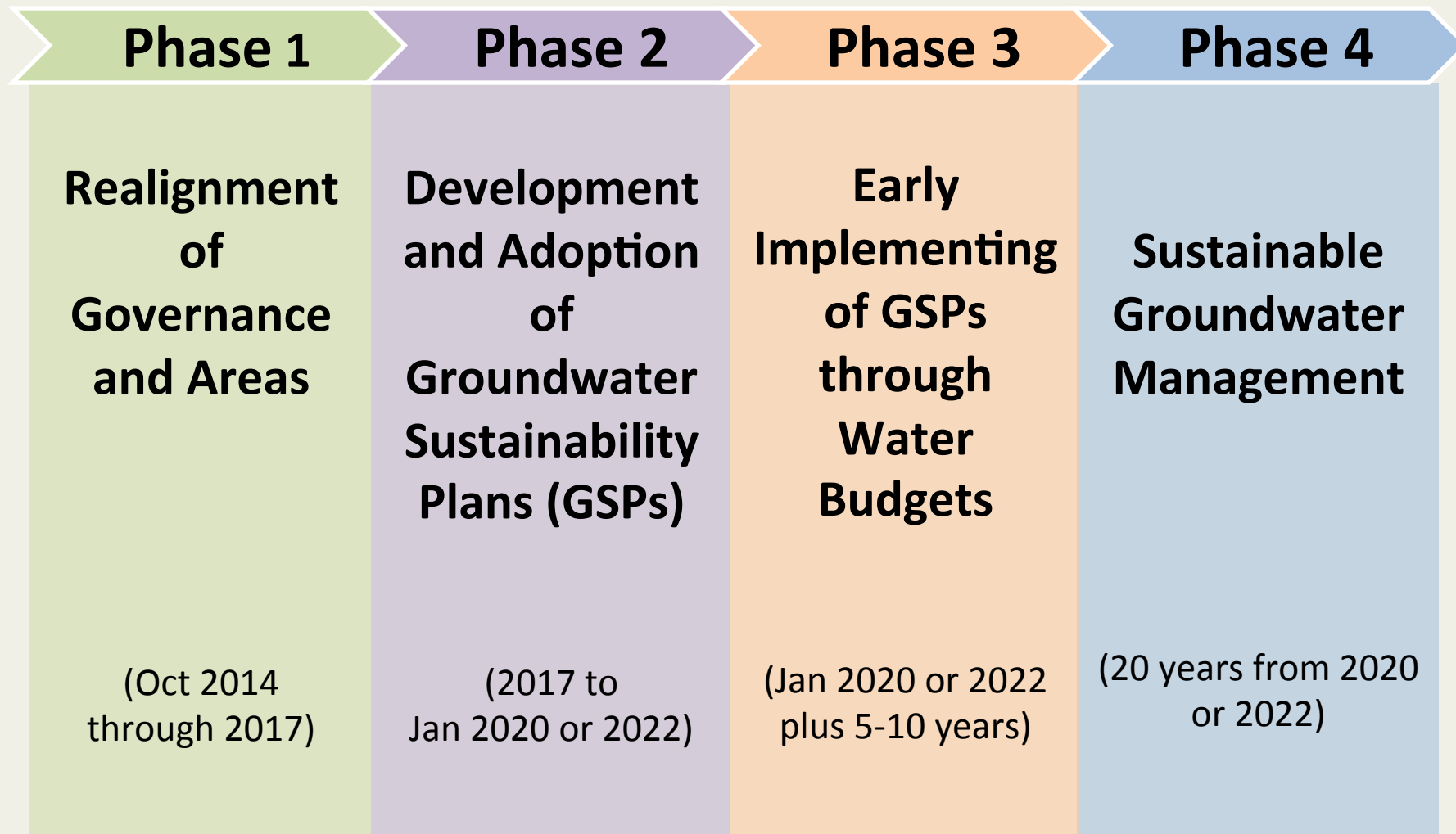


BASIN RANKING	BASIN COUNT	PERCENT OF TOTAL	
		GW USE	POPULATION
High	43	69%	47%
Medium	84	27%	41%
Low	27	3%	1%
Very Low	361	1%	11%
Totals	515	100%	100%

Basin Prioritization Results – June 2, 2014



Phases to Implement SGMA and Achieve Sustainable Groundwater Management



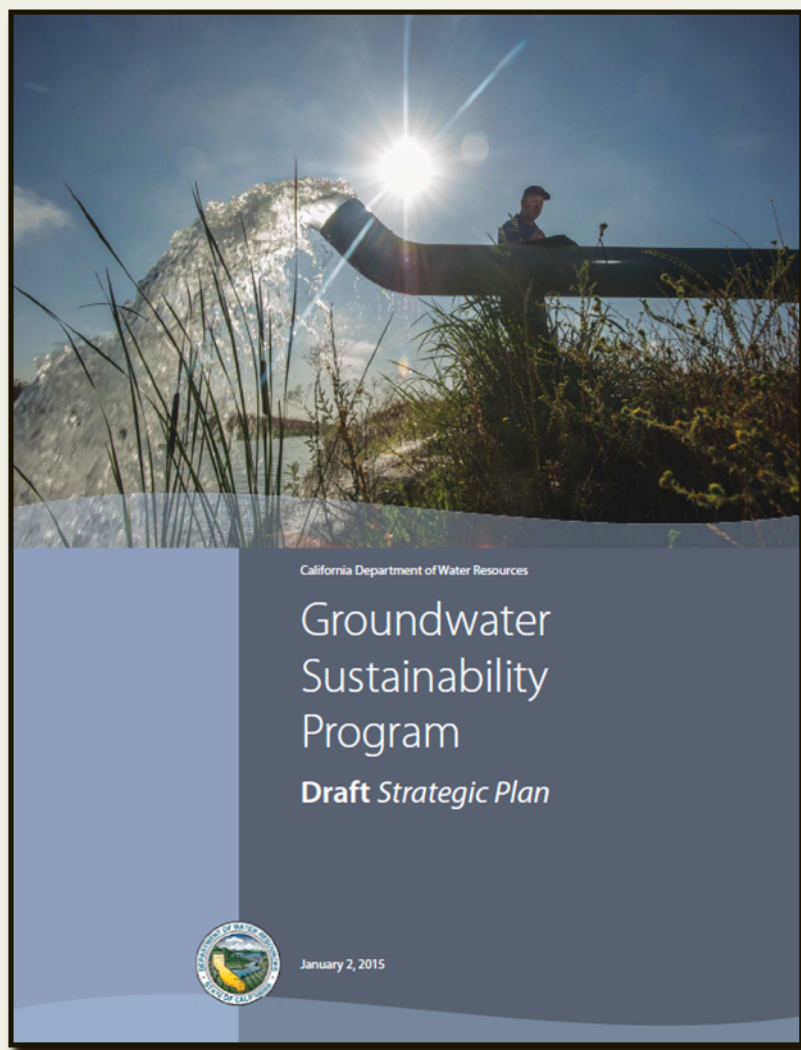


DWR's Sustainable Groundwater Management Program



DWR's Implementation of SGMA

<http://water.ca.gov/groundwater/sgm/index.cfm>

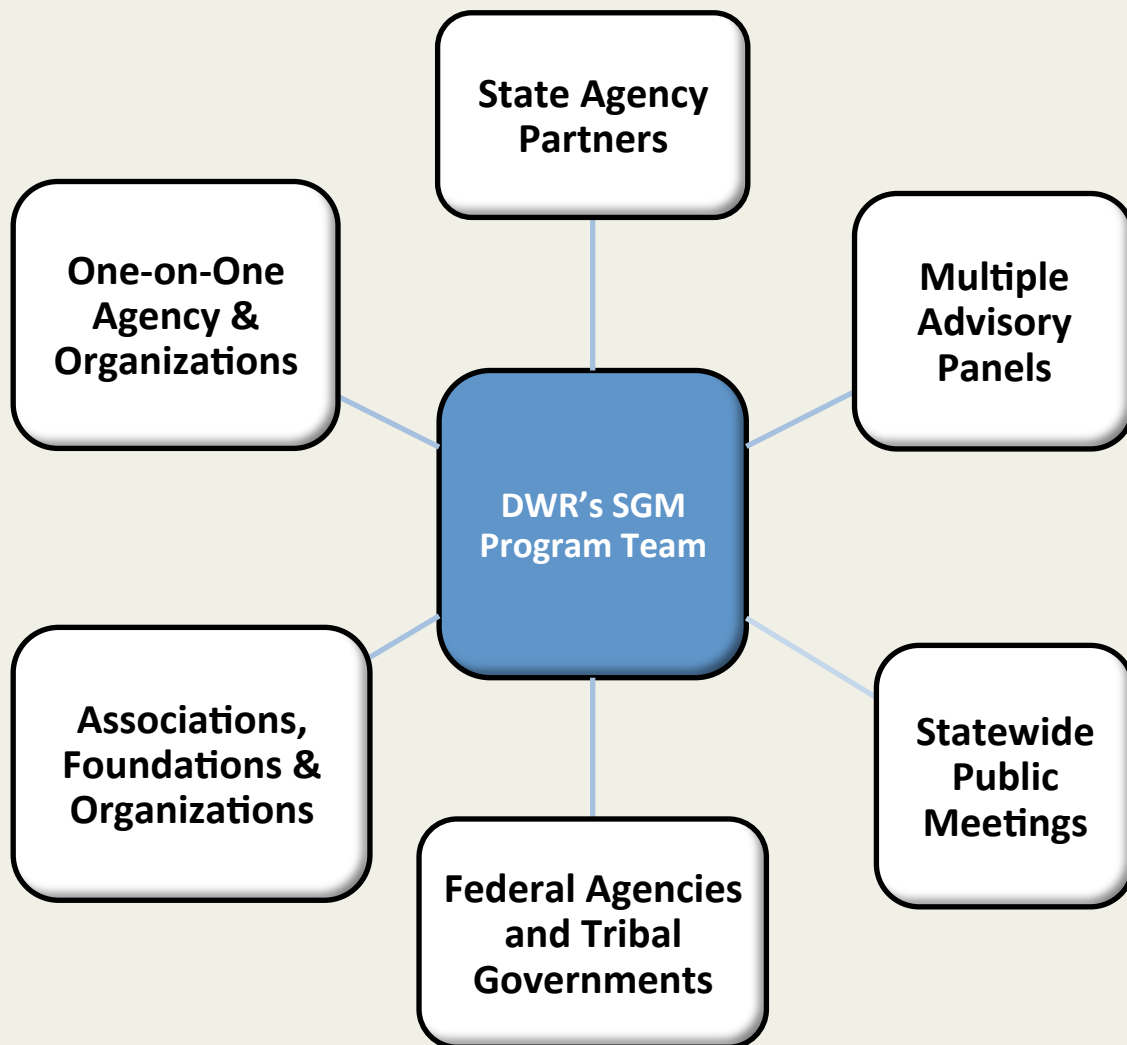


SUSTAINABLE GROUNDWATER MANAGEMENT (SGM) PROGRAM

- Describes DWR's roles and responsibilities
- Outlines actions from the *California Water Action Plan*
- Presents DWR's groundwater sustainability goals, objectives, and actions
- *Final Strategic Plan* available soon.



SGM Communication and Outreach



SGMA ADVISORY GROUPS

- Practitioners Advisory Panel
- Tribal Advisory Group
- Non-Governmental Organizations
- Association of California Water Agencies (ACWA)
- Northern California Water Association (NCWA)
- San Joaquin Tributaries Authority
- San Luis & Delta Mendota Water Authority
- Central Coast Area
- RCRC & CSAC
- Agricultural Community
- Tulare Lake Hydrologic Group
- Numerous other meetings with Local Agencies



DWR's SGMA Responsibilities and Timelines

- **Initial Basin Prioritization: §10722.4**
 - Completed by January 31, 2015
- **Regulations for Modifying Groundwater Basin Boundaries: §10722.2**
 - Completed by January 1, 2016
- **Identification of Critically Overdrafted Basins: §12924**
 - Completed January 2016
- **Groundwater Sustainability Agency (GSA) Formation**
 - Due June 30, 2017
- **Groundwater Sustainability Plan (GSP) and Alternatives Regulations: §10733.2**
 - Regulations Due June 1, 2016, GSPs due 2020 or 2022
- **Water Available for Replenishment: §10729(c)**
 - Due January 1, 2017
- **Best Management Practices: §10729(d)**
 - Due January 1, 2017
- **Bulletin 118: §12924**
 - Interim Update due January 2017; Comprehensive Update due 2020

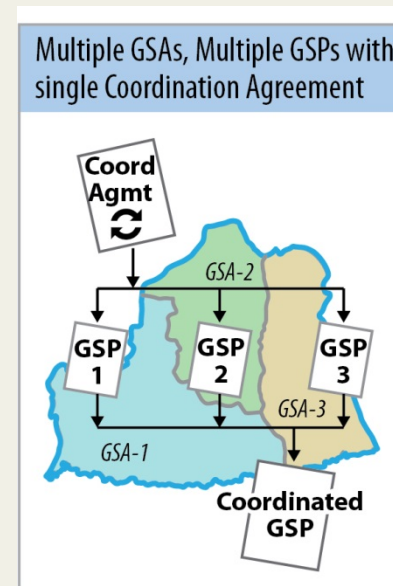
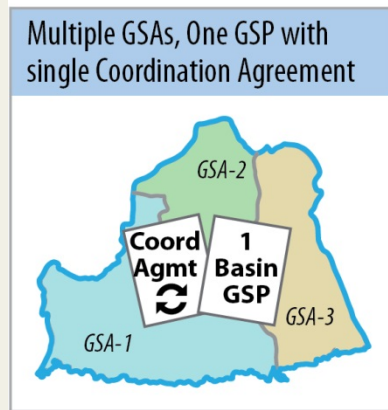


DWR's SGMA Responsibilities and Timelines

- **Initial Basin Prioritization: §10722.4**
 - Completed by January 31, 2015
- **Regulations for Modifying Groundwater Basin Boundaries: §10722.2**
 - Completed by January 1, 2016
- **Identification of Critically Overdrafted Basins: §12924**
 - Completed January 2016
- **Groundwater Sustainability Agency (GSA) Formation**
 - Due June 30, 2017
- **Groundwater Sustainability Plan (GSP) and Alternatives Regulations: §10733.2**
 - Regulations Due June 1, 2016, GSPs due 2020 or 2022
- **Water Available for Replenishment: §10729(c)**
 - Due January 1, 2017
- **Best Management Practices: §10729(d)**
 - Due January 1, 2017
- **Bulletin 118: §12924**
 - Interim Update due January 2017; Comprehensive Update due 2020

What is a GSA and a GSP?

- “*Groundwater sustainability agency*” means one or more local agencies that implement the provisions of this part [Part 2.74 or SGMA].
- “*Local agency*” means a local public agency that has water supply, water management, or land use responsibilities within a groundwater basin.
- GSAs are responsible for preparing groundwater sustainability plans (GSPs) or an Alternative Plan.
- §10727(b) – A GSP may be any of the following:

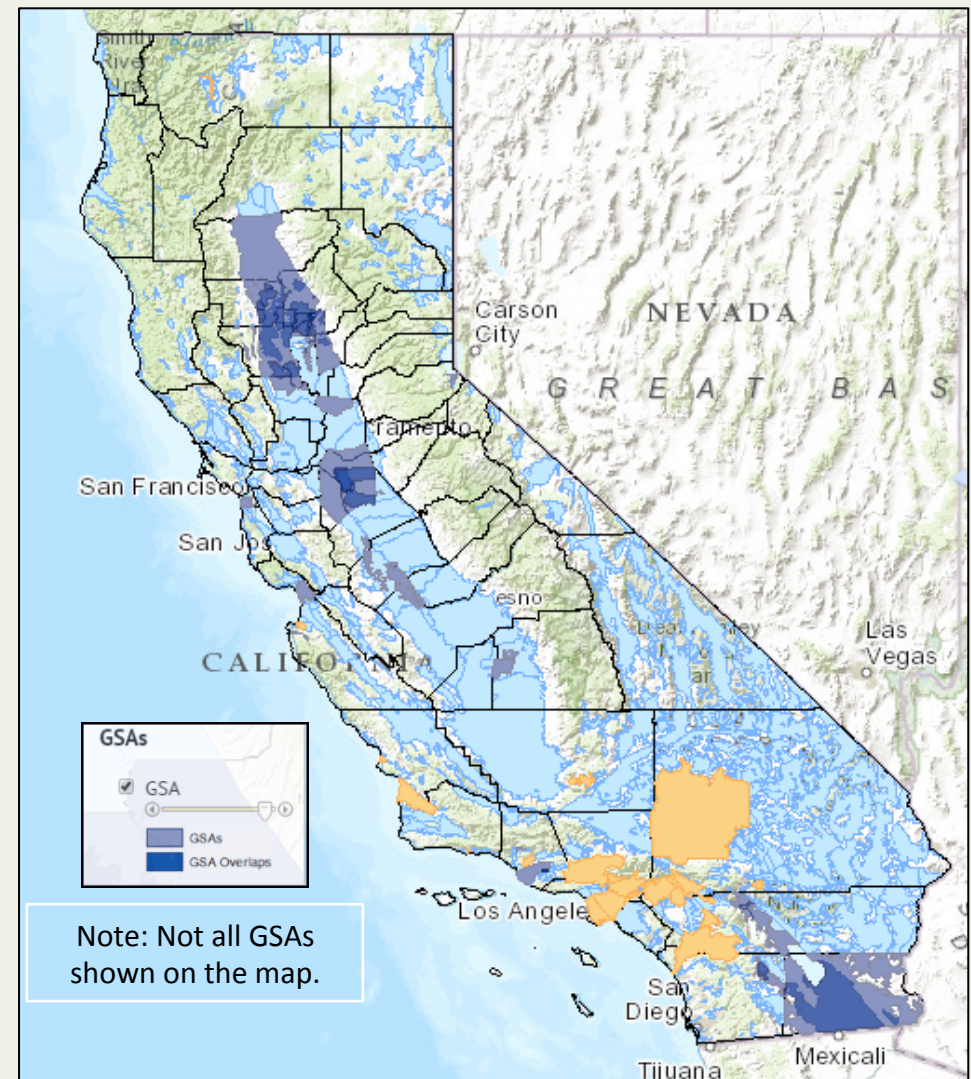




GSA Formation

<http://water.ca.gov/groundwater/sgm/gsa.cfm>

- GSAs must form by June 30, 2017
- **64 GSAs** have been formed as of March 1, 2016
- Many need to resolve overlapping service area boundaries
- SB 13 requires DWR to review GSA notices for completeness
- DWR is identifying exclusive GSAs on its GSA Formation Table
- GSAs have a requirement to address stakeholder interests





GSP Regulation Requirements

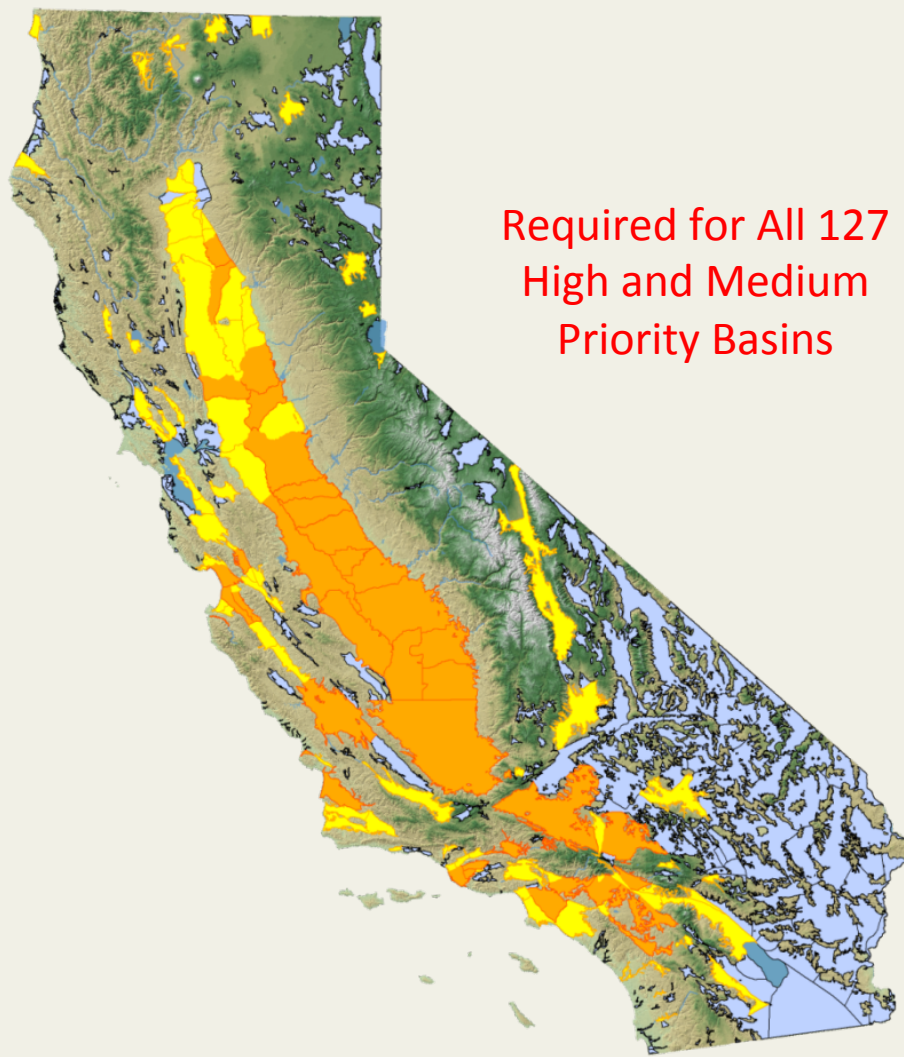
<http://water.ca.gov/groundwater/sgm/gsp.cfm>

By June 1, 2016, DWR shall adopt regulations for:

- Evaluation of GSPs & Alternatives
- Implementation of GSPs & Alternatives
- Coordination agreements

The regulations shall identify:

- Required Plan Components (§10727.2)
- Additional Plan Elements (§10727.4)
- Coordination of multiple GSPs in basin (§10727.6)
- Other information that will assist local agencies in developing and implementing GSPs and coordination agreements





GSP and Alternative Regulations

Regulation Articles

1. Introductory Provisions
2. Definitions
3. Technical & Reporting Standards
4. Procedures
5. Plan Contents
 - Land Use and Other Plan Connections
6. Evaluation
7. Reports, Assessments, and Amendments
8. Coordination Agreements
9. Alternatives

CA.gov | Help | Access

CA.GOV CALIFORNIA DEPARTMENT OF WATER RESOURCES

HOME | NEWSROOM & EVENTS | ISSUES | ABOUT US

SGM Sustainable Groundwater Management

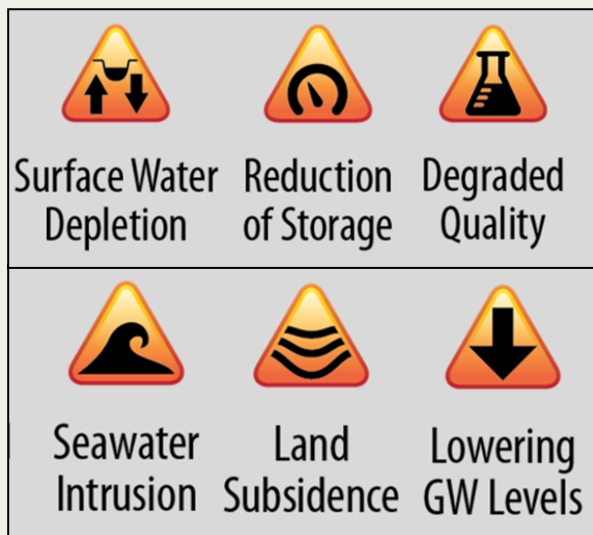
Groundwater Sustainability Plan Emergency Regulations

DRAFT Draft GSP Emergency Regulations (February 18, 2016)
DRAFT GSP Emergency Regulations Public Meetings and Public Comment Process (Updated March 10, 2016)
DRAFT Draft GSP Emergency Regulations Guide (March 2, 2016)

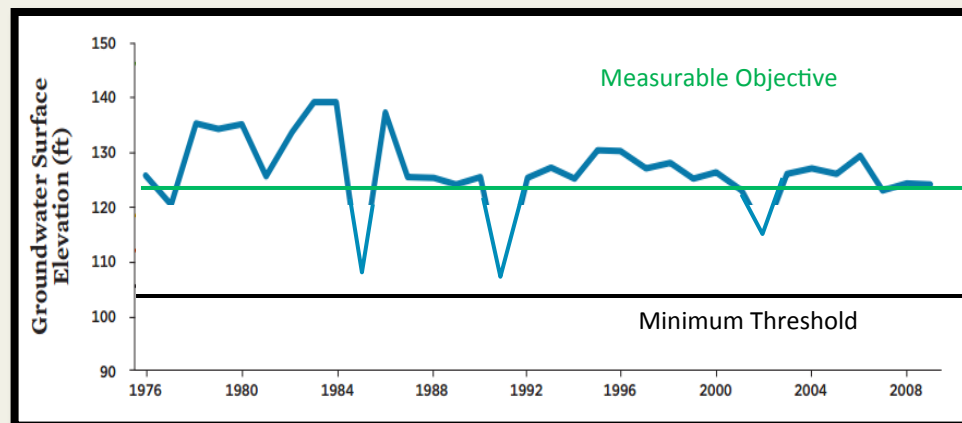
The legislative intent of the 2014 Sustainable Groundwater Management Act (SGMA) is for groundwater basins in California to be managed and regulated by local public agencies and groundwater sustainability agencies (GSAs). In the basins designated by the Department of Water Resources (DWR) as medium and high priority, local public agencies and GSAs are required to develop and implement groundwater sustainability plans (GSPs) or alternatives to GSPs (Alternatives). Pursuant to Water Code Section 10733.2, DWR is required to draft and adopt emergency

GSP Regulation Requirements - Overview

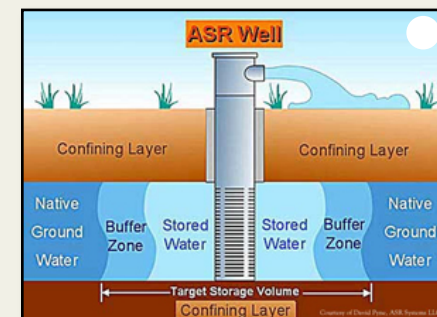
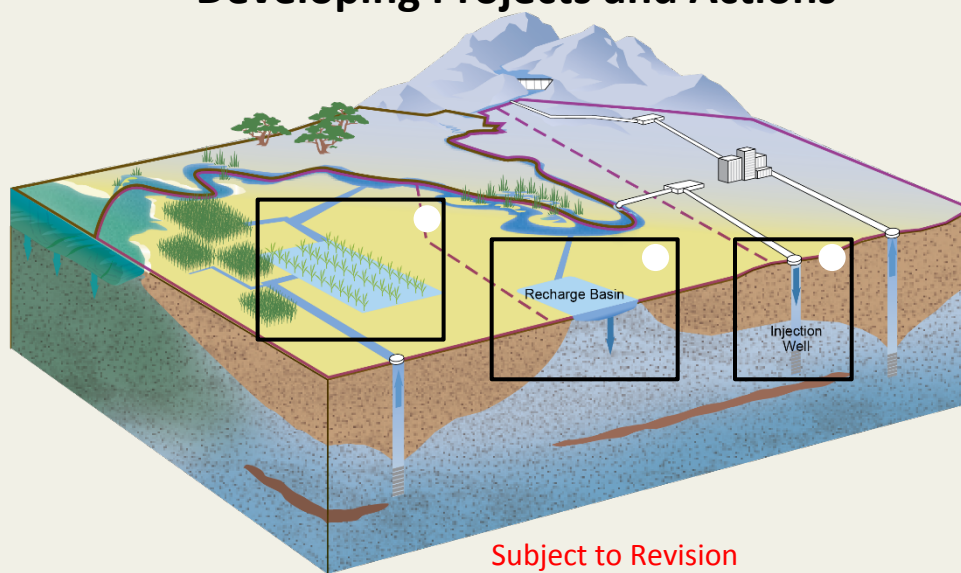
Avoiding Undesirable Results



Measuring & Monitoring Groundwater Conditions



Developing Projects and Actions



Subject to Revision



GSP and Alternative Regulations

Next Steps

- **March 21 - 25** – Public Meetings to Consider Public Comments
- **April 1** – Public Comment Period Closes
- **April 20** – Present Summarized Public Comments to CWC
- **May** - Present Proposed Emergency Regulations to CWC for adoption.
- **June** - Submit Adopted Emergency Regulations to Office of Administrative Law.



DWR SGMA Email List:

<http://water.ca.gov/groundwater/sgm/subscribe.cfm>

