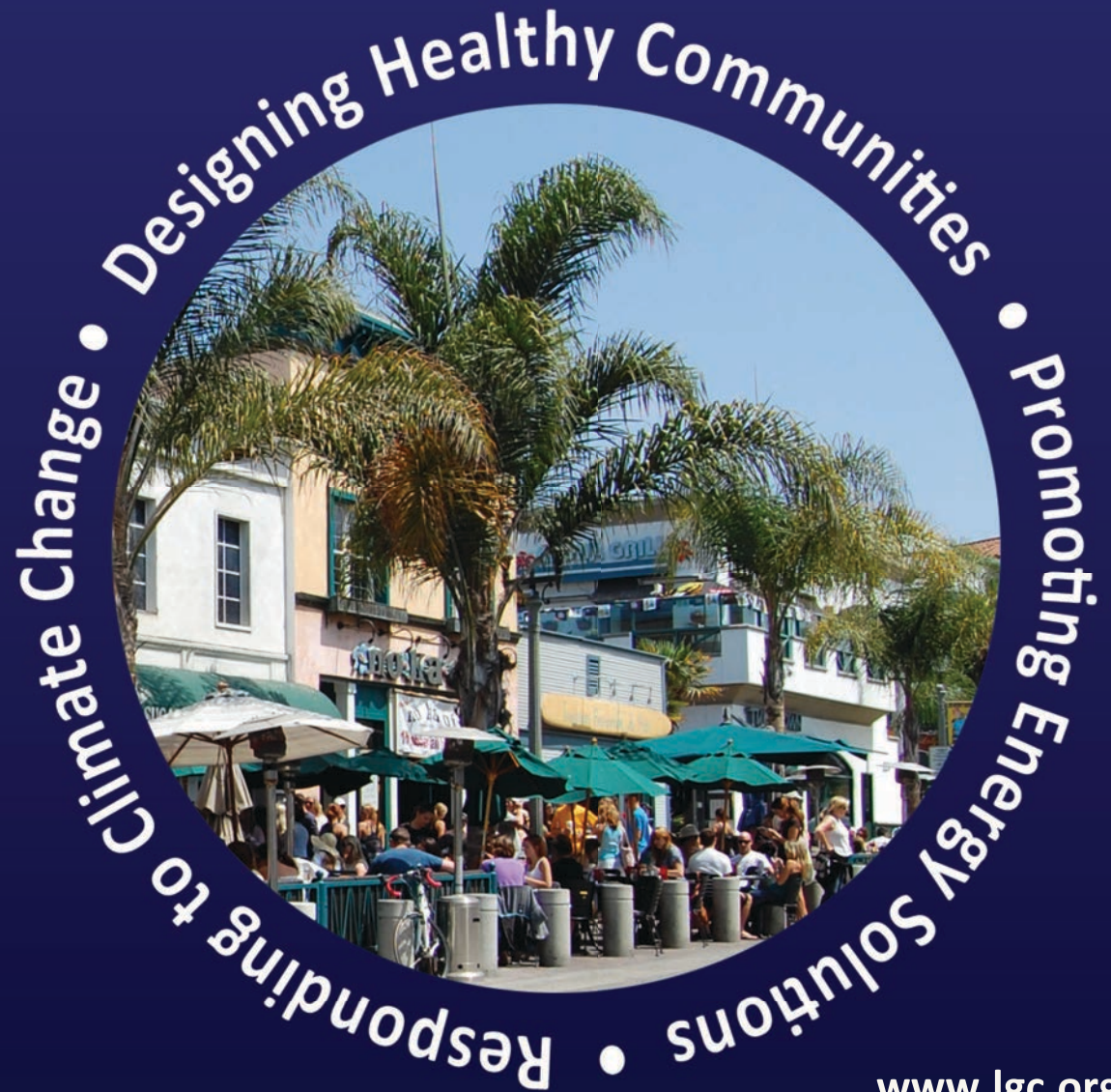


Local Government Commission

We are a nonprofit organization that fosters innovation in local environmental sustainability, economic prosperity and social equity.



What we do...

The **LGC** helps transform communities through *inspiration*, *practical assistance* and a *network* of visionary local elected and community leaders.

How we do it...

- ✓ Workshops and Trainings
- ✓ Participatory Planning and Design Work
- ✓ Policy Development Assistance
- ✓ Tours of Model Projects
- ✓ Networking Events
- ✓ Conferences



TACTICAL URBANISM

Short-Term Action || Long-Term Change

<http://tacticalurbanismguide.com/>

tac·ti·cal

adj: \tak-ti-kəl\

1. of or relating to small-scale actions serving a larger purpose
2. adroit in planning or maneuvering to accomplish a purpose

STREET
PLANS
MIAMI NEW YORK



- Deliberate, phased approach to change.
- Locally sourced solutions.
- Short-term, low cost, flexible.
- Low-risks, with possibility of high reward.
- Development of social capital between residents.
- Organizational capacity building.
- Activates dead space to spur investment.





Walk [Your City]

IT'S AN
18 MINUTE
WALK TO
GLENWOOD
SOUTH



IT'S A
7 MINUTE
WALK TO
RALEIGH CITY
CEMETERY



walkraleigh.com

Walk [Your City]

- Used Kickstarter to put sign template on line (549 backers pledged \$11,364)
- Now online/mobile platform
- Walkyourcity.org





“two hundred years of American Technology has unwittingly created a playground of unlimited potential. but it was the minds of 11 year olds that could see that potential”

- craig stecyk 1975

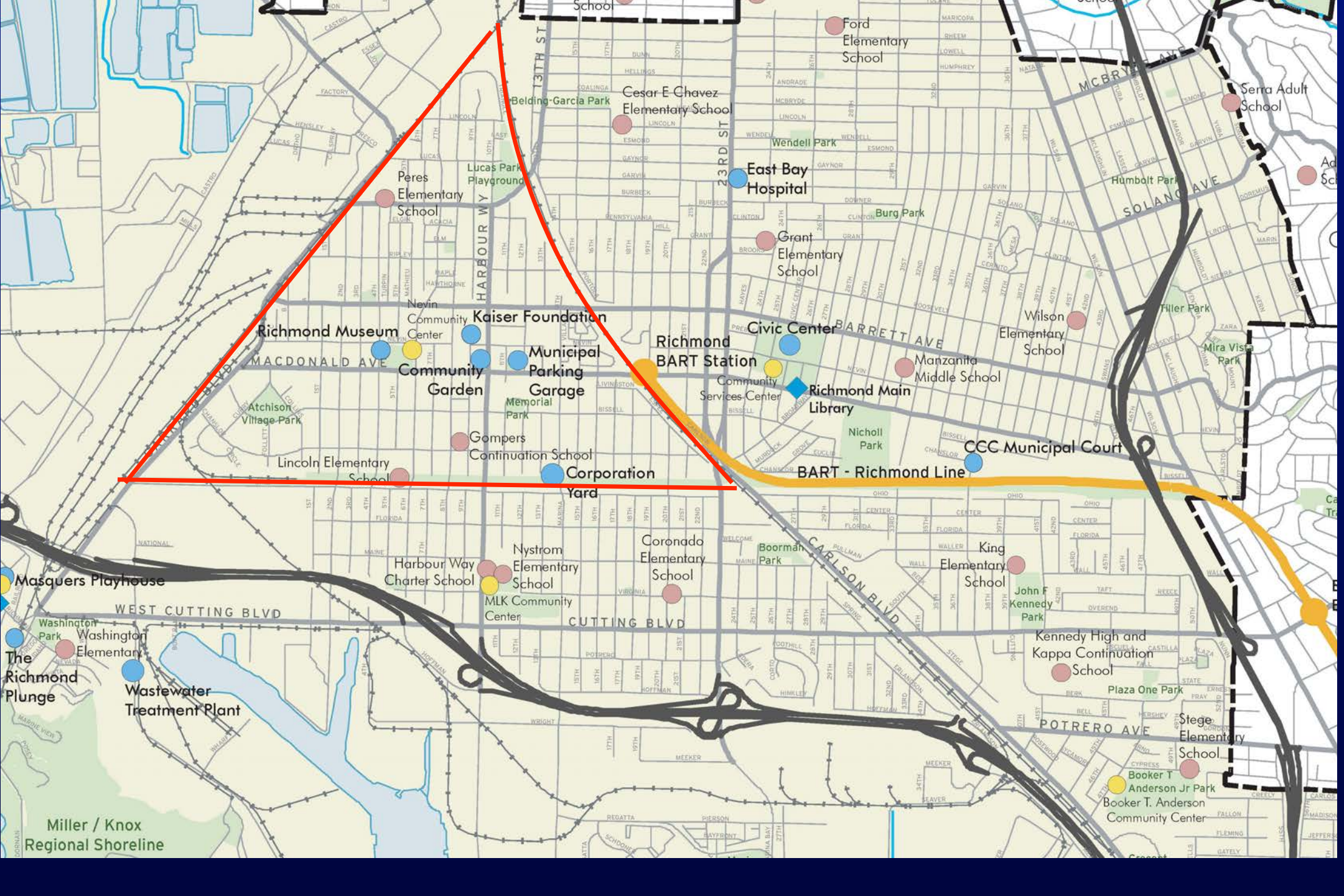


Yellow Brick Road

- Conceived of by local youth in 2008
- Funding from Caltrans 2012/13 to Plan
- City of Richmond, LGC and Pogo Park







Richmond Museum

Kaiser Foundation

Richmond BART Station

Civic Center

Community Garden

Municipal Parking Garage

Richmond Main Library

Macdonald Ave

Atchison Village Park

Gompers Continuation School

Corporation Yard

BART - Richmond Line

CCC Municipal Court

Lincoln Elementary School

Harbour Way Charter School

Nystrom Elementary School

Coronado Elementary School

King Elementary School

John F Kennedy Park

Kennedy High and Kappa Continuation School

Plaza One Park

Steger Elementary School

Booker T Anderson Jr Park

Booker T. Anderson Community Center

Wastewater Treatment Plant

Washington Elementary

Richmond Plunge

Miller / Knox Regional Shoreline

Elm Park

- Pogo Park transformation
- Connect assets with the Yellow Brick Road















Mapping the Yellow Brick Road











107

BUSTAS

RED

NK







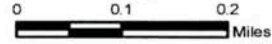




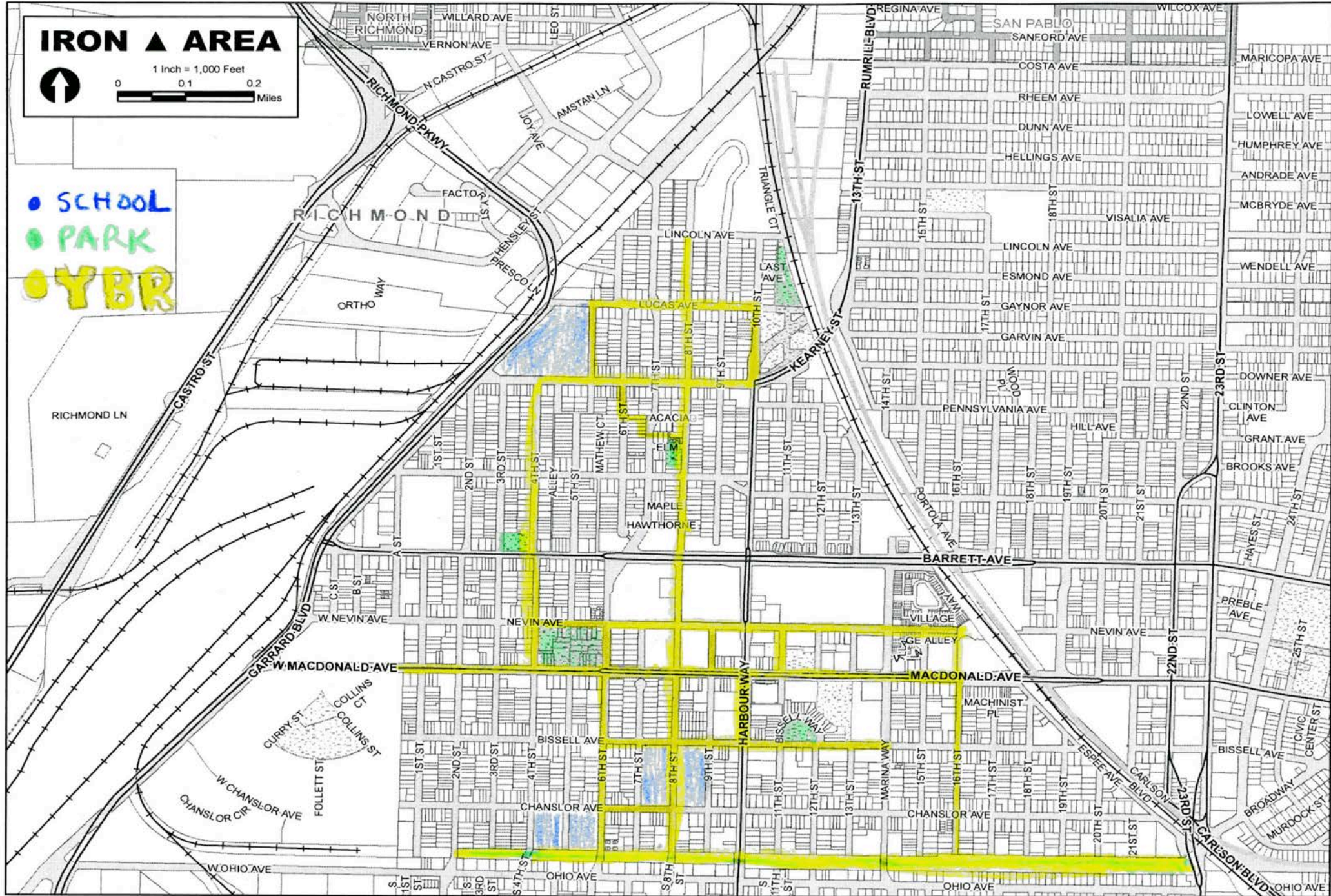
IRON ▲ AREA



1 Inch = 1,000 Feet



● SCHOOL
● PARK
● YBR



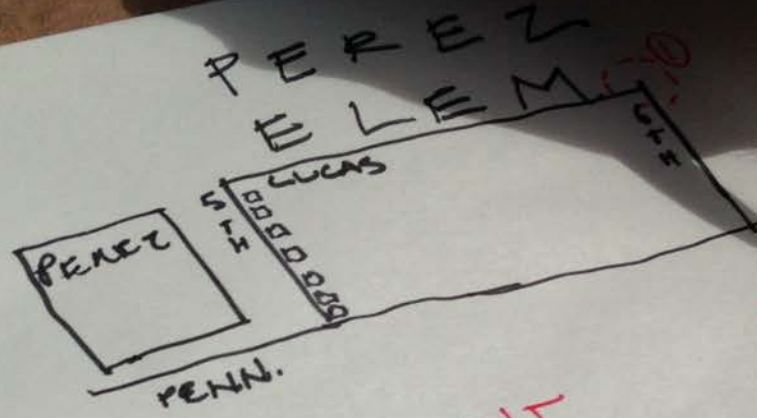
Developing the Solutions





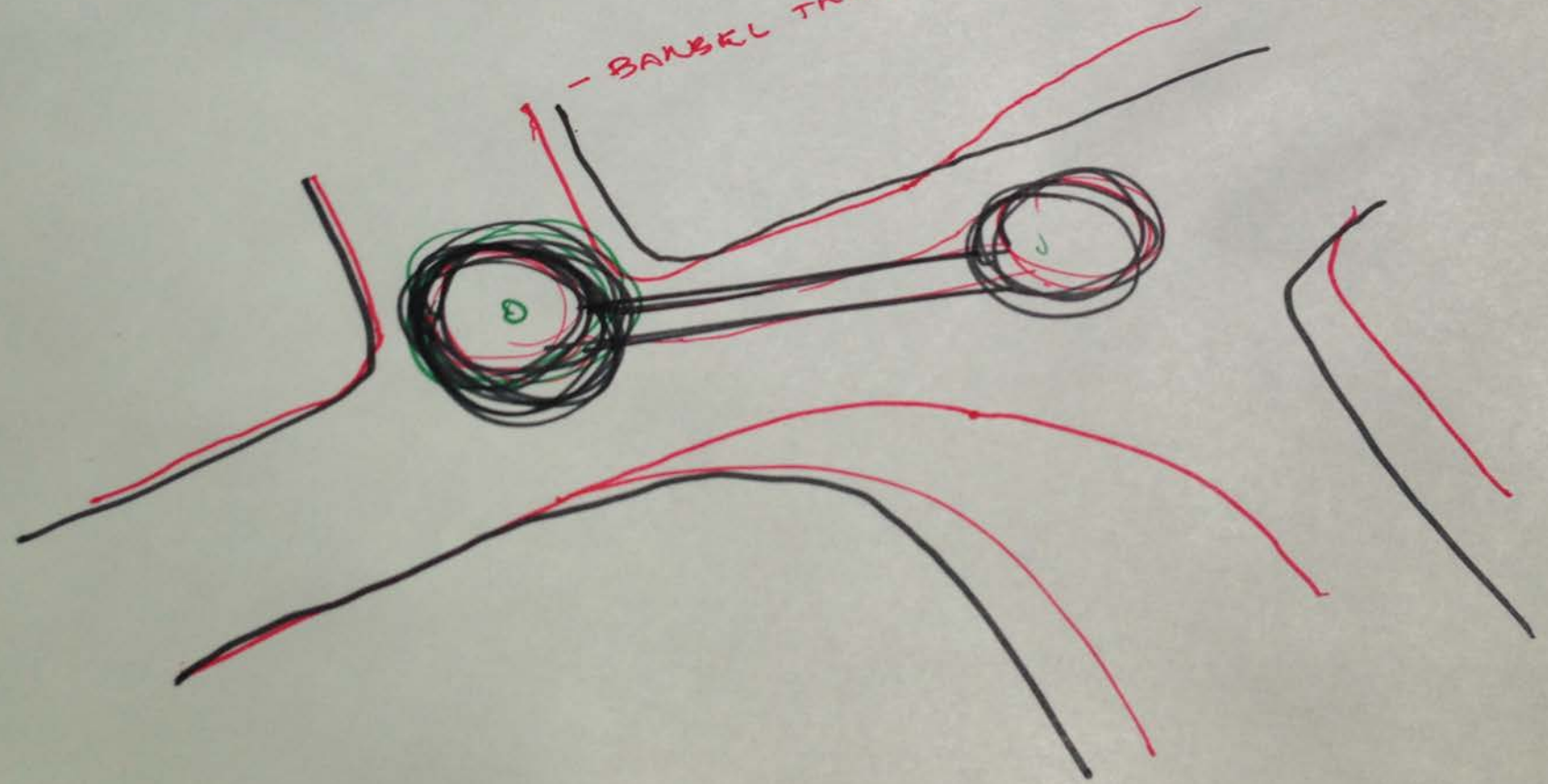






- BANJAL TREATMENT

①



Preparing for the Installations

- Roundabouts
- Curb extensions
- Crosswalks
- Bike lanes
- Back-in angle parking
- Sidewalk widening



to the **YELLOW BRICK ROAD**



Living Preview

Friday, October 17
1pm – 4pm

Saturday, October 18
10am – 1pm

Elm Playlot (Pogo Park)
720 Elm Avenue
Richmond, CA 94801

Information
call: 510-215-5500
email: contact@pogopark.org

Come and experience the "Living Preview" for yourself: a life-sized, temporary installation to show the proposed changes to the streets around Elm Playlot, a small city park and children's playground located in the heart of Richmond's Iron Triangle neighborhood.

Funded by a grant from Caltrans, our goal is to design street improvements that will a) slow cars down and b) create a network of child and family-friendly streets that encourage people to walk and ride a bike (instead of using a car) to get to key destinations in the Iron Triangle neighborhood.

We encourage you to come to the Living Preview, test a sample route (in 3-D!), and let us know what you think. We want to incorporate your feedback into our final design. See you there!



FEHR PEERS



Temporary Striping Plan

- Roundabouts
- Curb extensions
- Crosswalks
- Bike lanes
- Back-in angle parking
- Sidewalk widening

LEGEND

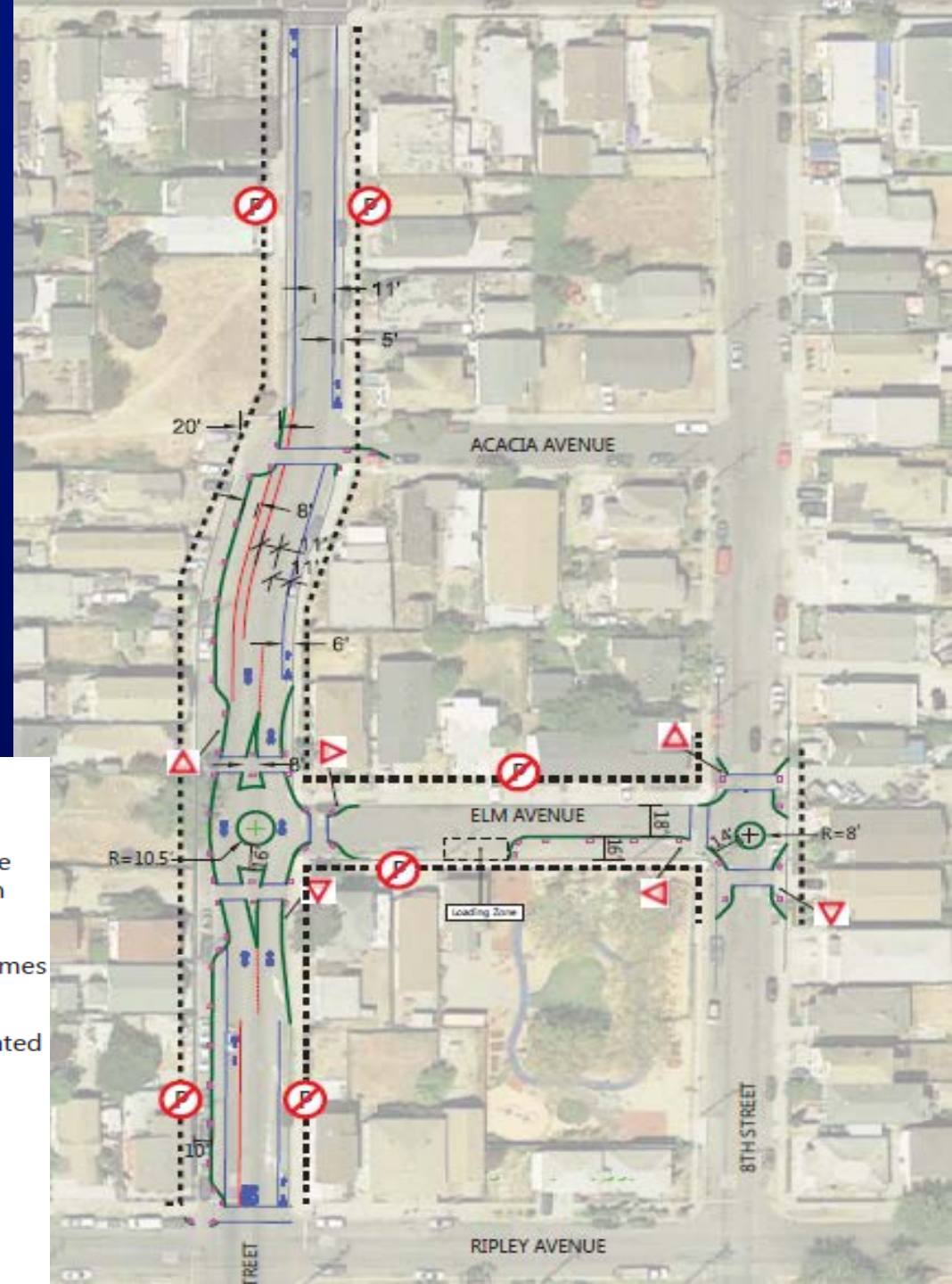
STRIPING

- Spray Chalk
- White Duck Tape
- Yellow Duck Tape
- ↔ Spray Chalk Sharrow Legend
- ↔ Spray Chalk Bicycle Lane Legend
- Curb: straw wattle or sandbags
- ▭ Raised landscape planter, wine barrel, or similar vertical element

SIGNS

- ▽ YIELD sign on A-frame, place garbage bag over STOP sign
- ⊘ NO PARKING signs on A-frames

NOTE: Wayfinding signs to be located throughout route and key turning points along the route





LIVING
PREVIEW
FRISAT



DRUG-FREE
SCHOOL
ZONE















ELM AVE
7th ST

11052292













E62

FD

193443

SLOW
CHILDREN







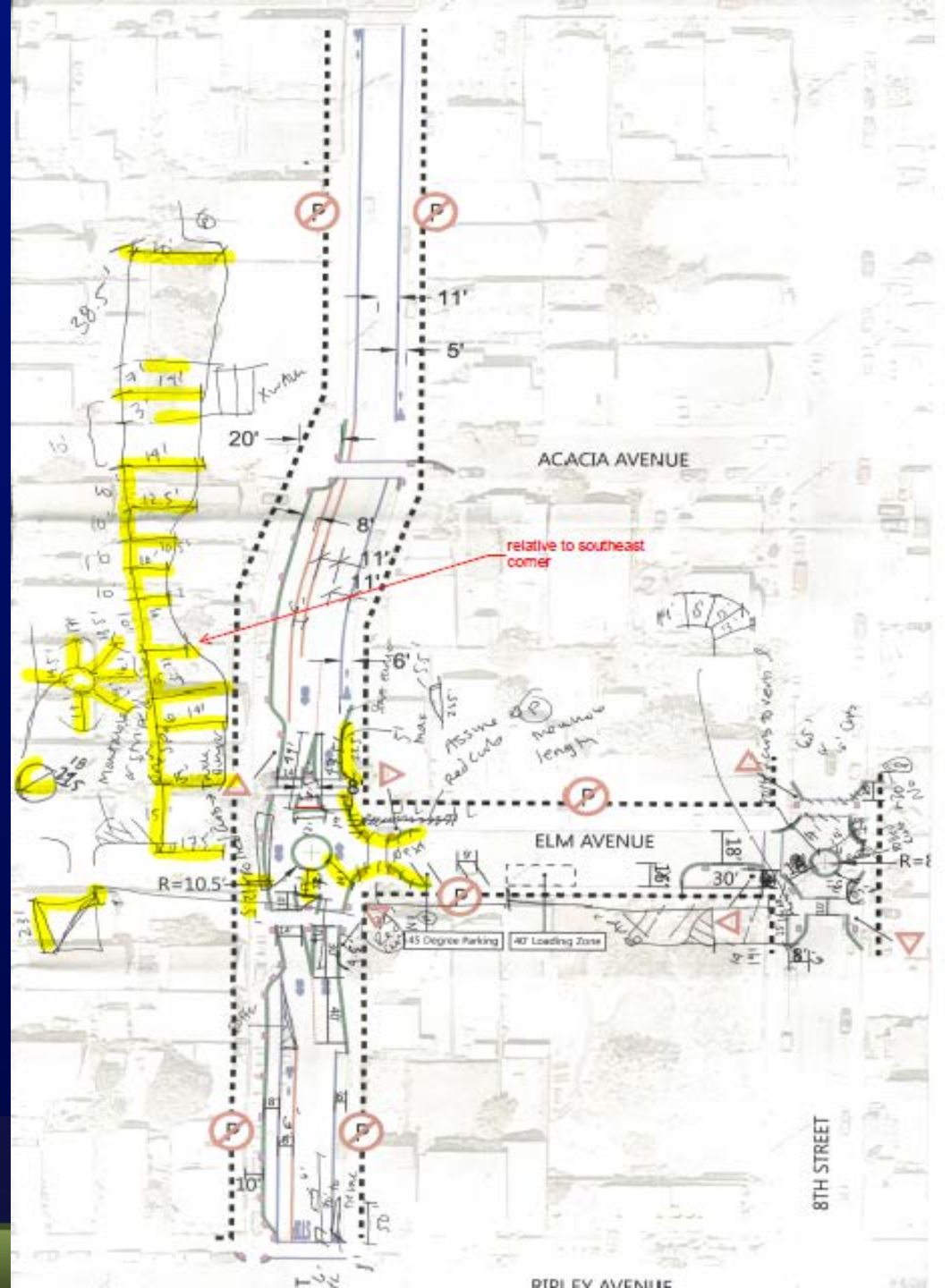
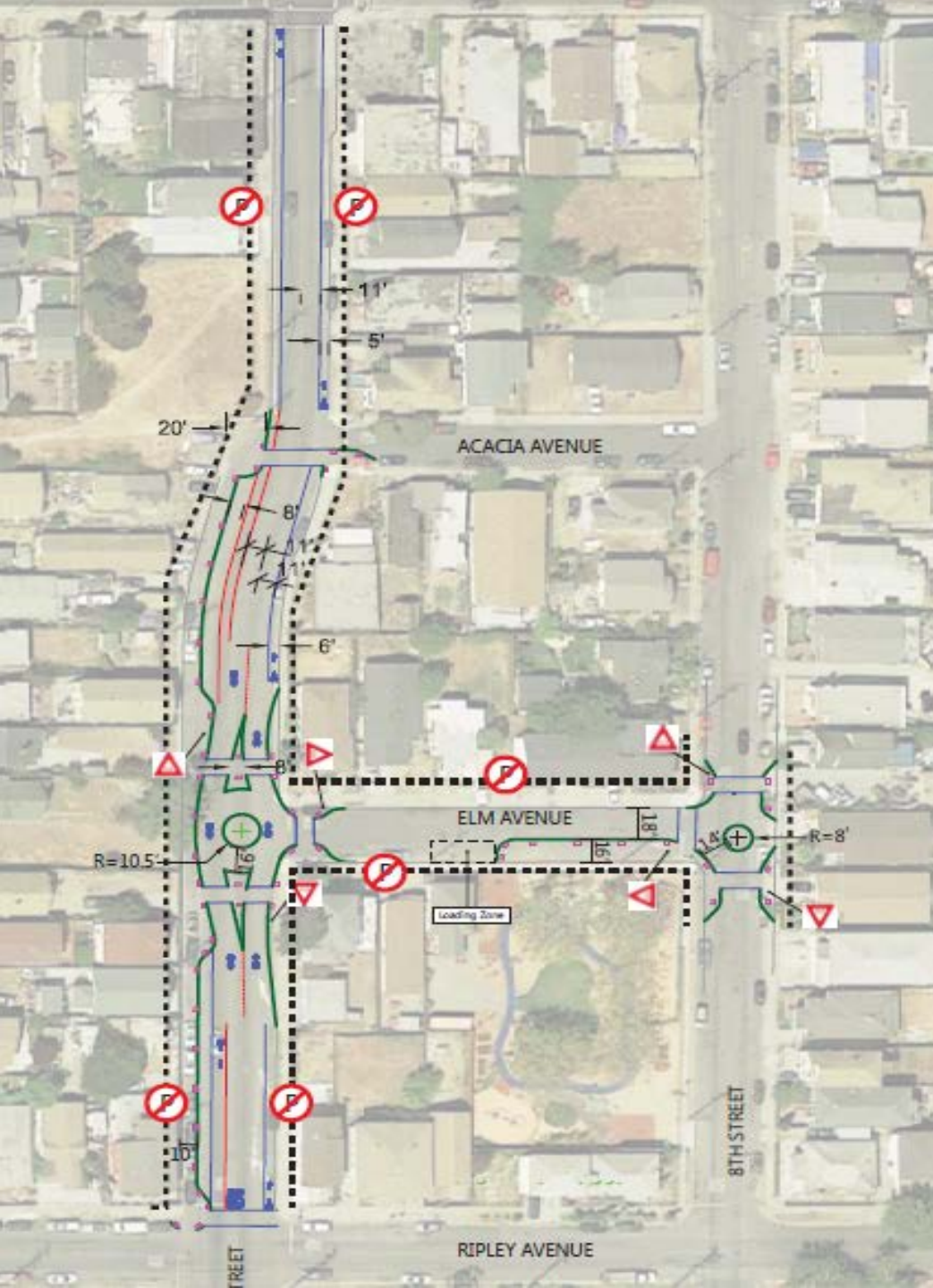
RICHMOND FIRE

RICHMOND FIRE DEPT. T64











1211

NATIONWIDE

5/T

Nationwide



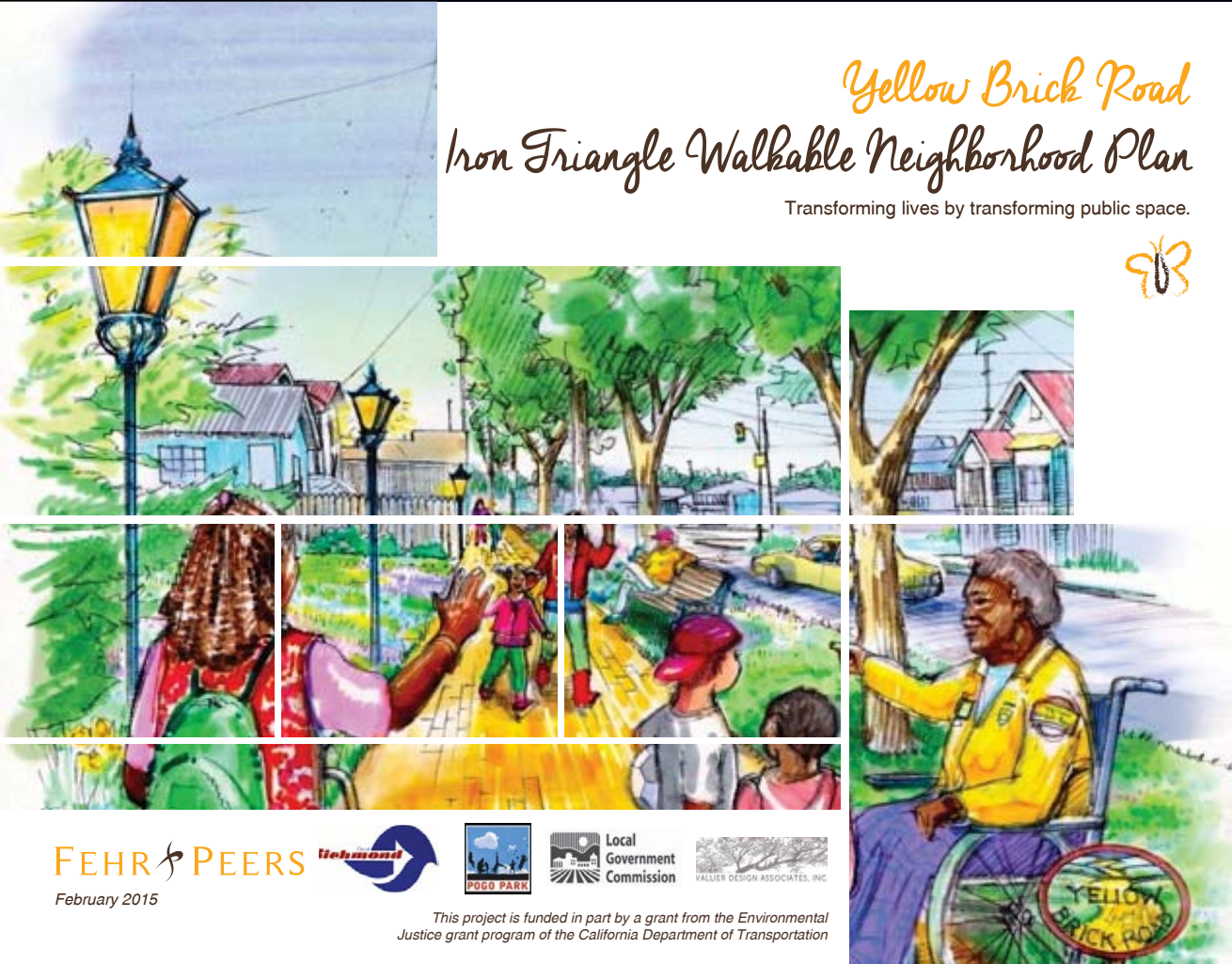












Community-Based Plan



Yellow Brick Road
Iron Triangle Walkable Neighborhood Plan

Transforming lives by transforming public space.



FEHR PEERS    

February 2015

This project is funded in part by a grant from the Environmental Justice grant program of the California Department of Transportation

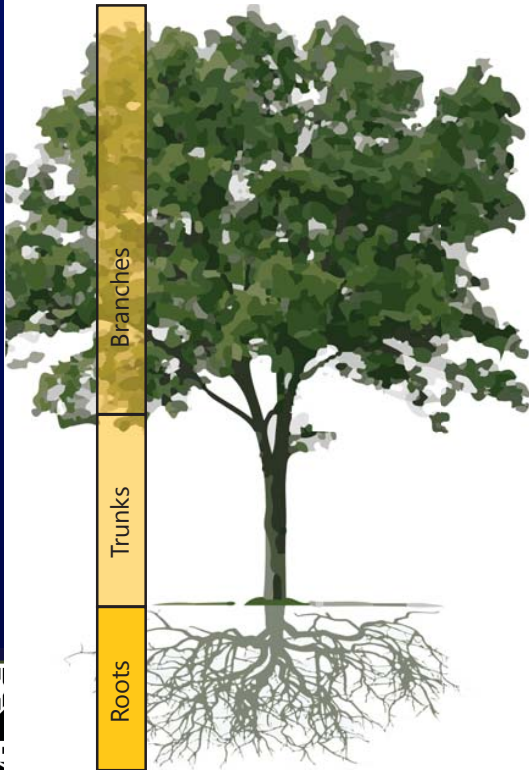


Overview

The “Root Route” is envisioned to create the first phase of the Yellow Brick Road. The Root Route will provide a critical north-south route between Elm Playlot, located at the intersection of 8th Street and Elm Avenue, to Peres Elementary School, located near the intersection of Pennsylvania Avenue and 4th Street. This first Yellow Brick Route will build on recent community and City investments at the Elm Play Lot and on Pennsylvania Avenue. The Root Route consists of the following segments:

1. **Pennsylvania Avenue** — between 4th and 7th Streets
2. **7th Street** — between Pennsylvania and Elm Avenues
3. **Elm Avenue** — between 7th and 8th Streets

Design plans and a fact sheet are presented on the following pages.



- Legend**
- Yellow Brick Road Routes
 - School
 - Park
 - Iron Triangle Study Area
 - Root Route
 - Existing Trail/Path
 - Proposed Trail/Path



CLUDE DECORATIVE PAVING, STAMPED
 RIZED PAVEMENT OR PAINT PER THE YELLOW
 UNCONTROLLED CROSSWALKS MAY BE
 ER STRIPING.
 L CURB RAMP WHEREVER FEASIBLE.
 ATMENTS SHOULD BE CONSIDERED TO
 VEMENTS IN THE NEAR TERM, AS FEASIBLE

REMOVE EXISTING R1-1 STOP SIGNS
 AND POLES. INSTALL NEW R1-2
 YIELD SIGNS ON NEW POLES AT
 LOCATIONS SHOWN. DECORATIVE
 CROSSWALKS WITH STAMPED ASPHALT,
 PAVERS, OR PAINT PER YELLOW BRICK
 CONCEPT

RECONSTRUCT EXISTING
 DRIVEWAYS ON WEST
 SIDE OF 7TH STREET

ROLLED CURB TO
 MAINTAIN EMERGENCY
 VEHICLE ACCESS

RETAIN APPROXIMATELY 5 PARKING SPACES

DETAIL 39 BICYCLE
 LANE STRIPE

DETAIL 39A BICYCLE
 LANE INTERSECTION
 STRIPE

RETAIN 3 PARKING SPACES

RED CURB - PARKING PROHIBITED

RED CURB - PARKING PROHIBITED

RELOCATE EXISTING INLET

RED CURB

ALLOW 1
 PARALLEL
 PARKING SPACE

STRIPES 6' BACK-IN ANGLED
 PARKING SPACES ON SOUTH
 SIDE

Elm Play Lot

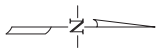
DECORATIVE CROSSWALKS
 WITH STAMPED ASPHALT,
 PAVERS, OR PAINT PER
 YELLOW BRICK CONCEPT

RELOCATE EXISTING
 INLET

RED CURB NORTH SIDE OF ELM AVENUE - PARKING PROHIBITED

INSTALL R=4' TRAFFIC CIRCLE

REMOVE EXISTING R1-1 STOP SIGNS AND
 POLES. INSTALL NEW R1-2 YIELD SIGNS ON
 NEW POLES AT LOCATIONS SHOWN.
 DECORATIVE CROSSWALKS WITH STAMPED
 ASPHALT, PAVERS, OR PAINT PER YELLOW
 BRICK CONCEPT



REPLACE AND RELOCATE
 EXISTING R1-1 STOP SIGNS
 WITH NEW R1-2 YIELD SIGNS



CUSTOMIZED BICYCLE &
 PEDESTRIAN WAYFINDING SIGNS



SHARROW (TYP.) IN SHARED
 LANES AND THROUGH
 ROUNDABOUTS

Active Transportation Program

