

# County of San Luis Obispo Climate Change Adaptation

April 18, 2013



Penny Borenstein, MD, MPH  
Health Officer  
Public Health Department

# Climate Change Adaptation Planning

- Project funded by a grant from Kresge Foundation, 2009-10
- Supported by Local Government Commission
- SLO was chosen as pilot location based on several factors - high biological diversity, agricultural and wine industry importance, federal land ownership, coastal resources, and support from County officials.



# Strategic Planning Process

- Engagement of local leaders – help from LGC
- Identified/Forecast Local Climate Impacts
- Stakeholder Meetings held
- Briefed elected officials and administrators
- Conducted Public Workshop to get input
- Presented Final Report to Board of Supervisors
- Implement

# Participants

- Air Pollution Control District
- Cal Poly faculty
- Central Coast Clean Cities
- City and County elected and appointed leaders
- City and County planners
- Congressional Rep.
- Economic Vitality Corp.
- Farm Bureau
- Land managers
- National Estuary Program
- Mental Health – County, State Hospital
- PG&E
- Public Health officials
- Public Works
- Transportation
- Tribal Administration
- Water Resources Advisory Committee
- Various advocates, others

# Projected Future Climatic and Ecological Conditions in San Luis Obispo County

## Report by:

Marni E. Koopman

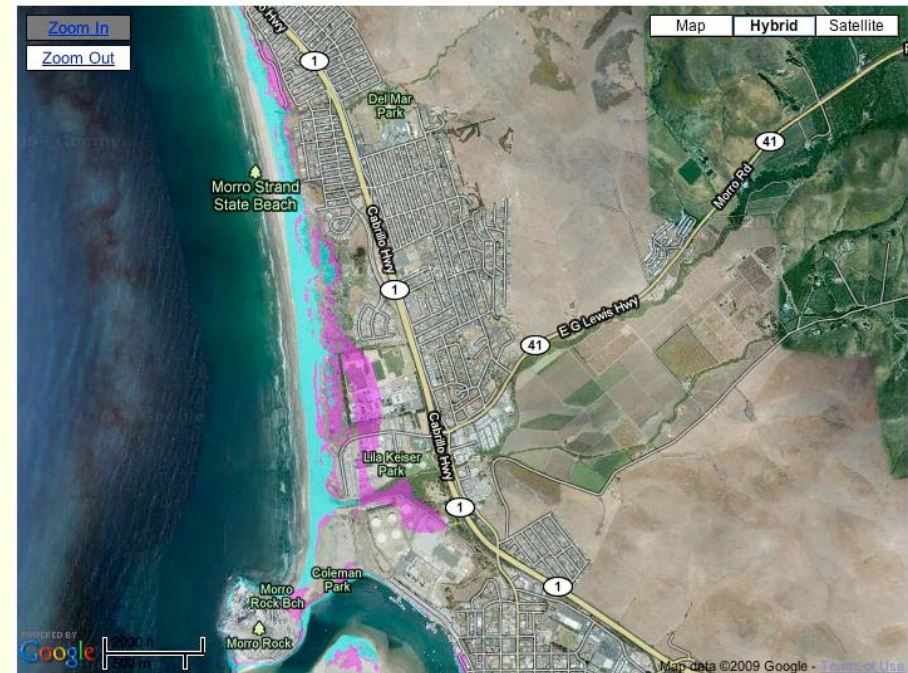
Richard S. Nauman

Jessica L. Leonard

The National Center  
for Conservation  
Science and Policy  
April, 2010

## Impacts of Sea Level Rise on the California Coast

Areas and infrastructure vulnerable to flooding and erosion  
Please see [full report](#) for assumptions, methods, and conclusions.



# Climate Impacts Identified

- Hotter, drier longer summers
- More severe storms winter/spring
- More rapid sea level rise
- Loss of coastal wetlands, marshes, estuaries
- Declines in water availability and quality
- Loss of native species, ecosystems, pine forests
- Increase in wildfires
- Increase in invasive species



USDA Forest Service



# Adaptation Strategies

- Public Health & Emergency Preparedness
- Agriculture
- Water & Wastewater Management
- Infrastructure
  - Transportation
  - Energy
- Coastal Marine Resources & Tourism
- Species & Ecosystems



# Public Health & Emergency Preparedness

---

- ★ Expand outreach and education on Emergency Preparedness
- ★ Identify and target vulnerable populations
  - Implement strategies to bolster wildfire management planning
- ★ Increase local food production and security while reducing vehicle miles associated with food delivery
- ★ Promote healthy lifestyle practices through new policies and strategies



# Successes



- Healthy Communities
- Buy Local
- Air Pollution Efforts

# Healthy Communities

- A subgroup of HEAL-SLO
- Partnership to bring health to planning table
- Data-driven to arm and inform stakeholders and decision-makers.
- Expands role of public health in development projects and general plan updates.



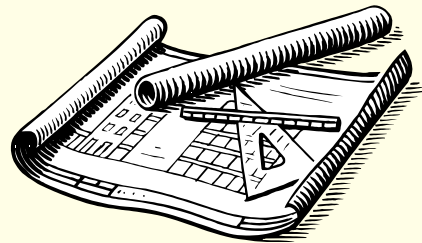
# Type of Project Referrals

- Multi-Family Housing
- Mixed Use Commercial
- Subdivisions
- General Plan updates



# Public Health as Planning Partner

- Public health language is incorporated into City and County General Plans for:
  - Walkable, bikeable, wheelable communities
  - Transit-oriented mixed use development
  - Safe Routes to School
  - Higher density - infill



# Selected Guidelines

- Located within ½ mile of food stores, retail services, schools, daycare and recreation centers?
- Served by local transit?
- Provides connected and safe pedestrian and bicycle access?
- Natural gathering places for neighbors?
- Areas for community gardening?

GRADING PERIOD		1	2	3	4
READING					
WRITTEN COMMUNICATION	A				
MATHEMATICS	A				
SCIENCE/HEALTH	C				
SOCIAL STUDIES	B				
ART	B				
MUSIC	A				
PHYSICAL EDUCATION	C				
Grade Average		B			
Attendance:	Present	4/7			
	Absent	0			
	Tardy	0			

A = Excellent • B = Good • C = Satisfactory  
U = Unsatisfactory • I = Incomplete

Student:



# Referral Comment Process

- Comments based on accepted best practices for healthy communities
- Comments on projects due back to Planning Department in 30 days
  - Copied to Health Commission
- More opportunities for General Plan comments
  - Committee recommendations forwarded to HC with presentation
  - HC recommendations forwarded to Planning Commission and Board of Supervisors

# Buy Local



**Another HEAL-SLO Policy Initiative...**

# Why Pass a “Buy Local” Policy?

- Symbolic, Leadership
- Supports Local Economy
- Increases Food Security
- Improves Traceability
- Healthier and Tastier
- Helps Fight Obesity Epidemic
- Reduces Carbon Footprint





# How are We Defining “Local”

- Tier 1 - Organic and grown within SLO County
- Tier 2 – Grown within SLO County
- Tier 3 – Grown within 5 neighboring counties – Monterey, Kern, Kings, Ventura, Santa Barbara
- Tier 4 – Grown within State of California





# Outcomes So Far

- Policy passed in County
- Policies passed in all 7 cities
- Move to schools – who have significant food purchasing power



# Air Pollution

- Smoking Ban on County Owned Property
- *Air Quality and Your Health Campaign*



# County Tobacco Ordinance

- Started working on this in 2009
- Passed June 2012
- Bans smoking on all County property, including buildings or structures owned, leased, concessioned; includes Parks; limited exceptions



# *Air Quality and Your Health Campaign*

- Educational effort
- Air Quality Forecasts
- School Flag Campaign



Brochures displayed at a local doctor's office!

# What's Missing?

- Detailed plan with timeline
- Ongoing coordination across sectors
- Political will
- \$\$\$

# Thank You!



Atascadero Farmer's Market