


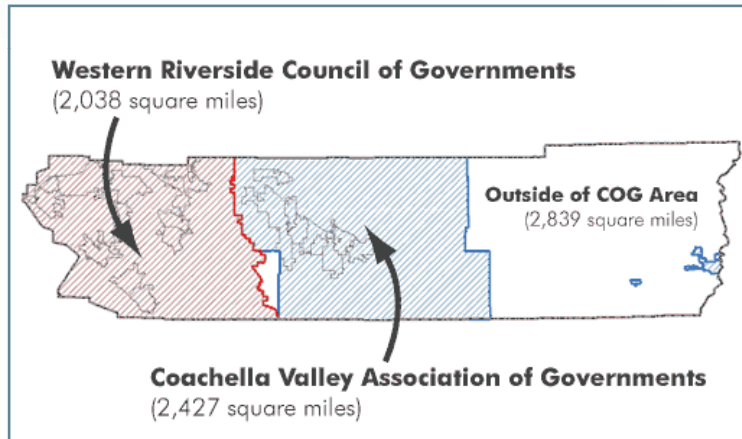


The County

- 11th Largest US County in Population
•**2,242,744**
- 3rd Fastest Growing US County (2010 census)
•**81,411** (added since 2000)
- 6th Largest US County in Land Mass
•**7,303** square miles
- Cities in County
•**27** (up from 24)



The County--COGs



The County--Government

- Board of Supervisors
 - 5 Districts
- Owned Buildings
 - 450 facilities
 - 9 million square feet
- Leased Buildings
 - 250 facilities
 - 3 million square feet



The Challenges—Energy Efficiency

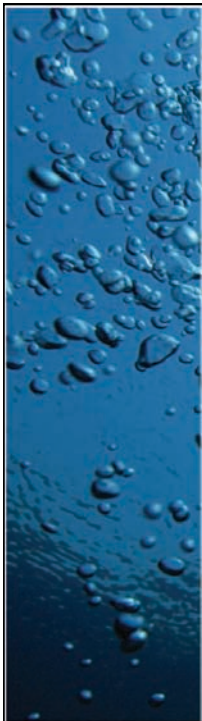
- One energy staff member
- 40 county utility service providers
- Agency Merger (EDA/FM)
- Existing EE Program
- Declining Budgets (Economy)

The Challenges—Existing EE Program





The Challenges—Existing EE Program



The Challenges—Existing EE Program




The Challenges—Existing EE Program



The Challenges—Existing EE Program





The Challenges—Declining Budgets

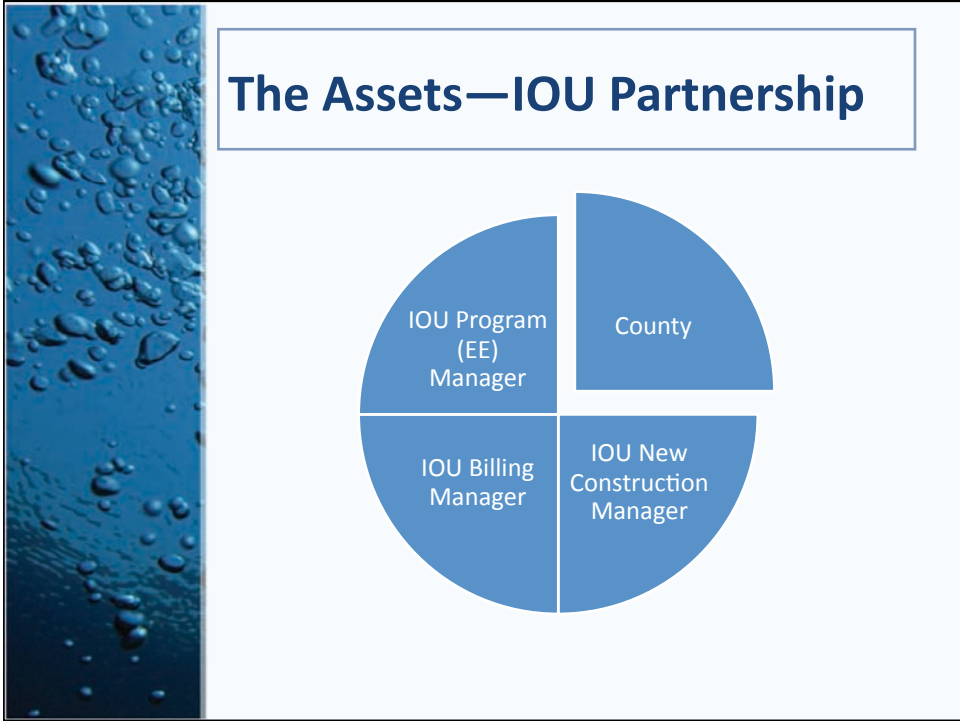
- Deferred Maintenance
 - EE projects
 - Deferred maintenance
 - Emergency deferred maintenance
 - ADA
 - UST

FY07-08	\$3,441,663
FY08-09	\$3,000,000
FY09-10	\$2,924,550
FY10-11	\$1,125,000
FY11-12	\$ 678,196



The Assets

- Partnership with Southern California Edison & The Gas Company
- Capital Projects Program
- Fledgling Solar Program



The Assets—Capital Projects


- **Savings By Design**

- 2007—3 facilities
- 2008—8 facilities
- 2009—12 facilities
- 2010—4 facilities

The Assets—Capital Projects


Palm Desert Sheriff Station





The Assets—Capital Projects

- LEED-Gold
- 34.5% > Title 24
- \$168,190 Incentive
- 56 kW PV Solar System



The Assets—Solar Program

- PV primarily on new facilities
- Three solar retrofits through EECBG
- Two new systems in 2010
- Five new systems in 2011
- Five systems in design



The Goal: Use Design & Solar Incentives to Fund Energy Efficiency



The Process—Energy Conservation Fund

- Idea proposed to EDA Management
- Policy Draft
 - Modify existing Energy Policy (H-4)
- EDA Management negotiated with Executive Office
 - Interest-bearing account
 - EO gets interest
- Board Agenda August 10, 2010
 - **Approved** – without comment
- Fund established BEFORE the Palm Desert Sheriff Station checks arrived
 - First deposit--\$168,190



The Policy—Features

- Defines types of rebates and incentives
- Identifies EDA as agency responsible for the rebate/incentive process
- Requires all rebate and incentive checks be deposited into the Energy Conservation Fund
- Identifies EDA as the agency responsible for identifying and selecting projects to be performed with the Fund



The Policy—Exceptions

- If rebate/incentive must serve as matching or leveraged funds
- If rebate/incentive is needed to cover project costs
- If rebate/incentive reduces the direct purchase price of a piece of equipment
- If the rebate/incentive is needed to achieve a higher level of efficiency than it could without the rebate/incentive.



The Policy—Sources of Funds

- New Construction Design Incentives (5 completed buildings; 4 pending)
- Monthly solar rebate from CSI program (for 5 years)
- One-time solar rebate from CSI
- Strategic Plan element incentive from SCE and the Gas Company for establishing fund



The Policy—Results

- Current fund balance is:

•**\$211,352**

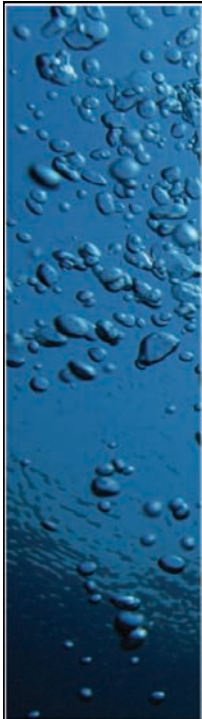
- Additional funds anticipated by December 2011:

•**\$ 96,000**

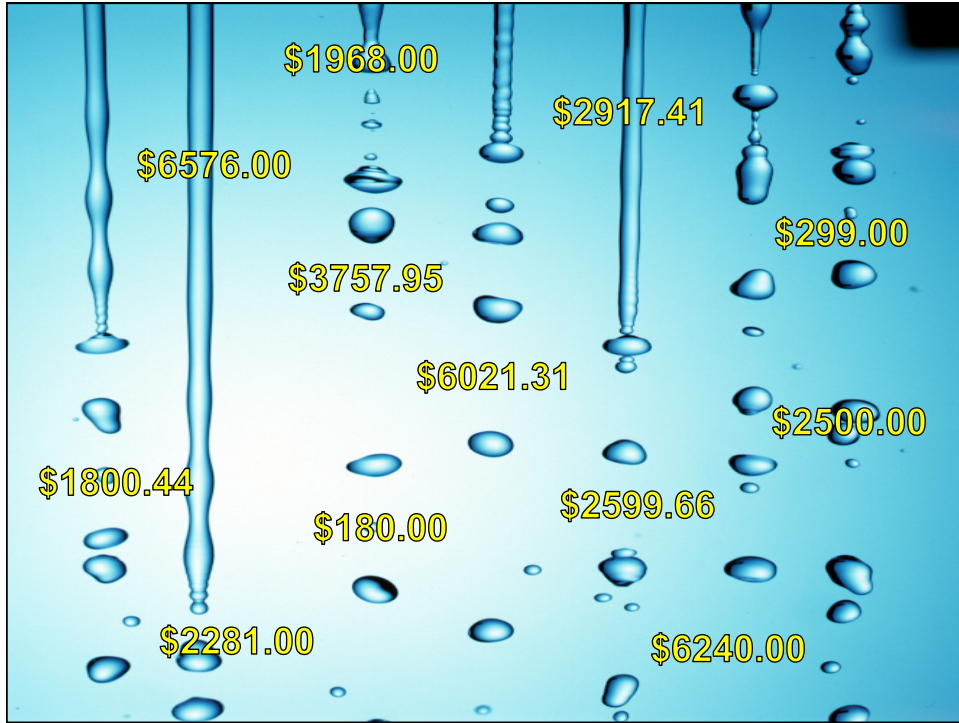


The Policy—Lessons Learned

- Carefully choose fund accounting string number for deposits
- Communicate regularly with Accounting about future checks that are expected
- Communicate plans for the funds as soon as possible
- Don't underestimate small beginnings**



Every drop counts AND adds up!





ENERGY CONSERVATION FUND
Riverside County

Janet Purchase
jpurchase@rivcoeda.org
951-955-4898

© TemplatesWise.com