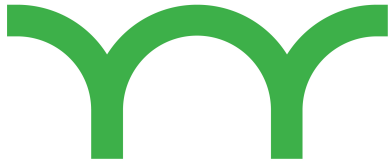
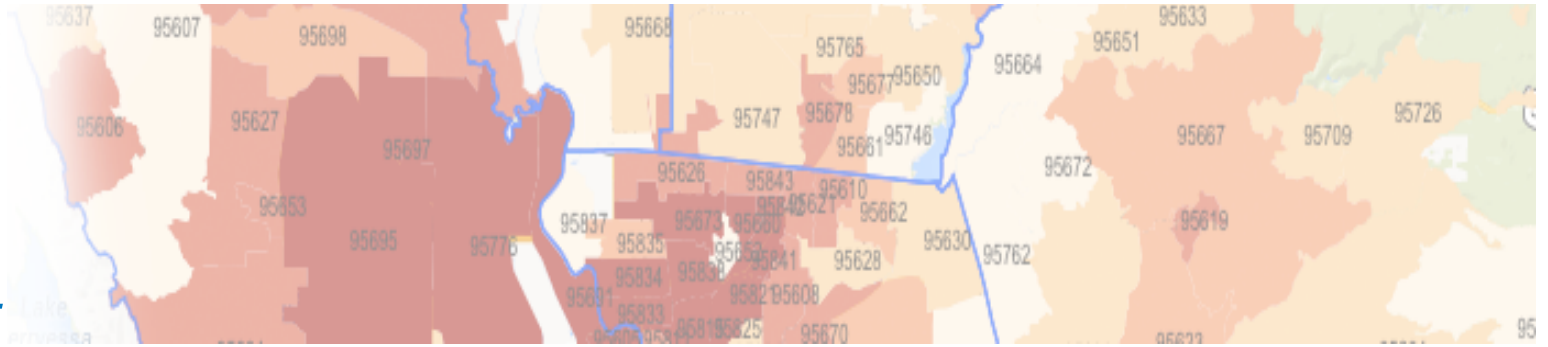


VALLEY VISION



*Connect. Partner. Impact.*



*Living Well in the San Joaquin Valley:  
New Directions for Healthy Places*

## **Healthy Living Map** *of the Capitol Region*

**Bill Mueller, Chief Executive**

**Valley Vision**

September 10, 2014

# About **Valley Vision**



Impact



Connection



Credibility



Leadership



Capacity for Action



*Connect. Partner. Impact.*

# Community Health Needs Assessment (CHNA)

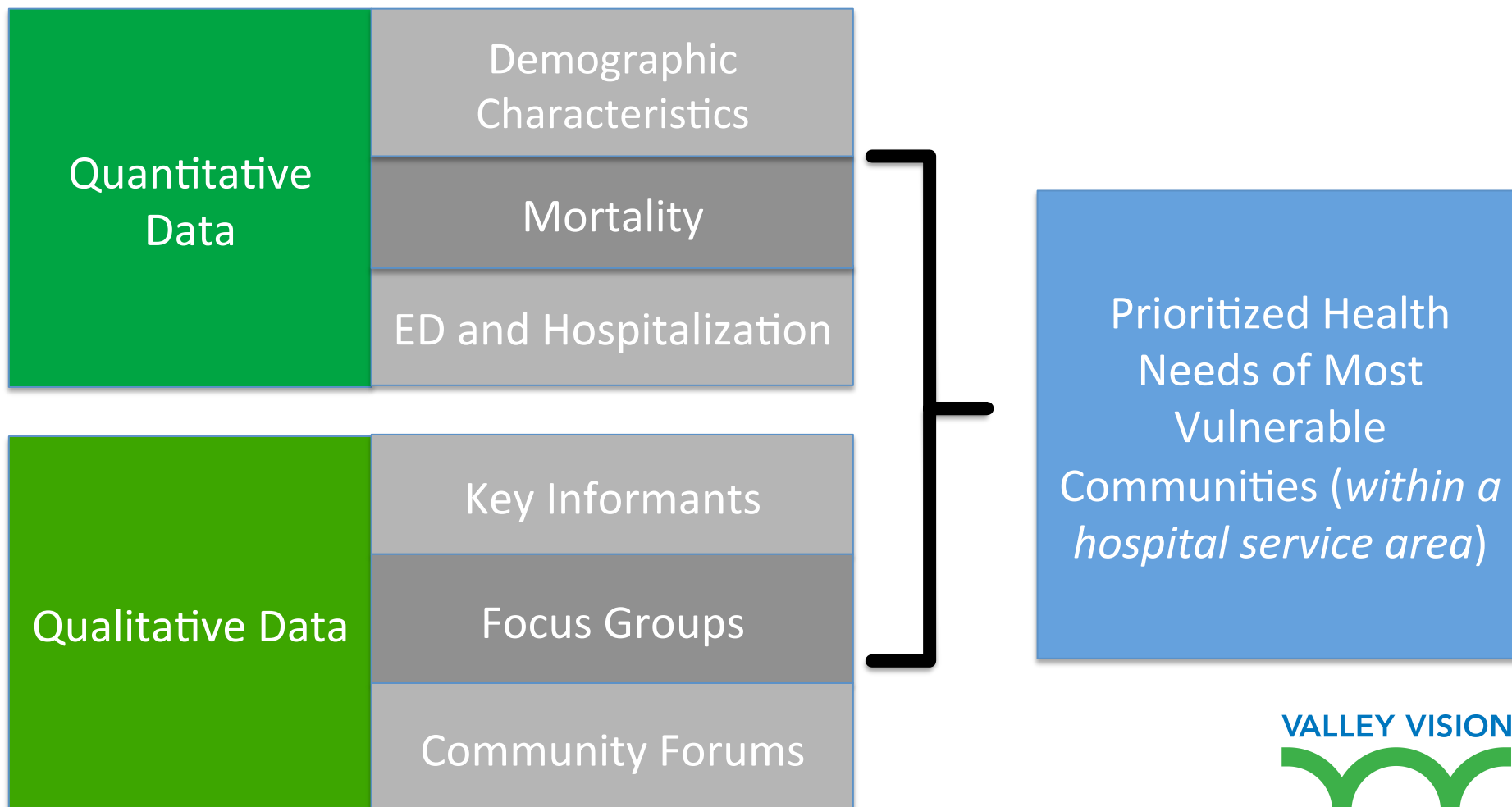
*The purpose is to identify **communities** and **special populations** experiencing health disparities and to uncover **factors** that prevent people from living healthier lives.*

**Partners include:**



# Community Health Needs Assessment

## *Data Synthesis*



Connect. Partner. Impact.

- <http://www.HealthyLivingMap.com>

- The Healthy Living Map website was created to make health data used to conduct the CHNAs accessible to the communities served by each nonprofit hospital.

## Welcome!

The Healthy Living Map is a collaborative project of Dignity Health member-hospitals, Kaiser Permanente, Sutter Health Sacramento Sierra Region, and the UC Davis Health System. The interactive ZIP Code map houses health and wellbeing data for every ZIP Code in Amador, western El Dorado, Nevada, south Placer, Sacramento, Solano, Sutter, Yolo, and Yuba Counties. You can also find each member hospitals' Community Health Needs Assessment (CHNA) and a link to their Community Health Improvement Plan.



*The creation of the Healthy Living Map was a collaborative process with:*



Click here to download a PDF of the printed publications summarizing the results of this year's Community Health Needs Assessments.

### **What is a Community Health Needs Assessment (CHNA) and how often is one completed?**

Each nonprofit hospital in the greater Sacramento region conducts a CHNA within its defined service area every three years. [Read more](#)

### **Where do the data come from?**

Both qualitative and quantitative data were collected for the CHNAs. The main sources of quantitative data were CA Dept. of Public Health, OSHPD, U.S. Census, CA Health Interview Survey (CHIS) and other credible sources. [Read more](#)

### **How are the CHNAs utilized by the nonprofit hospitals?**

Results of the CHNA provide information that is used for each hospital's Community Health Improvement Plan. [Read more](#)

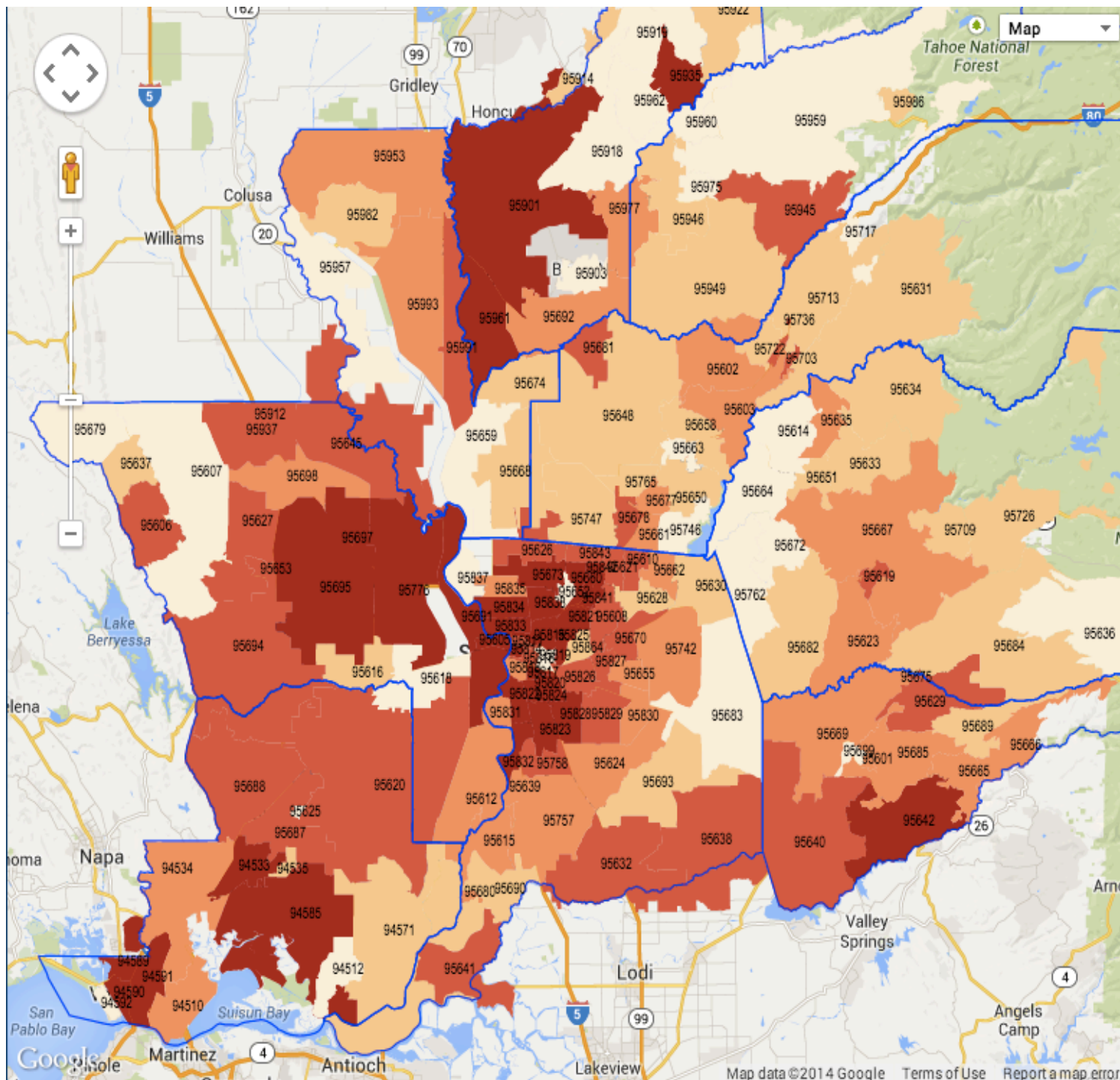
### **How can you use the Healthy Living Map?**

The Healthy Living Map website was created to make health data used to conduct CHNAs accessible to the communities served by each participating nonprofit hospital.

### **What is the CHVI?**

The Community Health Vulnerability Index (CHVI) is a community health-planning tool that identifies communities across a large area more vulnerable to poorer health outcomes. [Read more](#)





Use Slider to fade zip map

Select Health Indicator for Map

- ED Visits by Cause
- Asthma
- Injury Assault
- COPD
- Injury Self-Inflicted
- Diabetes
- Injury Unintentional
- Heart Disease
- Stroke
- Hypertension
- Substance Abuse
- Mental Health

+ Hospitalizations by Cause

+ Mortality Rates

+ Health Indicators

+ CHVI

Show Help?

Generate Data Sheets

Select County to use for comparison

Sacramento

Select two or more zip to view Aggregate Data

Show Aggregate Data Sheet

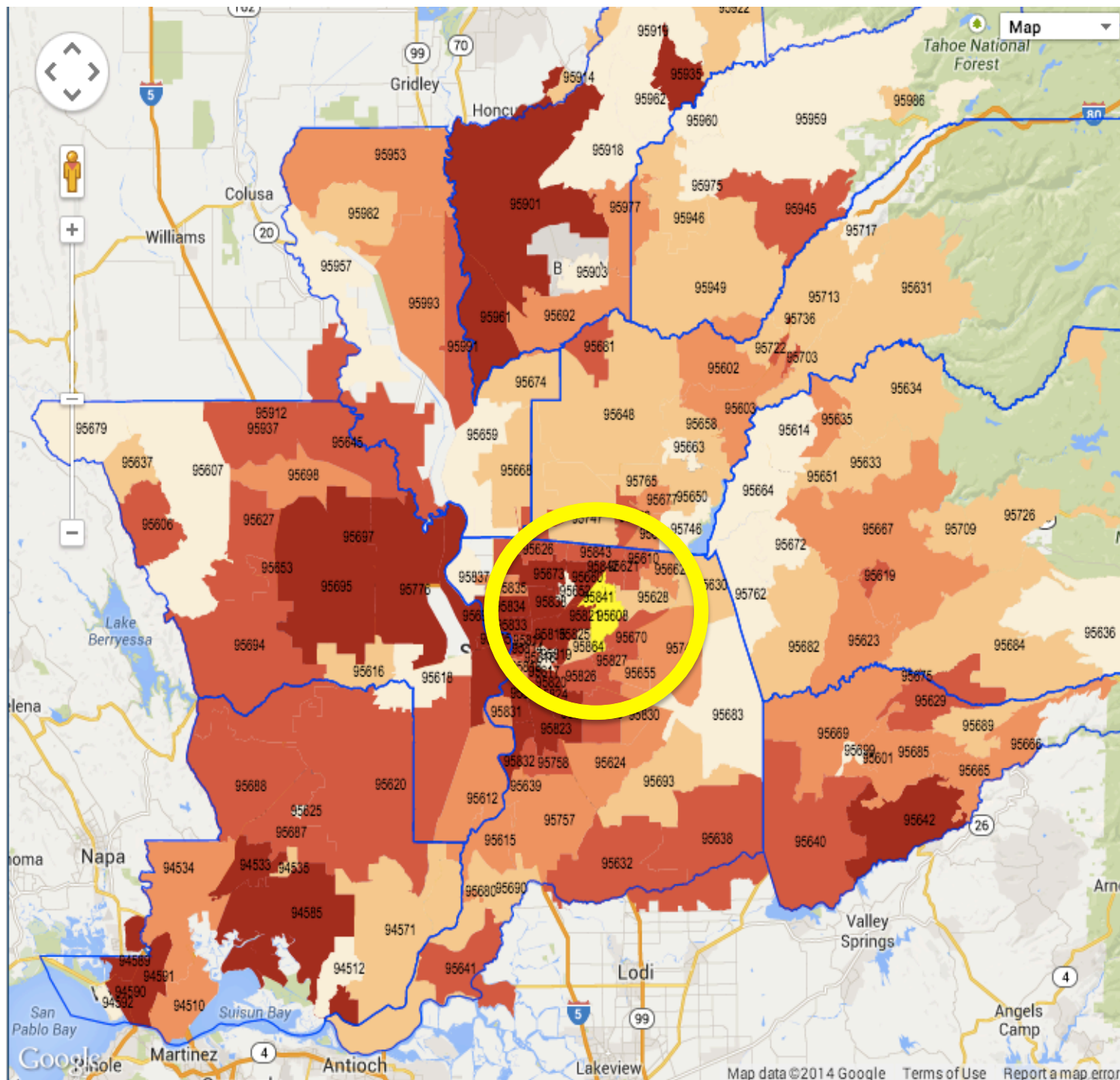
Select ONE zip to view Demographic Data

Show Demographic Data Sheet

Legend

Rank

0-113 114-149 150-202 203-262 263-604



Use Slider to fade zip map

## Select Health Indicator for Map

- ED Visits by Cause

## Asthma

## Injury Assault

COPD

### Injury Self-Inflicted

## Diabetes

**Injury: Unintentional**

## Heart Disease

Stroke

## Hypertension

## Substance Abuse

## Mental Health

### + Hospitalizations by Cause

### + Mortality Rates

+ Health Indicators

**+ CHVI**

[Show Help?](#)

**Generate Data Sheets**

Select County to use for comparison

Sacramento

Select two or more zips to view

### Aggregate Data

[Show Aggregate Data Sheet](#)

Select ONE zip to view Demographic Data

[Show Demographic Data Sheet](#)

### Legend

Rank

0-113 114-149 150-202 203-262 263-604



## Aggregate Zip Data

Zips Selected: 95608,95841

Total Population is: 78866

Comparison County: **Sacramento**

ED Visits	cases/10,000	County	State
Asthma	288.5	214.90	134.90
COPD	451.4	318.10	202.30
Diabetes	240.38	257.40	188.40
Heart Disease	138.52	152.60	93.10
Hypertension	497.61	513.90	365.60
Mental Health	324.3	229.00	130.90
Injury - Assault	38.0	36.80	29.40
Injury - Self-Inflicted	15.8	12.00	7.90
Injury - Unintentional	810.9	728.20	651.80
Stroke	24.56	26.70	16.20
Substance Abuse	474.5	406.30	232.00

Mortality	cases/1,000	County	State
Alzheimer's	3.2	2.60	2.70
Cancer	27.0	16.00	14.30
Chronic Liver Disease	1.8	1.10	1.10
Diabetes	2.8	1.80	1.80
Heart Disease	27.6	12.40	11.50
Infant Mortality Rate	1.1	5.80	5.20
Influenza & Pneumonia	3.3	2.00	1.60
Injury Unintentional	3.3	3.40	2.70
Respiratory Disease	8.0	3.90	3.40
Stroke	5.8	3.90	3.50
Suicide	2.7	1.20	1.00

Hospitalization	cases/10,000	County	State
Asthma	119.8	100.80	70.40
COPD	257.7	195.30	156.80
Diabetes	187.60	198.80	190.90
Heart Disease	222.55	236.60	218.40
Hypertension	386.45	395.20	380.90
Mental Health	338.5	218.30	182.10
Injury - Assault	6.7	5.70	3.90
Injury - Self-Inflicted	7.0	5.00	4.30
Injury - Unintentional	235.5	174.30	154.60
Stroke	53.91	59.30	51.80
Substance Abuse	258.3	192.30	143.80

Health Indicators	% of Births	County	State
Low Birth Weight	6.37	6.80	6.80



## Data Dictionary

[2013 CHNA Secondary Data Analysis Methodology](#) (click to download)

**Age Adjusted Mortality:** The number of deaths per 10,000 people adjusted to match a standard age profile.

**Community Health Vulnerability Index (CHVI):** a community health-planning tool that identifies communities across a large area more vulnerable to poorer health outcomes. The index combines many of the social determinants of health, such as income level, insurance status, race & ethnicity, education, and housing, and identifies specific ZIP Codes across the region where poorer health outcomes are more likely to be found. The specific variables included in the index are as follows. Each variable is identified for each ZIP Code included in the map:

**Limited English:** Percentage of population over age 5 that speaks English poorly or not at all

**Minority:** Percentage of population that is minority (including Hispanic ethnicity)

**No high school diploma:** Percentage of population over 25 without a high school diploma

**Poverty 65+:** Percentage of households below poverty line, with the head of household age 65 or older

**Poverty children:** Percentage of families with children under 18 below poverty line

**Poverty single w/ kids:** Percentage of single female-headed families with children under 18 below poverty line

**Renting:** Percentage of households renting their home

**Unemployed:** Percentage of population in the labor force, ages 16 or more, without employment

**Uninsured:** Percentage of population without health insurance

**Emergency Department (ED) Visits:** Number of Emergency Department (ED) discharges; reported as a rate per 10,000 by primary or secondary diagnosis.

**Fact Sheet:** The printable one-page sheet that appears upon clicking on a zip code within the zip map.

**Hospitalizations:** Number of admittances into a hospital; reported as a rate per 10,000 by primary or secondary diagnosis.

**Infant Mortality Rate:** The number of deaths under 1 year of age divided by the total number of births; reported as cases per 10,000 births.

**Life Expectancy:** The number of years a person within a given population is expected to live at a given age; reported on this website as the age a person is expected to live from birth within a specific zip code.

**Low Birth Weight:** The total number of births with baby weight below 1500 grams divided by the total number of live births; reported as the number of cases per 10,000 births.

**Mortality:** The number of deaths in a given population; reported as a rate per 10,000 by disease.



## 2013 CHNA Reports



Download the 2013 reports in pdf format.

[Mercy Hospital of Folsom](#)

[Methodist Hospital of Sacramento](#)

[Mercy General Hospital](#)

[Mercy San Juan Medical Center](#)

[Woodland Healthcare](#)

[Sierra Nevada Memorial Hospital](#)

[Kaiser Permanente Roseville Medical Center](#)

[Kaiser Permanente Sacramento Medical Center](#)

[Kaiser Permanente South Sacramento Medical Center](#)

[Sutter General Hospital](#)

[Sutter Memorial Hospital](#)

[Sutter Center for Psychiatry](#)

[Sutter Davis Hospital](#)

[Sutter Amador Hospital](#)

[Sutter Roseville Medical Center](#)



## Links

### **The Four Hospital Systems**

[Dignity Health](#)

[Kaiser Permanente](#)

[Sutter Health Sacramento Sierra Region](#)

[UC Davis Health System](#)

### **Sacramento Region County Health Offices**

[Amador County](#)

[El Dorado County](#)

[Nevada County](#)

[Placer County](#)

[Sacramento County](#)

[Solano County](#)

[Sutter County](#)

[Yolo County](#)

[Yuba County](#)

### **Health and Health care Information**

[California Dept. of Public Health \(CDPH\)](#)

[California Health Interview Survey](#)

[Health Resources and Services Administration \(US Dept of Health and Human Services\)](#)

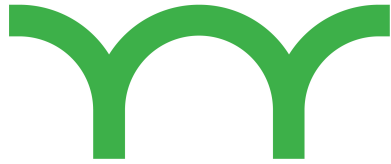
[Office of Statewide Health Planning and Development \(OSHPD\)](#)

[Centers for Disease Control and Prevention](#)

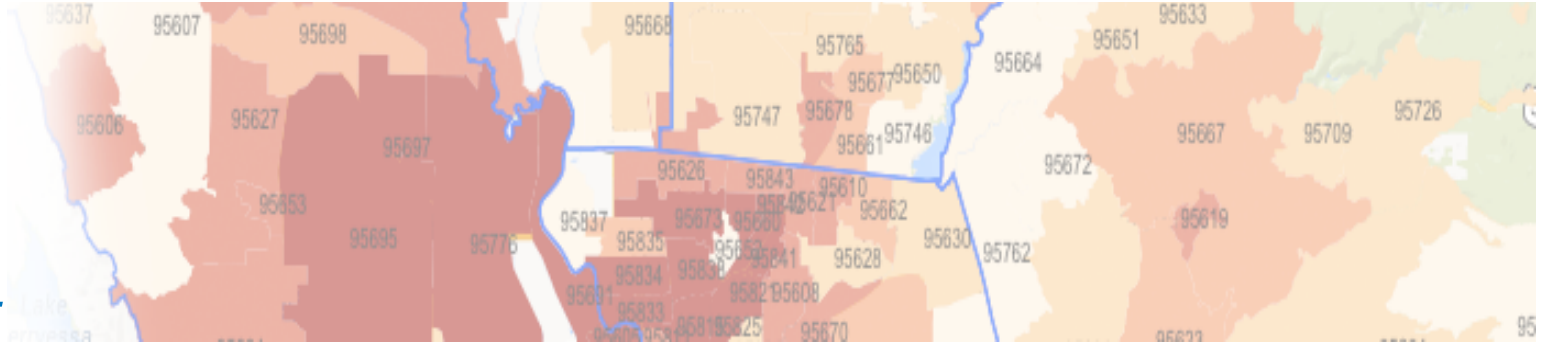
# How has the CHNA work advanced **Community Health & Economic Vitality?**

- Improve Knowledge (Community & Practitioners)
- Creation of Community Based Organizations (Understanding the Need)
- Influencing Policy (Health in All Policies)

**VALLEY VISION**



*Connect. Partner. Impact.*



# Comments / Questions

**Healthy Living Map**

<http://www.HealthyLivingMap.com>

**Bill Mueller**

**Valley Vision**

[bill.mueller@valleyvision.org](mailto:bill.mueller@valleyvision.org)

916-325-1630