

The Sustainable Groundwater Management Act and DWR's Role in Sustainable Groundwater Management

Building Livable Communities
March 2015

Paula J. Landis
CA Department of Water Resources



Outline

- Background and Problem
- Recent Actions
- SGMA
- DWR's Roles and Responsibilities
- Final Thoughts



Groundwater Storage

- Groundwater Basins carry 10 times the capacity of California's surface storage
- Cost-effective, local storage

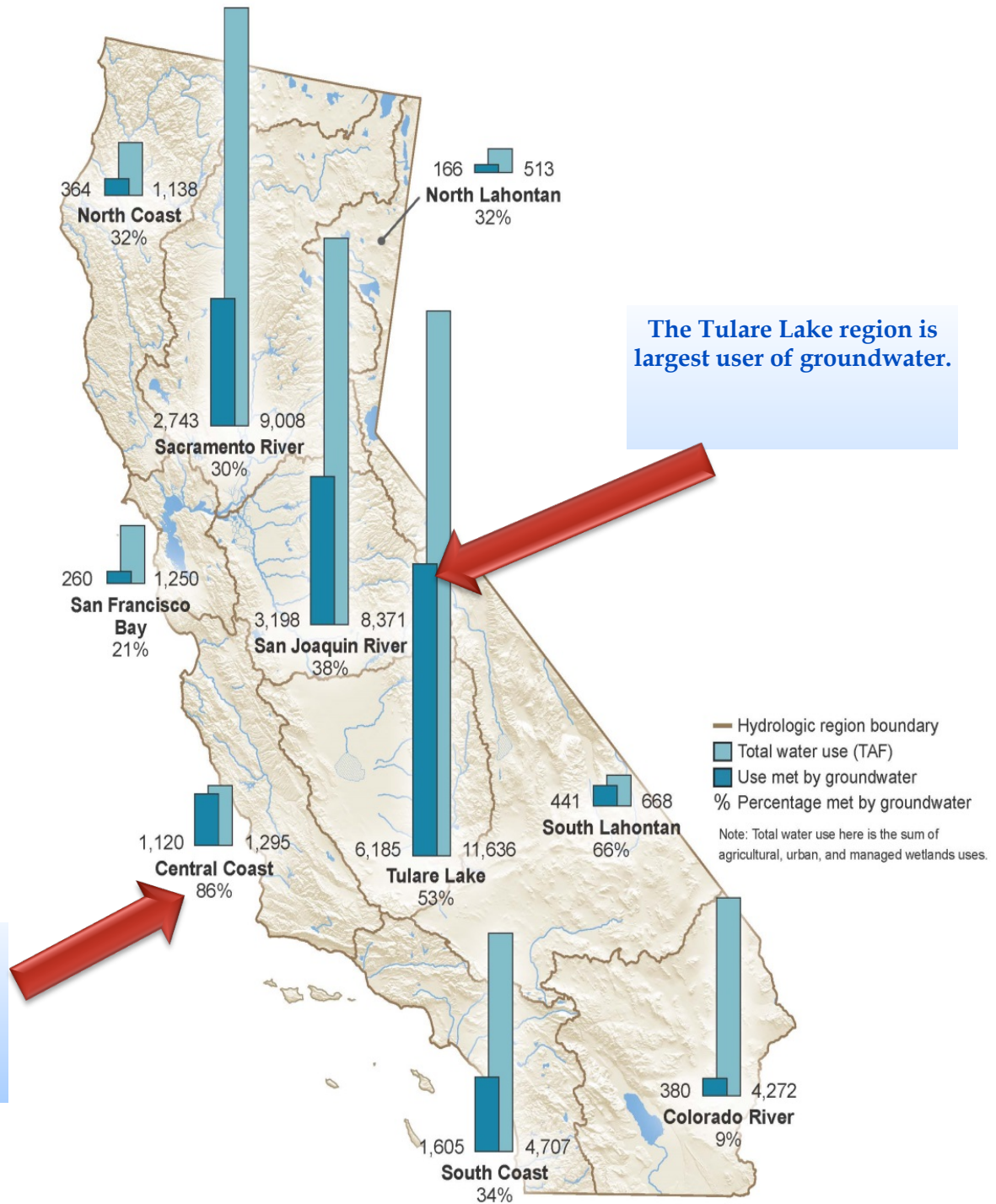


Ground-water Supply in California

2005-10 Average

The Central Coast region is the most groundwater dependent.

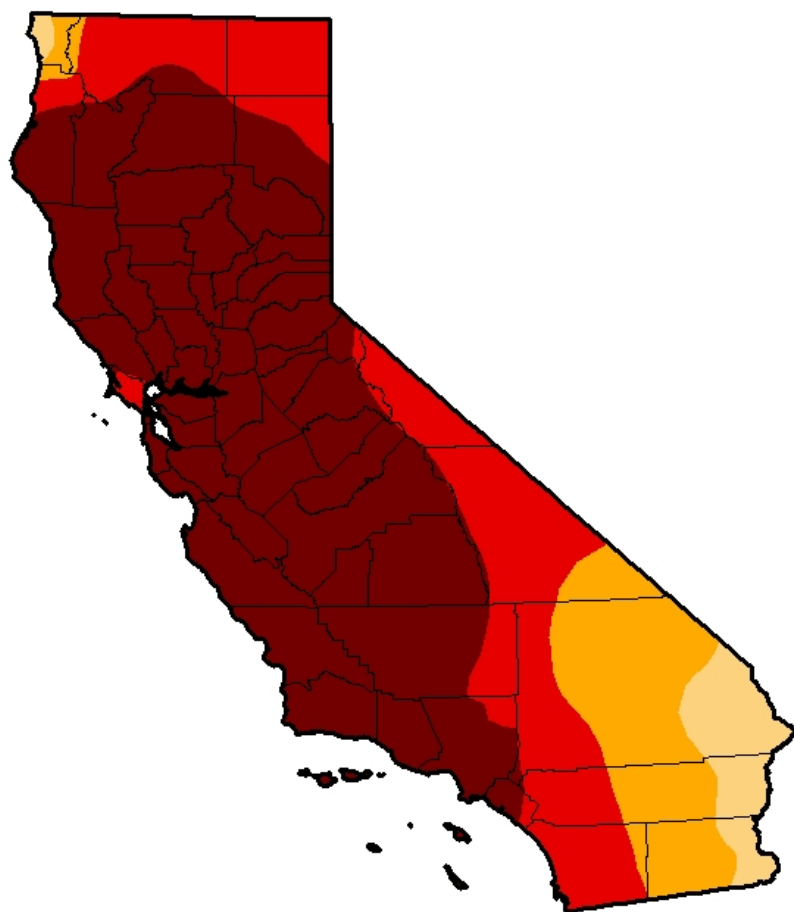
The Tulare Lake region is largest user of groundwater.



Most of CA in *Exceptional Drought Condition*

U.S. Drought Monitor California

October 7, 2014
(Released Thursday, Oct. 9, 2014)
Valid 8 a.m. EDT



Drought Conditions (Percent Area)

	None	D0-D4	D1-D4	D2-D4	D3-D4	D4
Current	0.00	100.00	100.00	95.04	81.92	58.41
Last Week 9/30/2014	0.00	100.00	100.00	95.04	81.92	58.41
3 Months Ago 7/8/2014	0.00	100.00	100.00	100.00	78.97	36.46
Start of Calendar Year 12/31/2013	2.61	97.39	94.25	87.53	27.59	0.00
Start of Water Year 9/30/2014	0.00	100.00	100.00	95.04	81.92	58.41
One Year Ago 10/8/2013	2.52	97.48	95.95	84.12	11.36	0.00

Intensity:



The Drought Monitor focuses on broad-scale conditions. Local conditions may vary. See accompanying text summary for forecast statements.

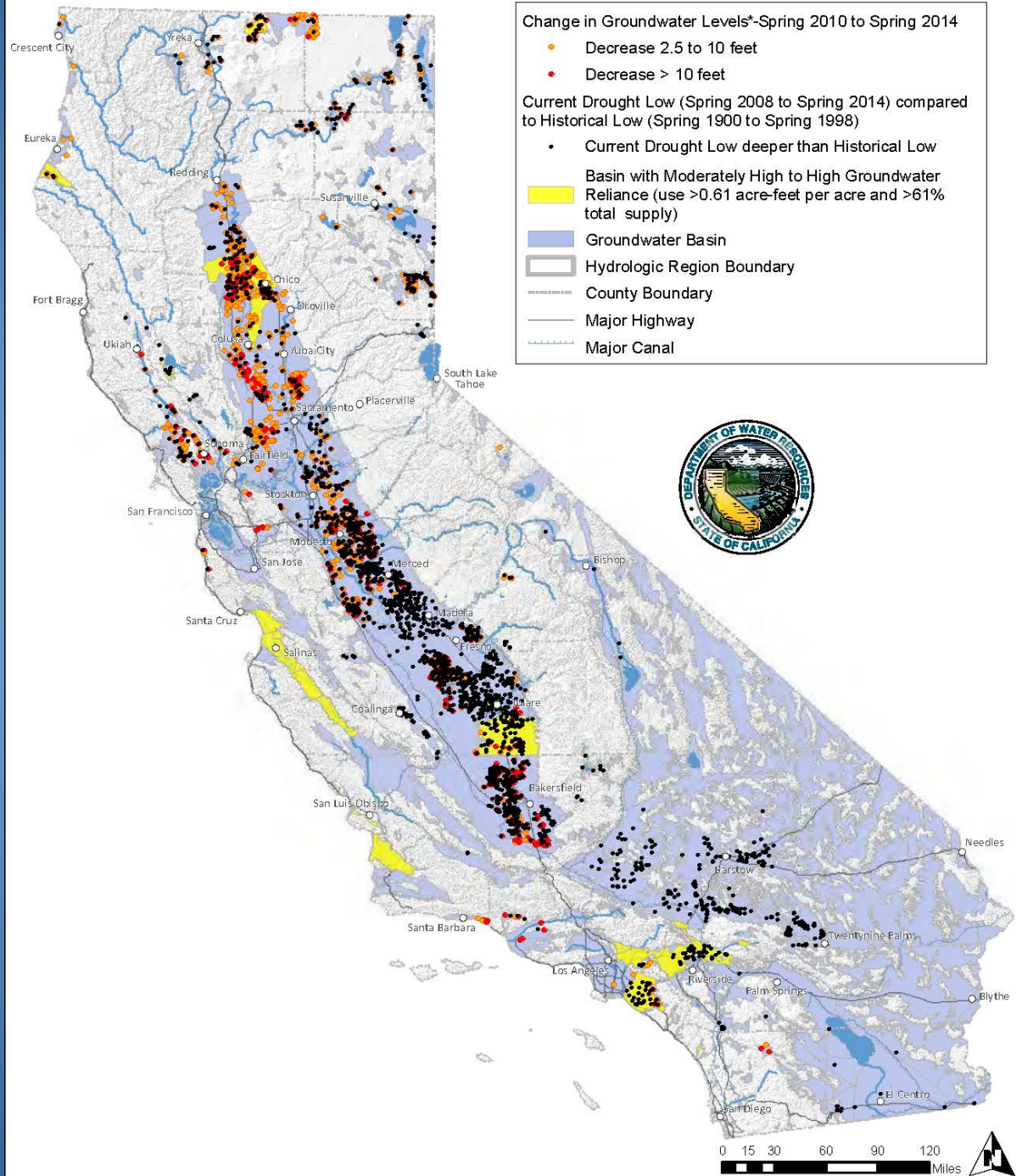
Author:
Mark Svoboda
National Drought Mitigation Center



<http://droughtmonitor.unl.edu/>

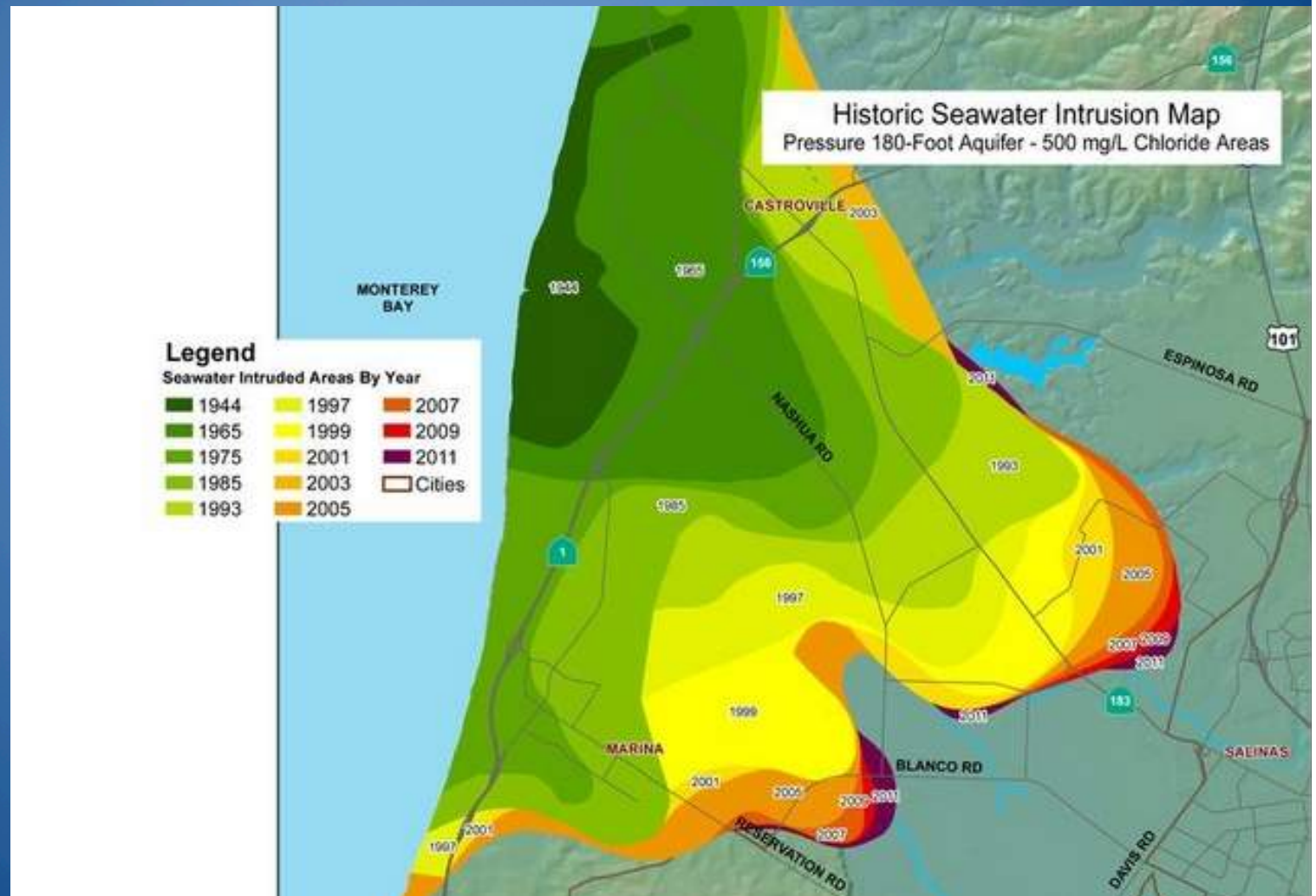


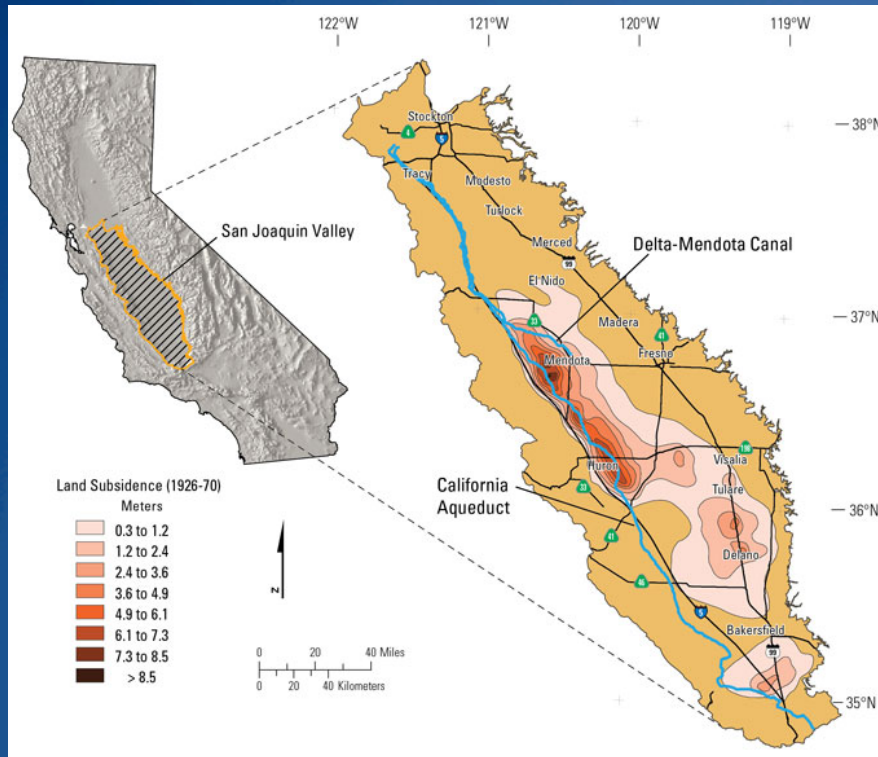
**Black Dots =
Groundwater Level
at Lowest Recorded**



Water Quality

- Seawater intrusion in coastal areas





Subsidence

- Permanent loss of water storage
- Damage to infrastructure and water delivery systems



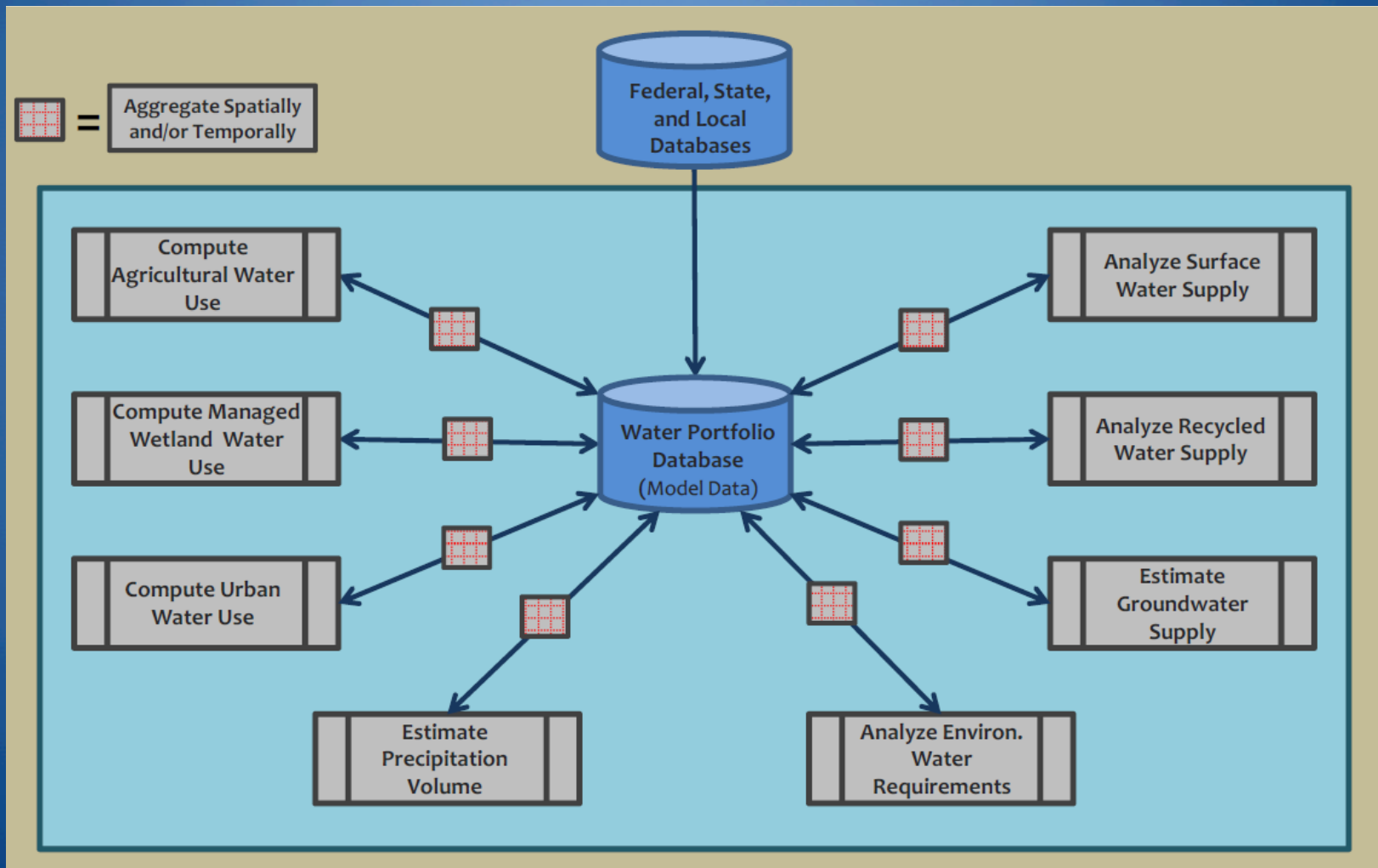
Ecosystem Impacts



Vital Resource Under Stress



Water Balance is essential for sustainability

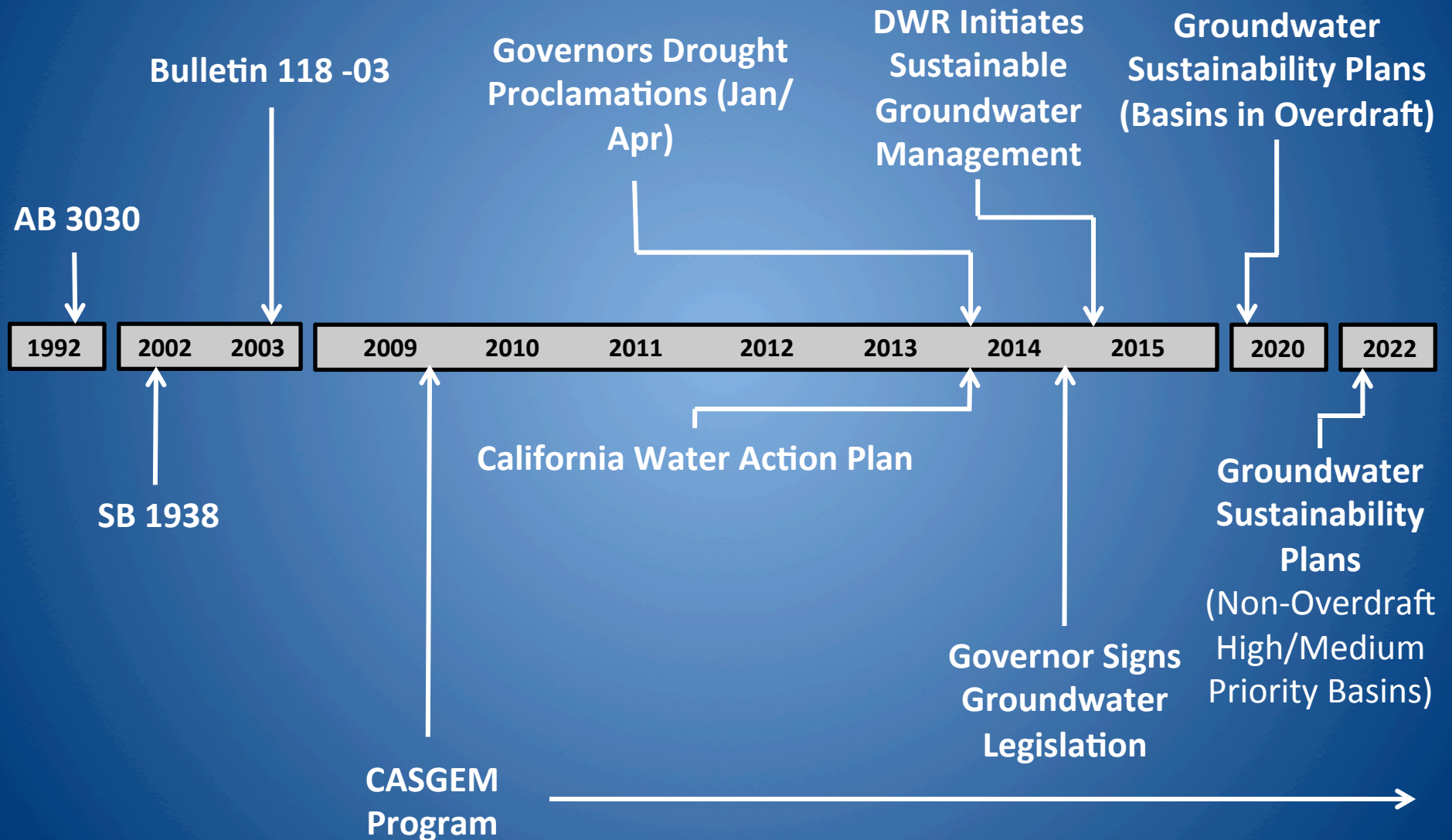


California Water Action Plan

Action 6: Expand water storage capacity and improve groundwater management



California's Major Milestones toward Sustainable Groundwater Management

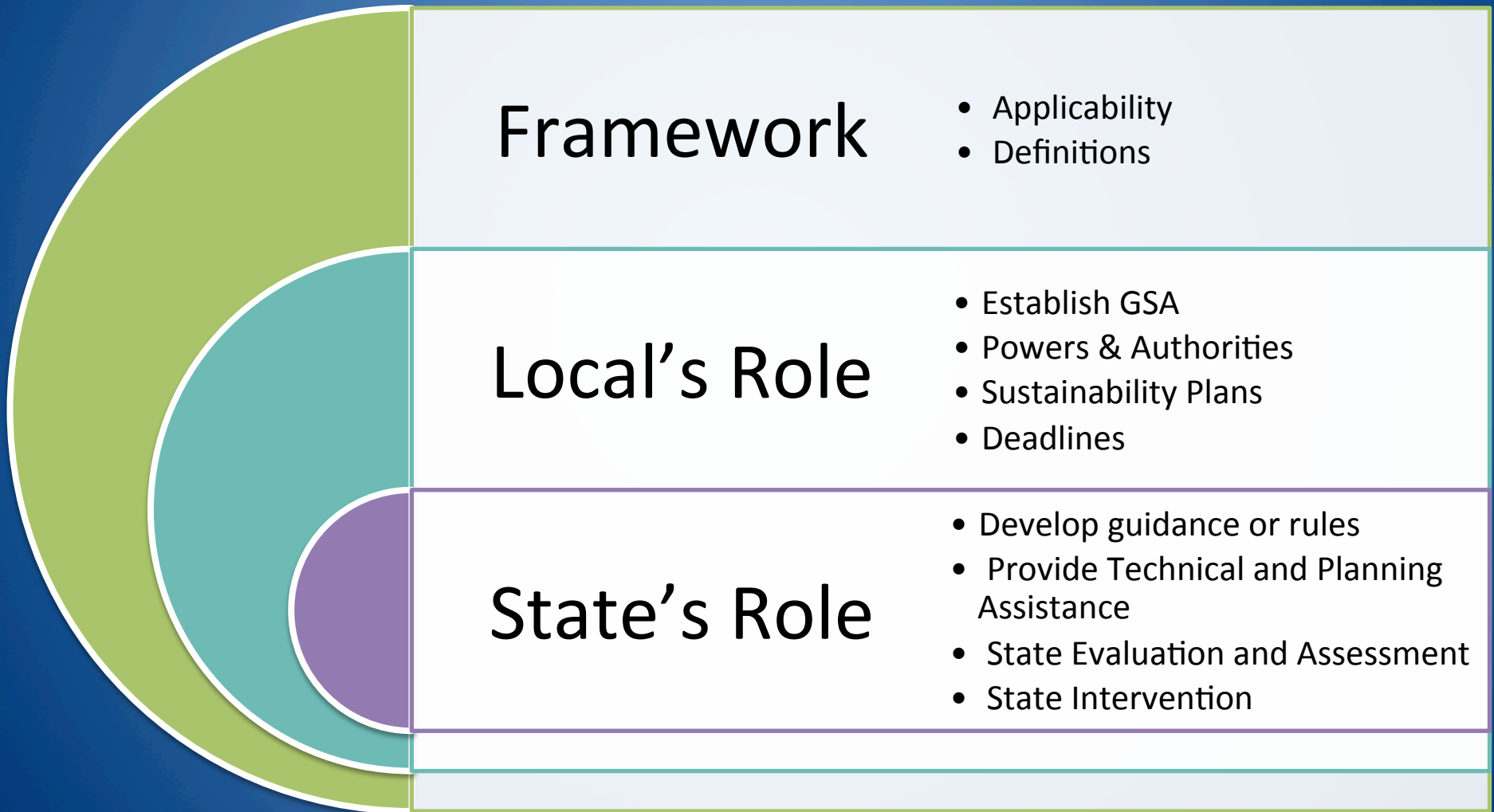


The Sustainable Groundwater Management Act of 2014

- Requires sustainable groundwater management
- Promotes local control

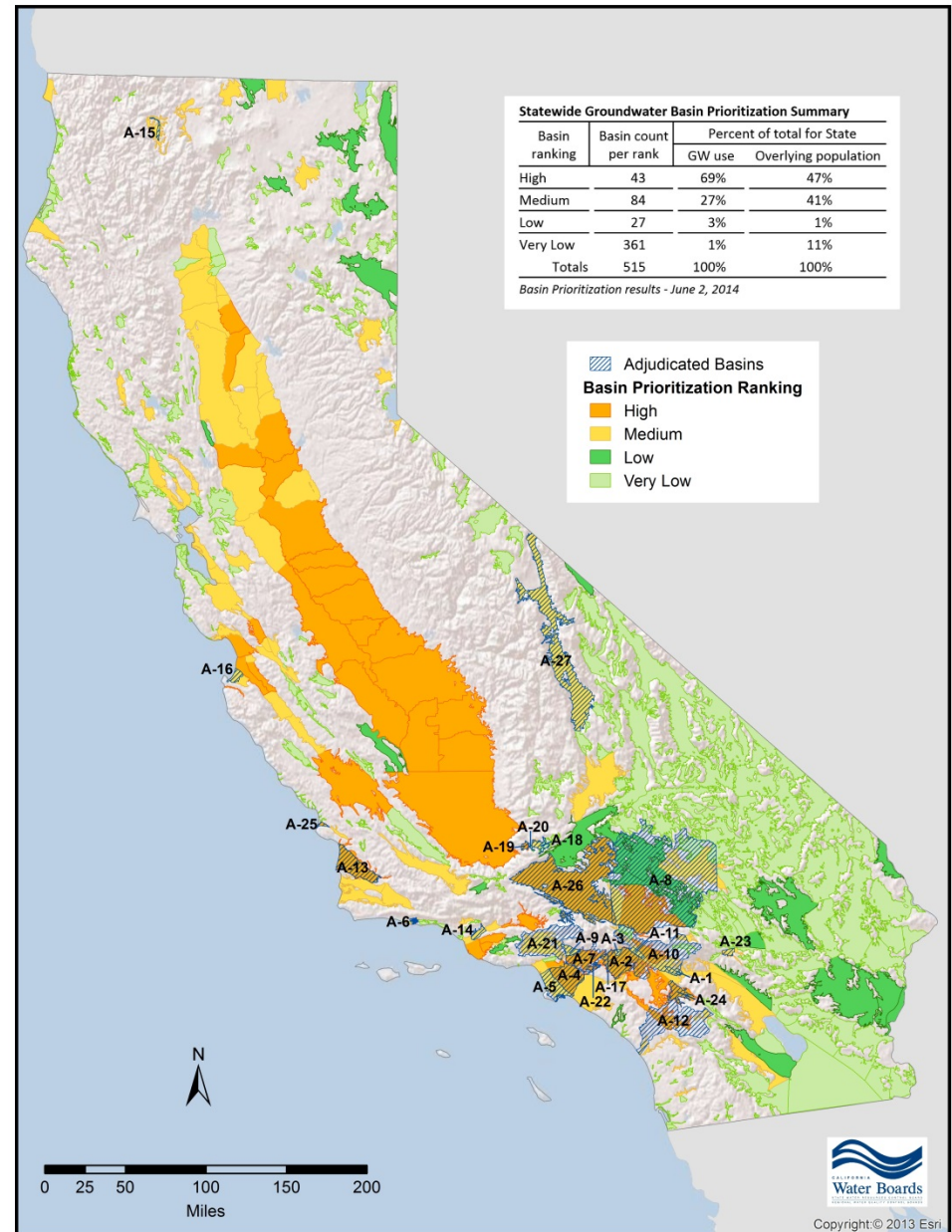


Sustainable Groundwater Management: Overview

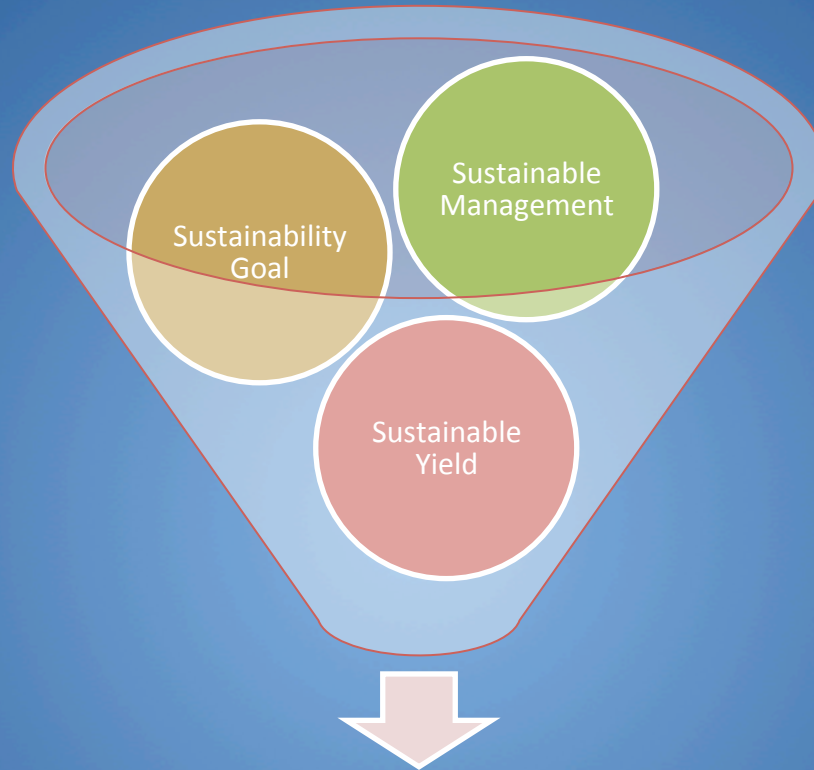


SGMA 2014

- Requires GW sustainability plans in high- and medium-priority basins
- GSA (Groundwater Sustainability Agencies)
- GSP (Groundwater Sustainability Plan)
- Defines time frame for accomplishing goals
- Does not require adjudicated basins



Sustainability:



**Prevent
“Undesirable Results”**

Lowering of
Groundwater
Levels

Reduction in
Groundwater
Storage

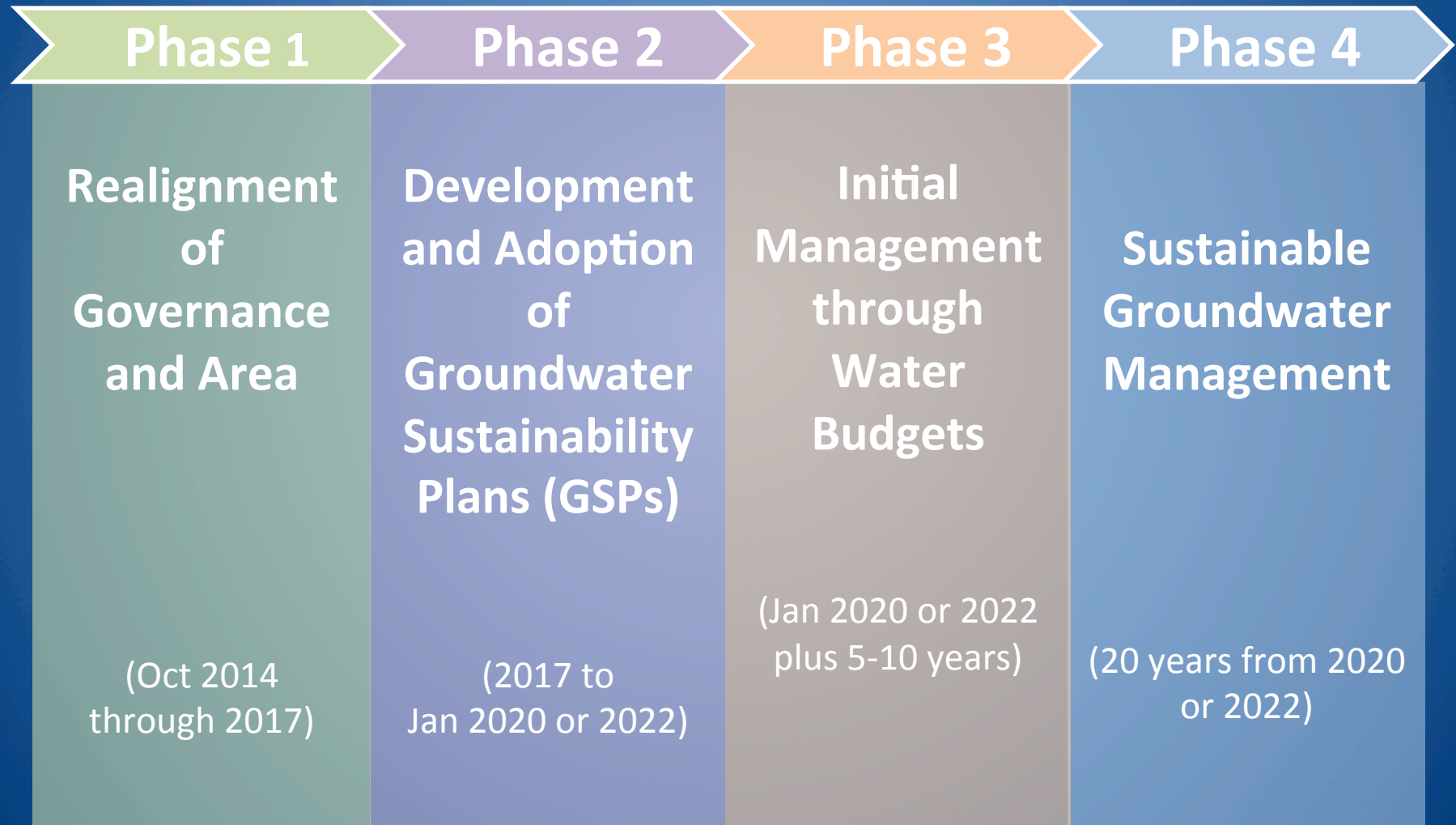
Seawater
Intrusion

Water
Quality
Degradation

Land
Subsidence

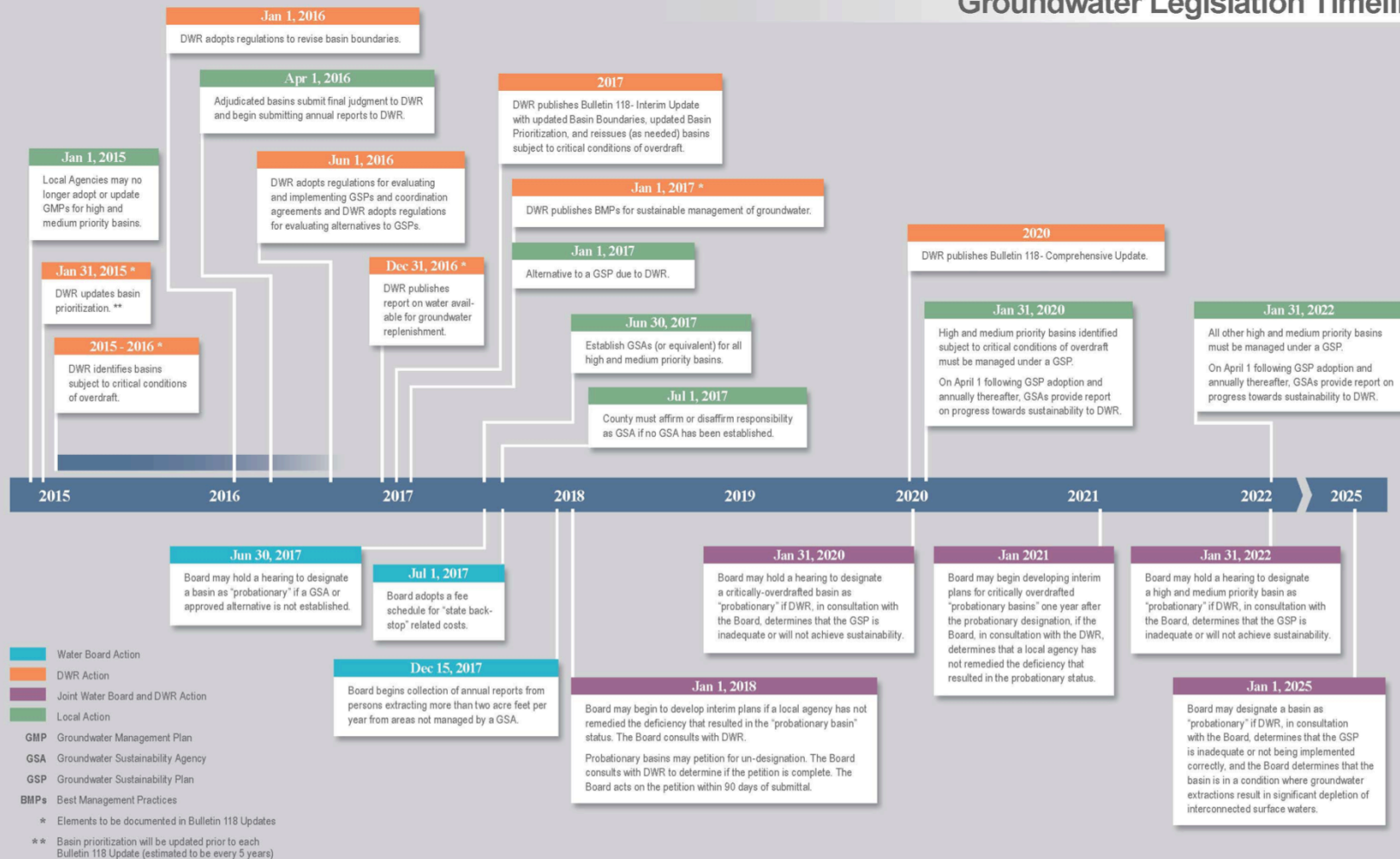
Depletions of
Surface
Water

Phases to Implement Groundwater Legislation and Achieve Sustainable Groundwater Management



Groundwater Legislation Timeline

Groundwater Legislation Timeline



Key Principles

- Groundwater is best managed at the local or regional level, and local agencies should have the tools they need to sustainably manage their resources
- When local or regional agencies cannot or will not manage their groundwater sustainably, the State will intervene until the local agencies develop and implement sustainable groundwater management plans

Communication and Outreach



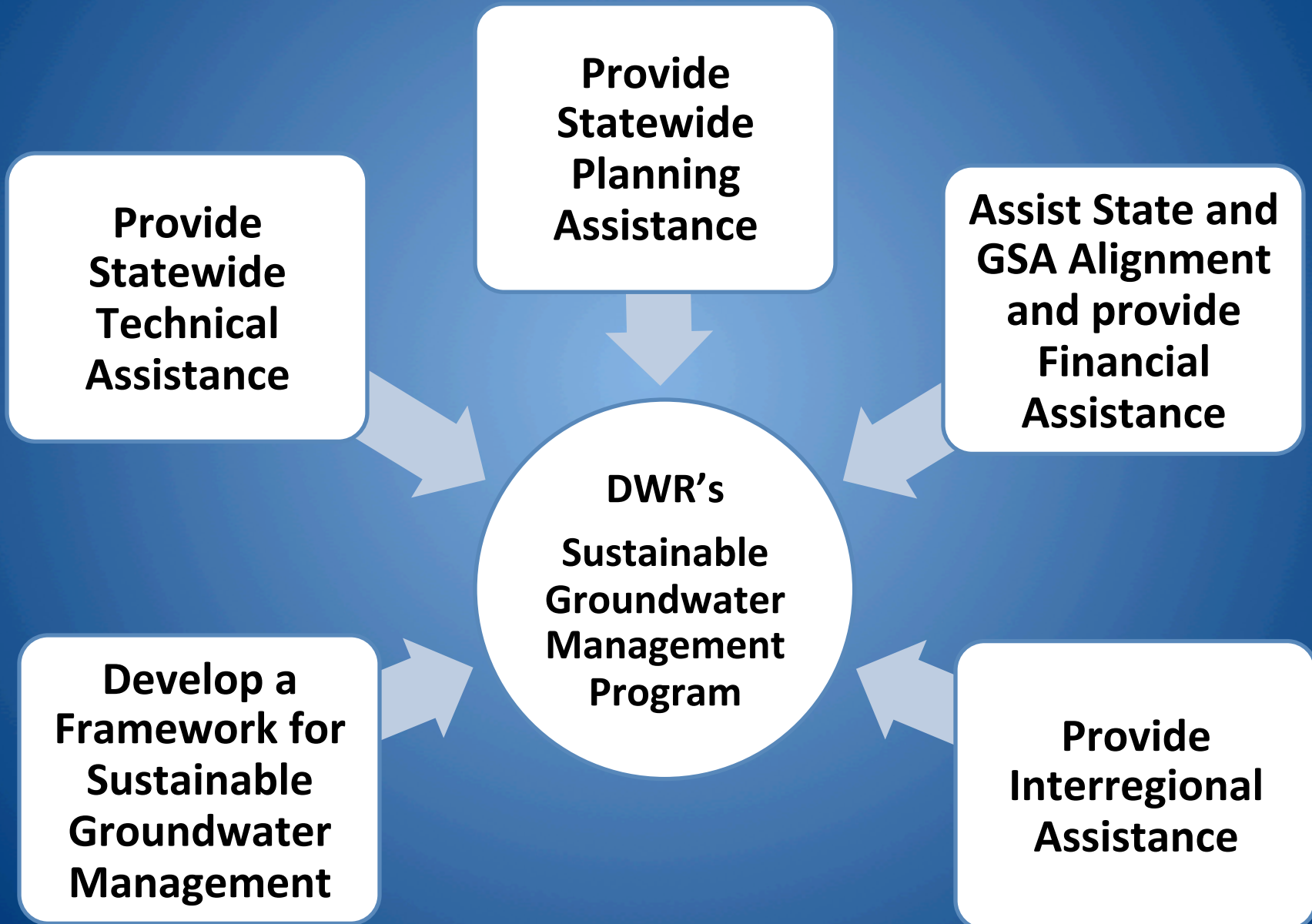
Communication

- **Joint Websites**
 - <http://www.water.ca.gov/cagroundwater/>
 - http://www.waterboards.ca.gov/water_issues/programs/gmp/
 - <http://www.water.ca.gov/groundwater>
- **Speaking Engagements**
 - 27 engagements since mid November
- **Brochures, Technical Fact Sheets**
- **Webinars**
- **Workshops**
- **Strategic Plan**
- **Assistance to local agency communication**

Outreach

- **SWRCB**
 - Management Team
 - Communication Team
 - Data Team
 - Regulations Team
- **Water Commission**
 - Sub Committee
- **Practitioners Advisory Panel**
- **Leveraging Organizations for Communication and Outreach**
- NGOs
- Federal Agencies and Tribal Governments
- Public Listening Sessions

DWR's Sustainable Groundwater Management Program



Immediate Actions

Developing
Regulations
for Basin
Boundaries

Updating
Basin
Prioritization

Identify
basins
subject to
conditions of
critical
overdraft

Developing
Regulations
for
Groundwater
Sustainability
Plans



Questions

When properly managed, groundwater resources will help protect communities, farms, and the environment against the impacts of prolonged dry periods and climate change.

California Water Action Plan 2014



State: <http://groundwater.ca.gov>

DWR: <http://www.water.ca.gov/groundwater/>

SWRCB: http://www.waterboards.ca.gov/water_issues/programs/gmp/

