

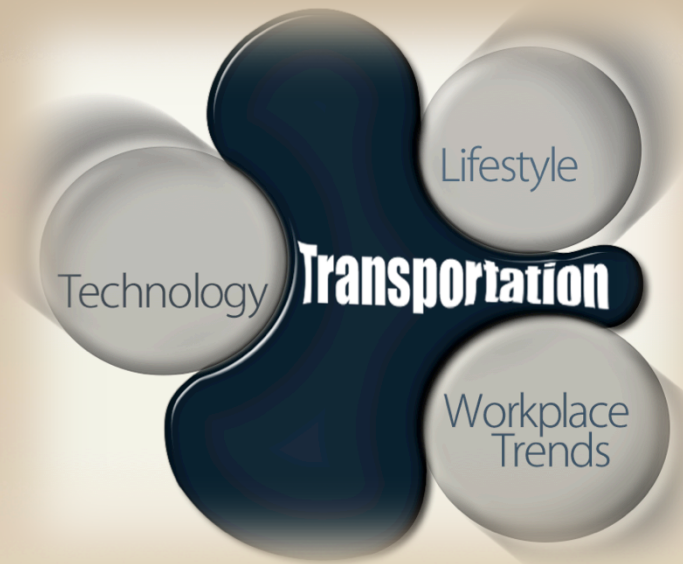
# ***New Mobility: The Next Transportation Frontier***

**24<sup>th</sup> Annual Ahwahnee Conference for Elected Officials**

Hasan Ikhata, Executive Director  
March 21, 2015



# Our Goals Today



- What are the recent **demographic trends** shaping our region/our state?
- How will **emerging technological innovations** coupled with changing demographics affect our future transportation choices?
- How can MPOs in partnership with local governments address these issues in their **Regional Transportation Plans / Sustainable Communities Strategies (RTP/SCS)**?



# SCAG Region



## SCAG FACTS ▶

191  
Cities  
—  
6  
Counties

18.5  
Million  
People

16th  
Largest  
Economy  
in the  
World

- Nation's largest Metropolitan Planning Organization (MPO)
- 38,000 Square Miles
- 15 Subregions
- Nation's Global Gateway for Trade

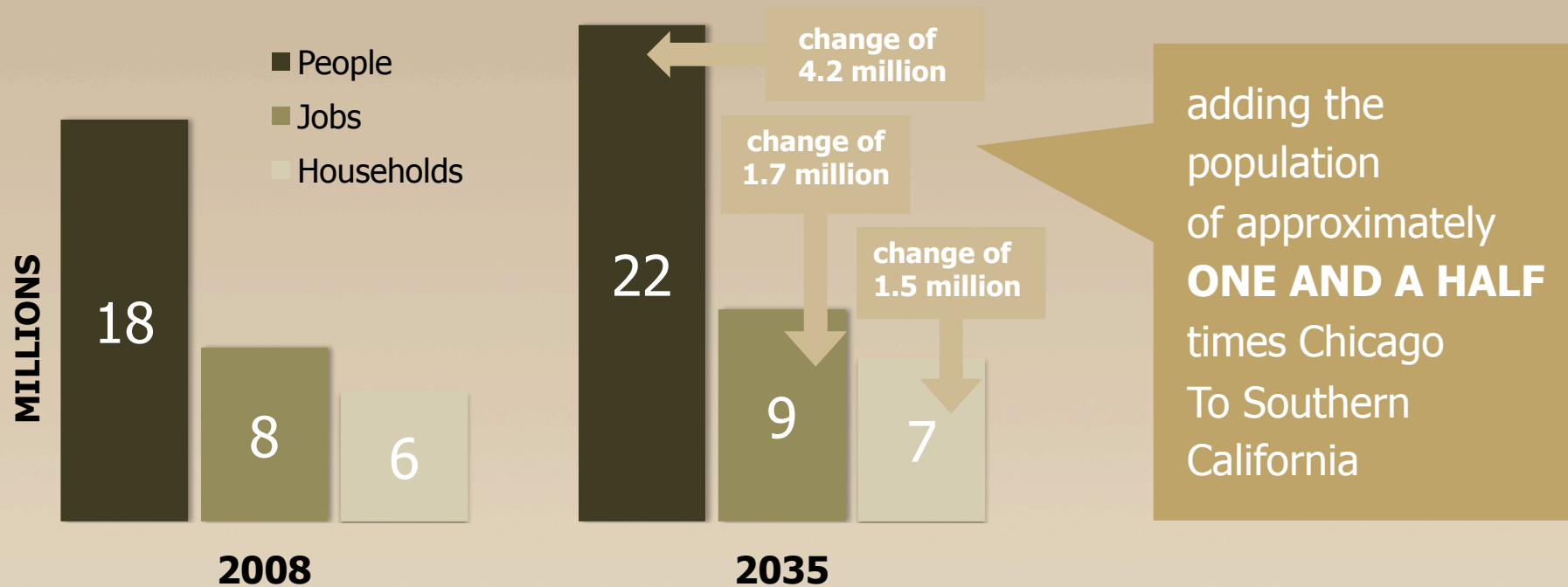
# Regional Challenges



# Major Demographic Trends

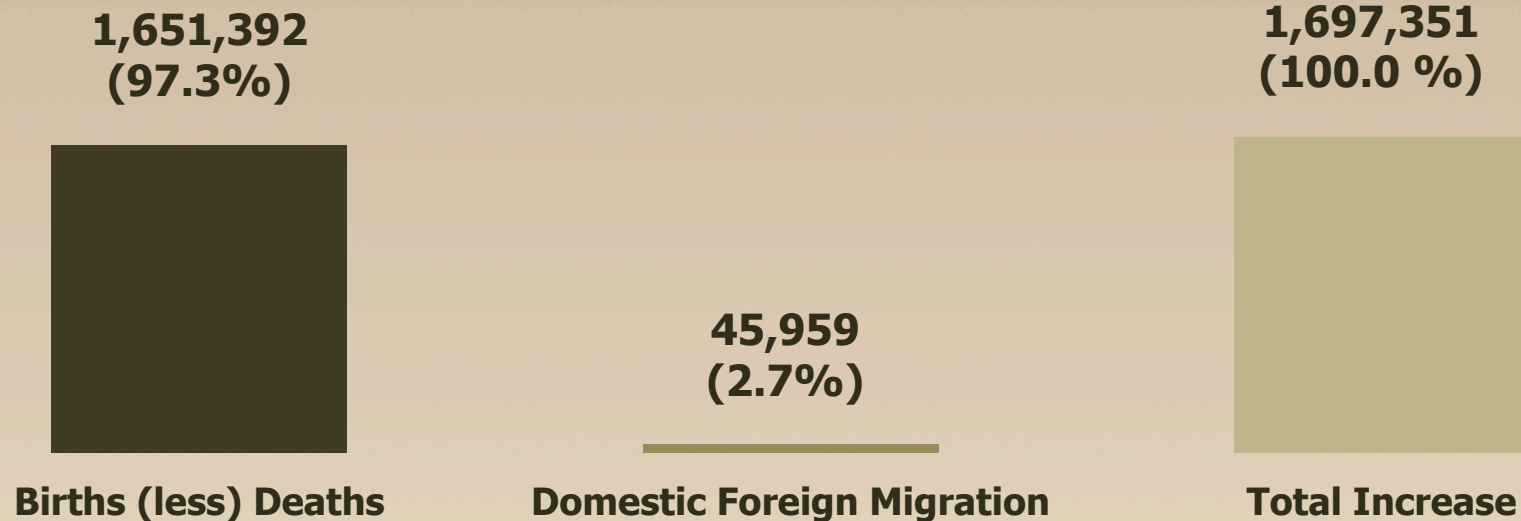
- Continued Low Population Growth
- Declining Number of Children
- Annual Flow of New Immigrants is Plunging
- Foreign Born Peaked or Declining
- Long Settled Foreign Born
- Rise of the Immigrant Second Generation
- Slower Racial and Ethnic Change
- A Soaring Senior Ratio
- The Homegrown (growth from native Californians) Revolution
- Rising Index of Children's Importance

# Projected Future Growth



# Where is Population Growth Coming From?

## Southern California Sources of Population Growth, 2000-2010

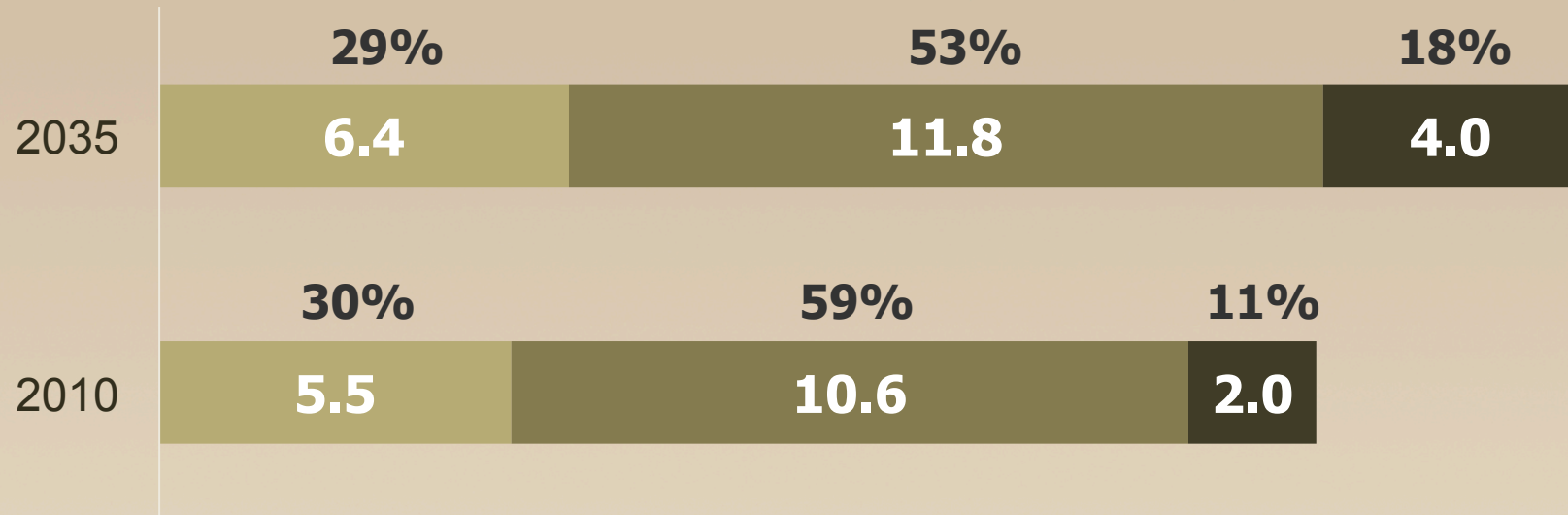


Source: State of California, Department of Finance, County Population Estimates and Components of Change by Year

# Population Shifts by Age Cohort

## Population by Age Group (in millions)

■ 0-20 ■ 21-64 ■ 65+



*Note:* Percentages do not add to 100% due to rounding  
*Source:* US Census Bureau, SCAG

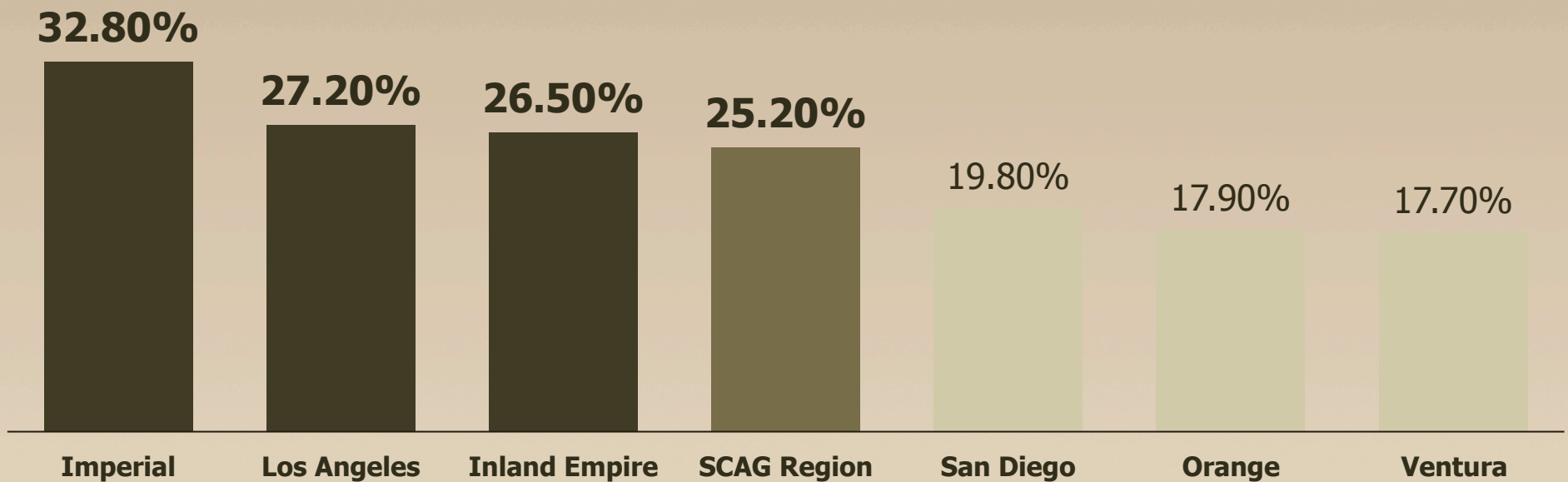


# Implications of Changing Demographics

- Increased demand for **housing choices** in central cities and mixed communities with shopping, health services, church and transportation options
- **Surplus of large-lot homes** and increased demand for small lot homes
- Increased **demand for health care and social services**
- Downward pressure on **tax revenues**
- Changing **transportation preferences**

# Much of Our Future Workforce is Living in Poverty

Share of Children Under 18 Living in Poverty for California Areas, 2012



Source: U.S. Census Bureau, American Community Survey, 2012

# Median Household Income



# California Education Levels Bachelor's Degree or Higher

43.5%



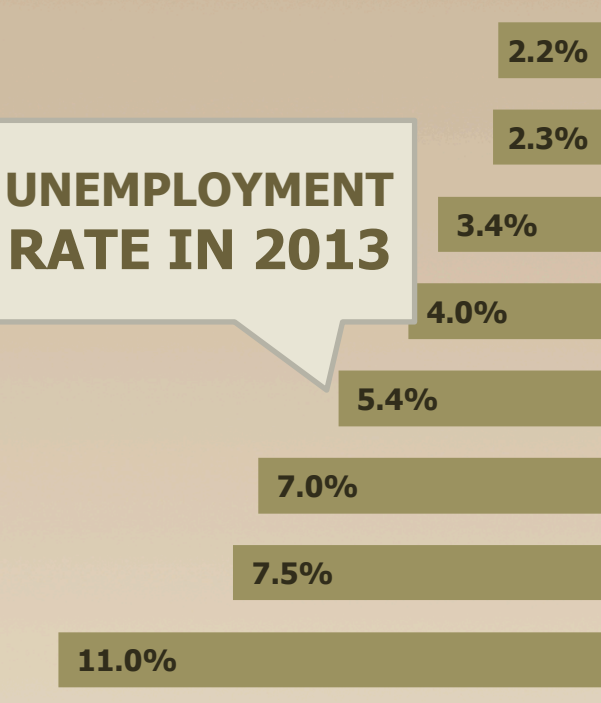
29.0%



# From Poverty to Prosperity:

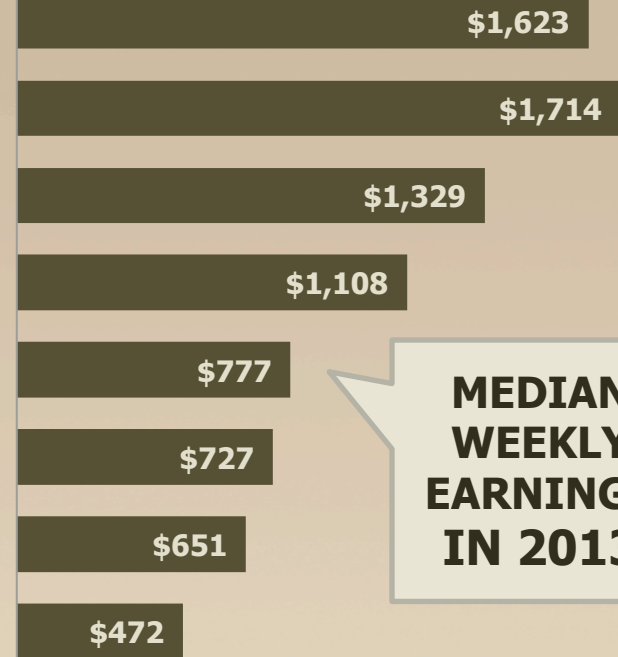
## Increasing Pathways to Jobs & Opportunity

### UNEMPLOYMENT RATE IN 2013



**ALL WORKERS: 6.1%**

DOCTOR'S DEGREE  
PROFESSIONAL DEGREE  
MASTER'S DEGREE  
BACHELOR'S DEGREE  
ASSOCIATE'S DEGREE  
SOME COLLEGE, NO DEGREE  
HIGH SCHOOL DIPLOMA  
LESS THAN A HIGH SCHOOL DIPLOMA



### MEDIAN WEEKLY EARNINGS IN 2013

**ALL WORKERS: \$827**

# 2012-2035 RTP/SCS

## A Job Creation Engine

**In April 2012, SCAG unanimously adopted the its first RTP that includes a Sustainable Communities Strategy that:**

- Invests nearly \$525 billion over the next 25 years to upgrade the region's transportation system
- Was developed through a bottoms-up local input process with unprecedented public outreach and stakeholder involvement
- Reduces per capita GHG emissions 9% by 2020 and 16% by 2035





# 2016 RTP/SCS: Policy Challenges, Opportunities & Emerging Trends



## 2016 RTP/SCS Emerging Trends & Opportunities

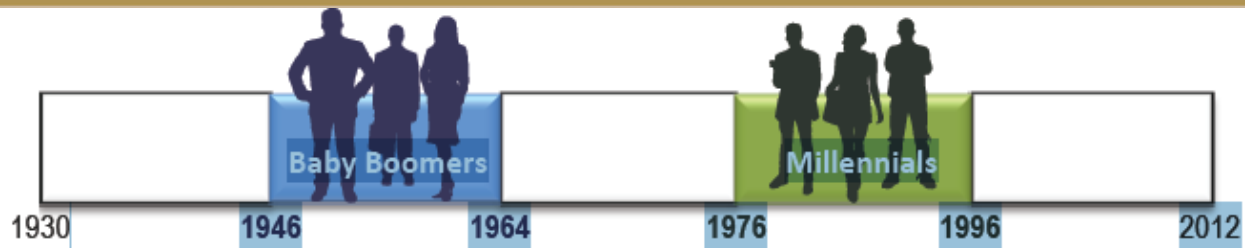
### What About the Millennials?



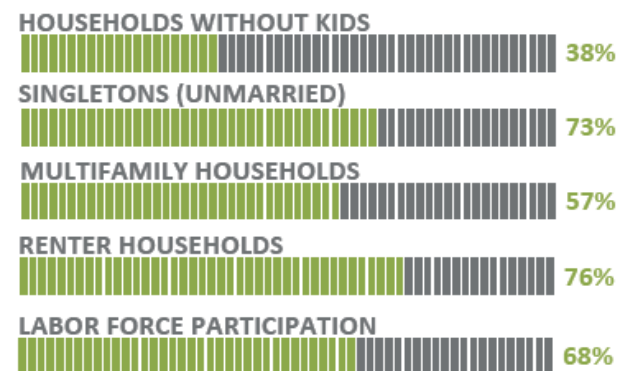
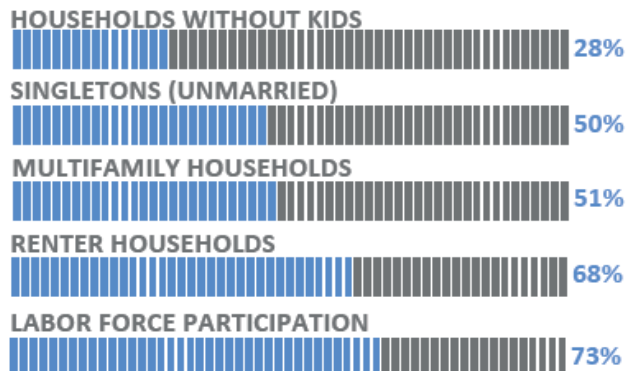
- Rapid adoption of new communication technologies
- Travel fewer miles and make fewer trips
- Less interested in car and house ownership
- Rapidly adopting to the "shared" economy
- Favor towards low-travel urban lifestyles with emphasis on walking, cycling, ride-sharing and transit



# Millennials Compared to Baby Boomers



## HOME AND WORK LIFE



# Changing Attitudes

## “Either/Or”

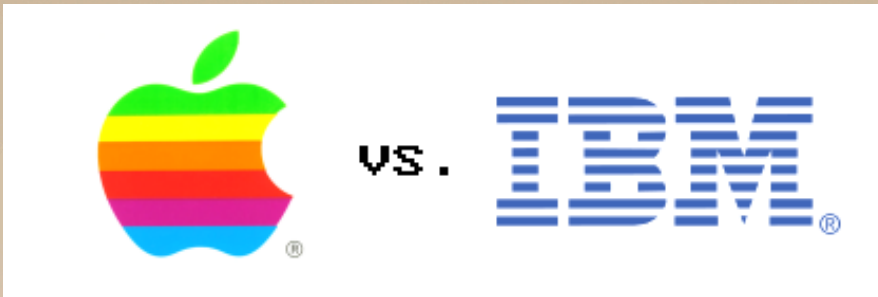
New Mobility Opportunities

- Boomer's and Gen X grew up with big corporations battling over competing products for market dominance.

## Open Source

- Millennials have experienced an open source world where products are available on many platforms, and the battle is for growing market share.

# Changing Attitudes to Lifestyle Choices... then.





# Changing Attitudes to Lifestyle Choices... now.



# Changing Attitudes to Transportation Choices...then.



# Changing Attitudes to Transportation Choices...then.





# Changing Attitudes to Transportation Choices...then.



# Changing Attitudes to Transportation Choices...now.

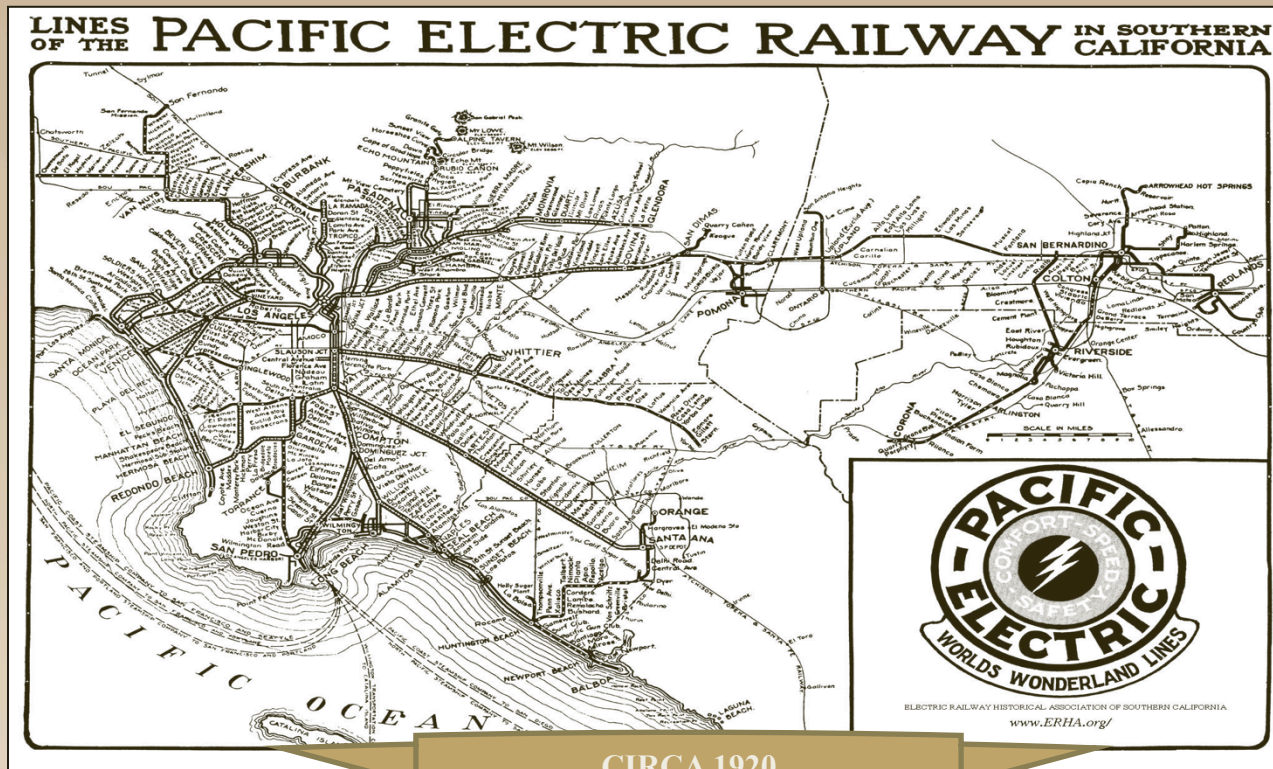


# Changing Attitudes to Transportation Choices...now.



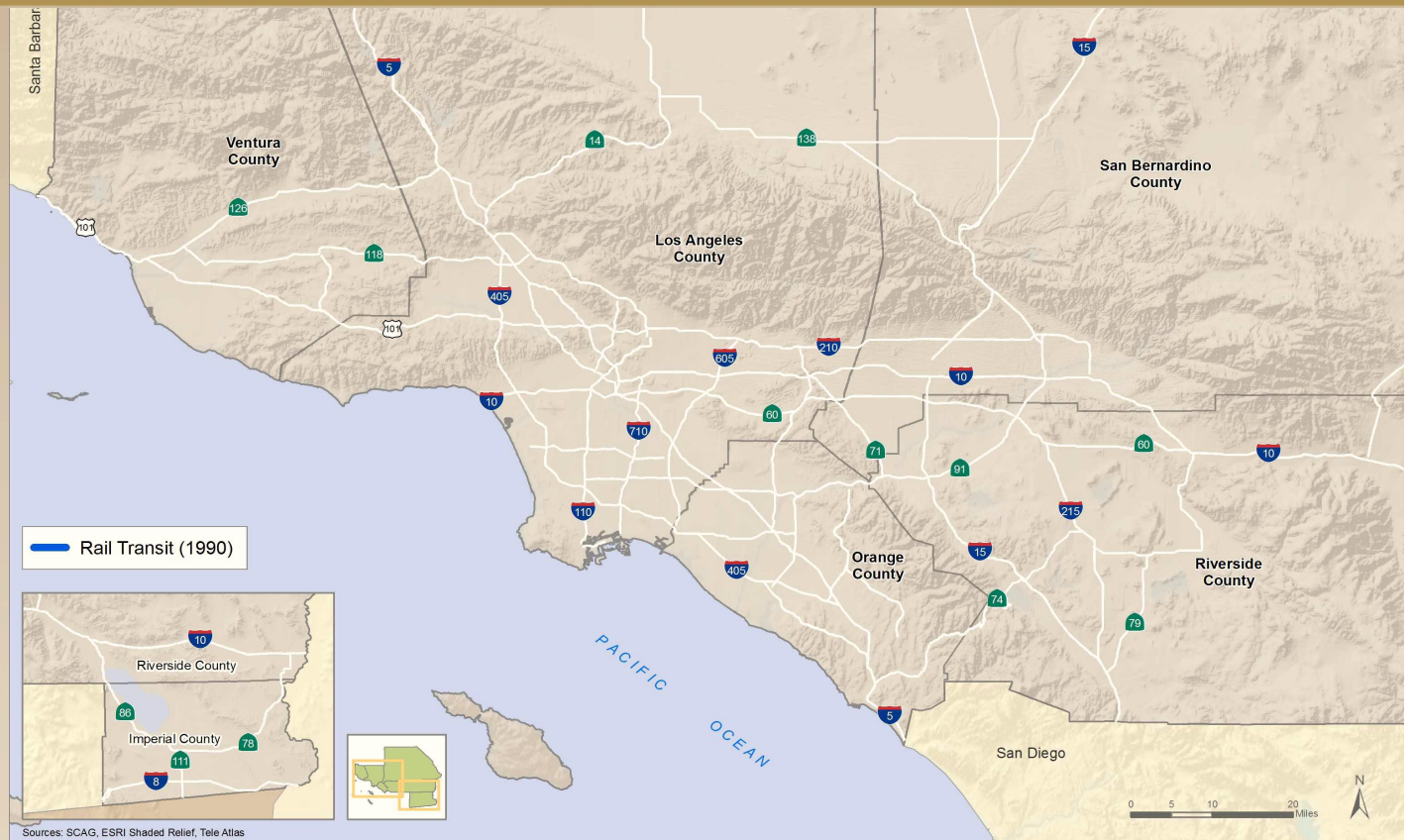


# 2016 RTP/SCS: Policy Challenges, Opportunities & Emerging Trends



# Passenger Rail in Southern California

1990

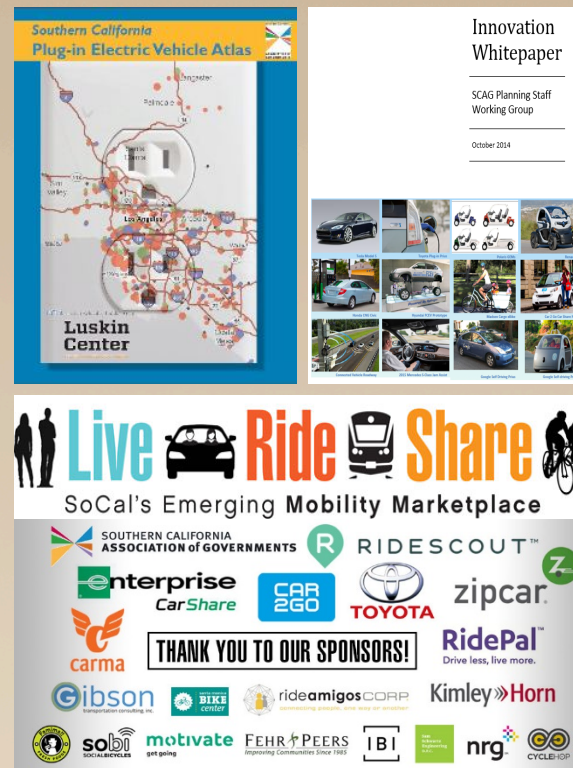






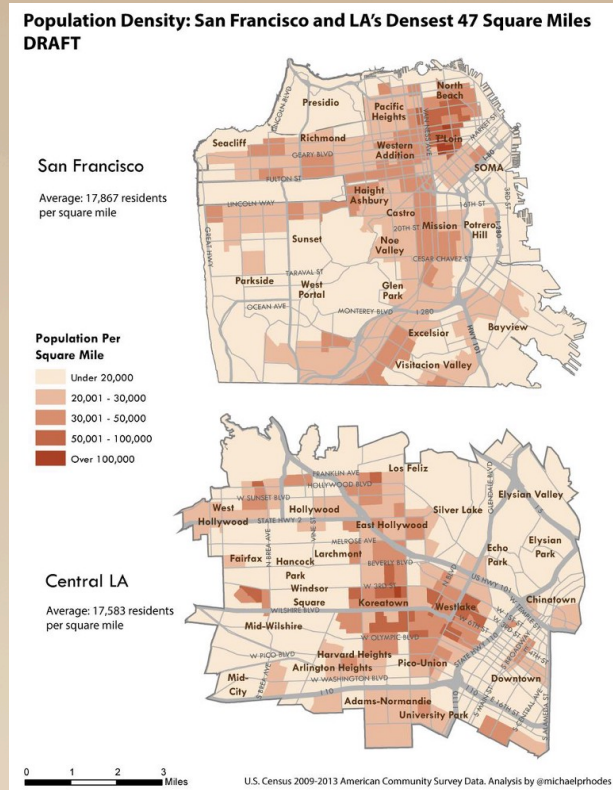
# Understanding New Mobility

- Researching data collection & modeling practices in key areas:
  - Alt Fuel Vehicles
  - New Mobility Services
  - Short Trip Replacement
  - Bus Transit Livable Corridors



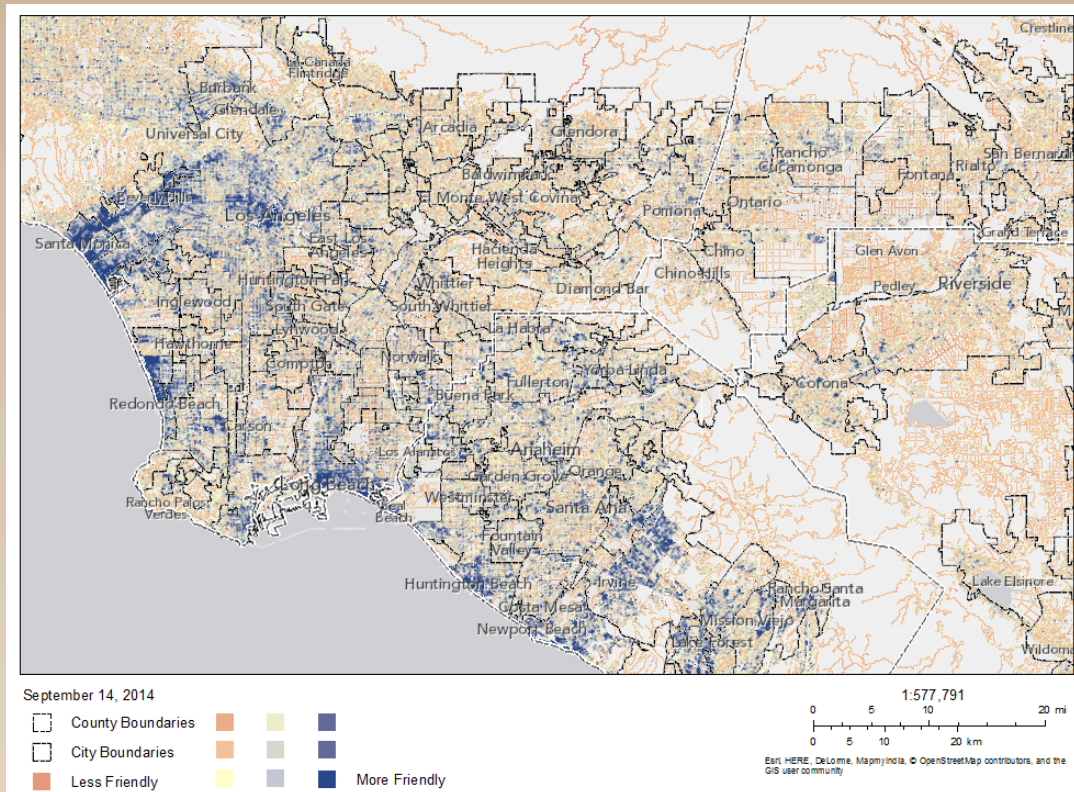
# Understanding New Mobility

- Many areas of SCAG region have the levels of density that support higher transit use



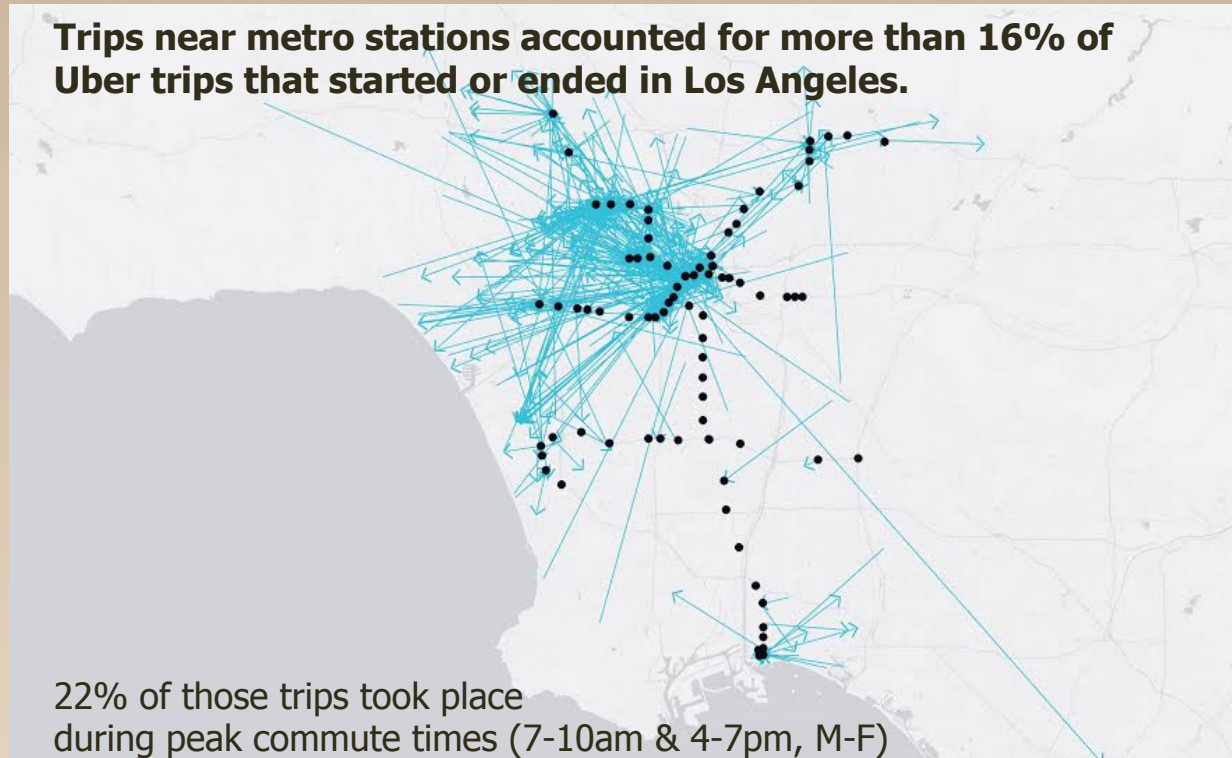


# Understanding New Mobility



# Understanding New Mobility

**Trips near metro stations accounted for more than 16% of Uber trips that started or ended in Los Angeles.**



22% of those trips took place during peak commute times (7-10am & 4-7pm, M-F)

# Understanding New Mobility





# 2016 RTP/SCS Emerging Trends & Opportunities

## Transportation Technologies



- Neighborhood Electric Vehicles (NEVs)
- Urban Mobility Platforms
- eBikes
- Car/Bike Sharing
- Travel Planning Apps
- Connected Vehicle Technologies
- Semi-automated drive modes
- Adaptive Cruise Control
- Lane centering
- Fully Autonomous Vehicles

## 2016 RTP/SCS: Complete Streets Strategies

The Award Winning Ocean Park Boulevard project demonstrates how streetscape improvements can reconnect a neighborhood divided by a major auto-oriented street to become a sustainable complete street.



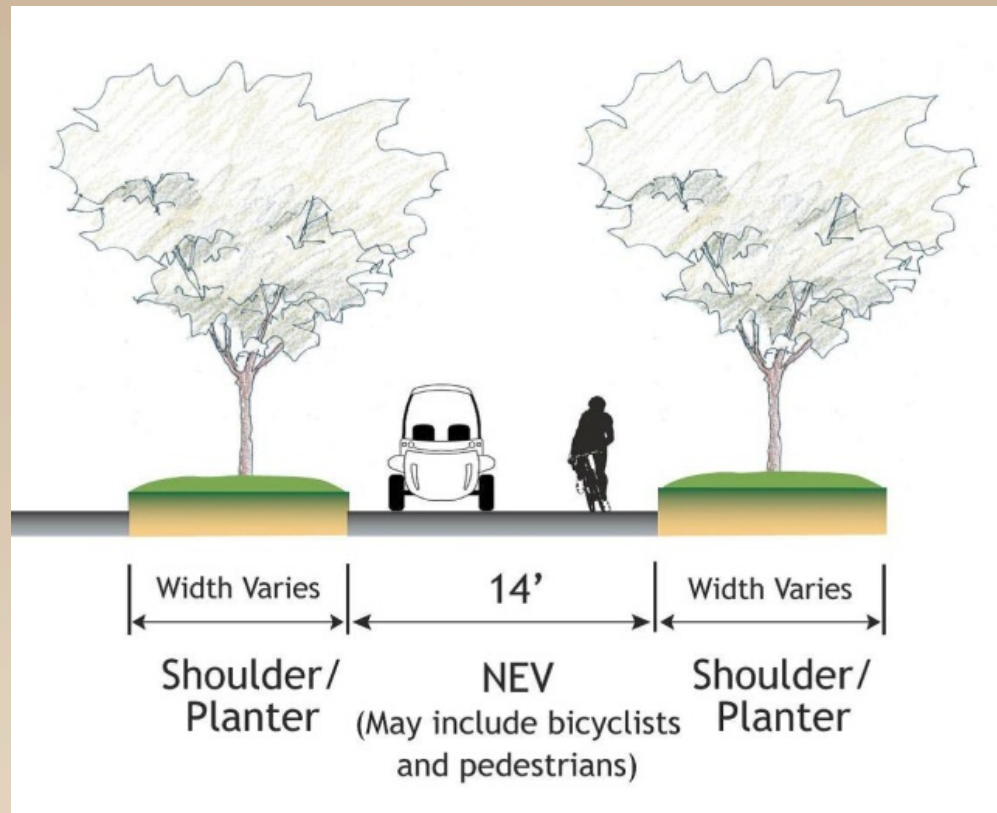


# 2016 RTP/SCS: Active Transportation

- **\$200 M** awarded for first 3 years of Active Transportation Program (ATP)
- More than **100 CITIES** in the SCAG Region applied for ATP funds
- SCAG Regional Safety & Encouragement Campaign **\$2.3 M** to improve safety & encourage biking/walking



# 2016 RTP/SCS: Neighborhood Electric Vehicles & Low Speed Lanes

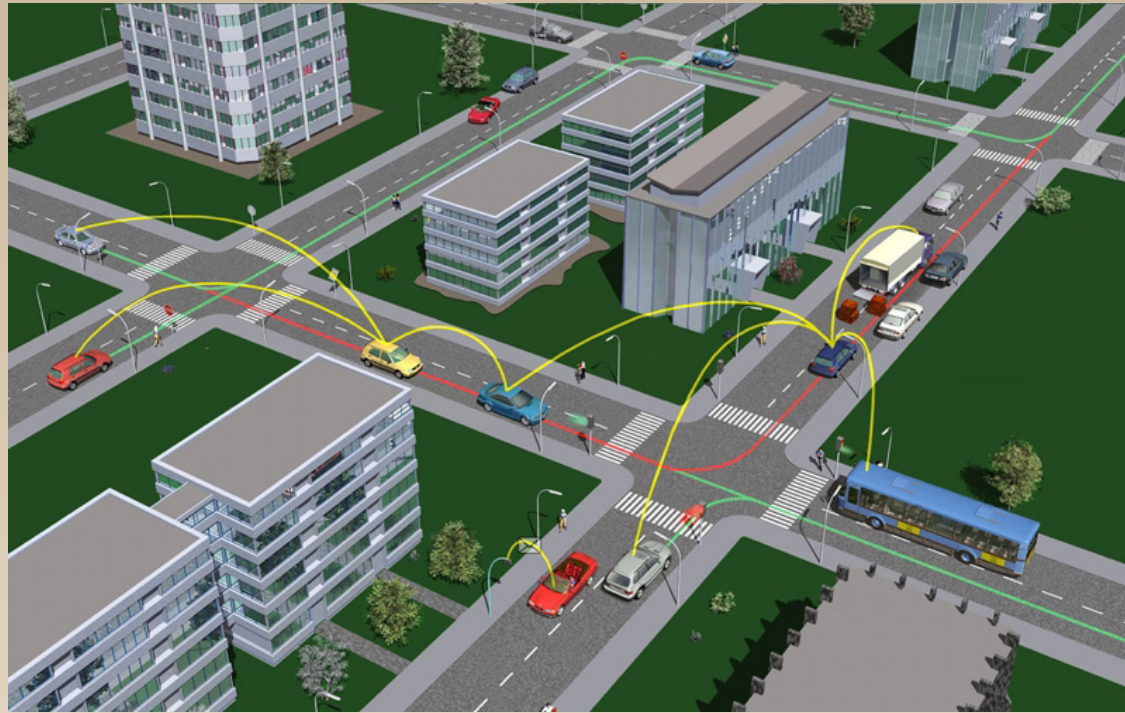


# 2016 RTP/SCS: Transportation Network Companies & Car Sharing





# 2016 RTP/SCS: Travel Planning Applications & Connected Vehicle Technology



# 2016 RTP/SCS: Alternative Fuel Vehicles & Charging Infrastructure

- Plug-in Electric Vehicles (PEVs)
  - Battery Electric
  - Plug-in Hybrids
- Natural Gas
- Hydrogen Fuel Cell Vehicles





# 2016 RTP/SCS: Automated and Semi-Automated Vehicles

Semi-automated drive modes already on the road:

- Self parking
- Adaptive Cruise Control
- Lane centering
- Stop-and-go driving capability



# The Future...



# The Future...



# DISCUSSION

For more information visit [www.scag.ca.gov](http://www.scag.ca.gov)

