

R. Rex Parris

Mayor, City of Lancaster

lancaster
it's positively clear



**Reaching
farther than we
can see.**







“The concept of global warming was created by and for the Chinese in order to make U.S. manufacturing non-competitive.”

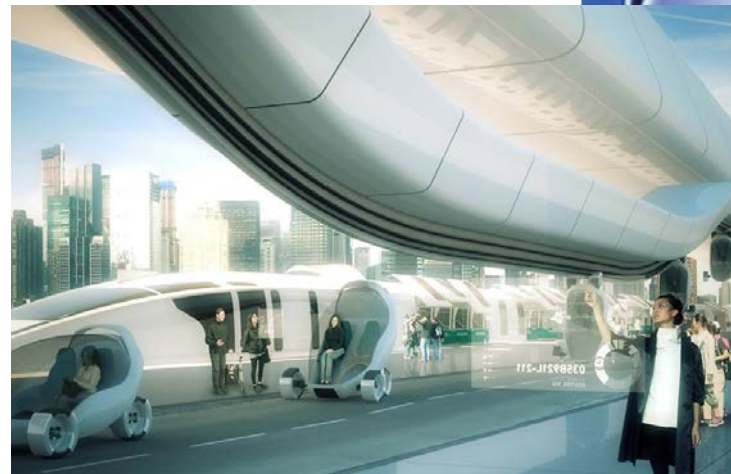
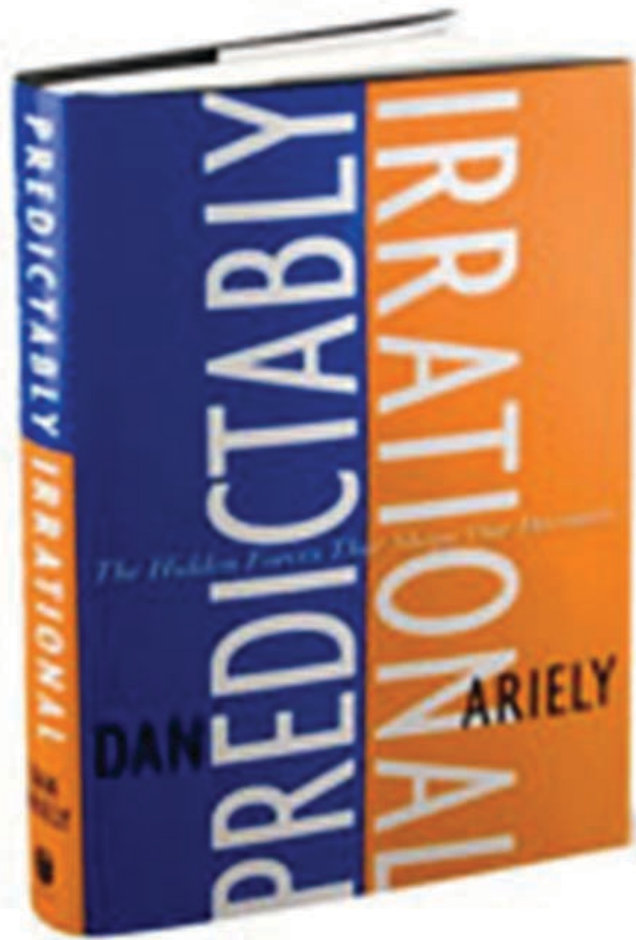
It is not due to the
INSATIABILITY of a fe



the many.



Human Apathy



don't see a
particular person
suffering.



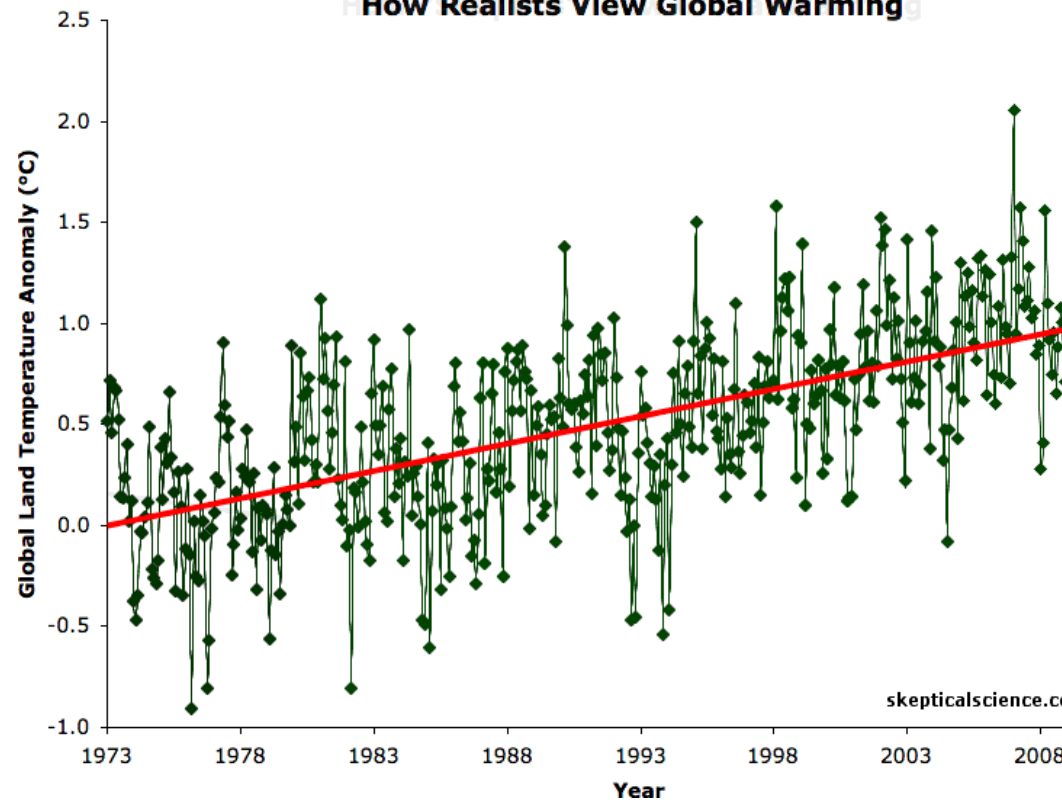
fects others 1st.



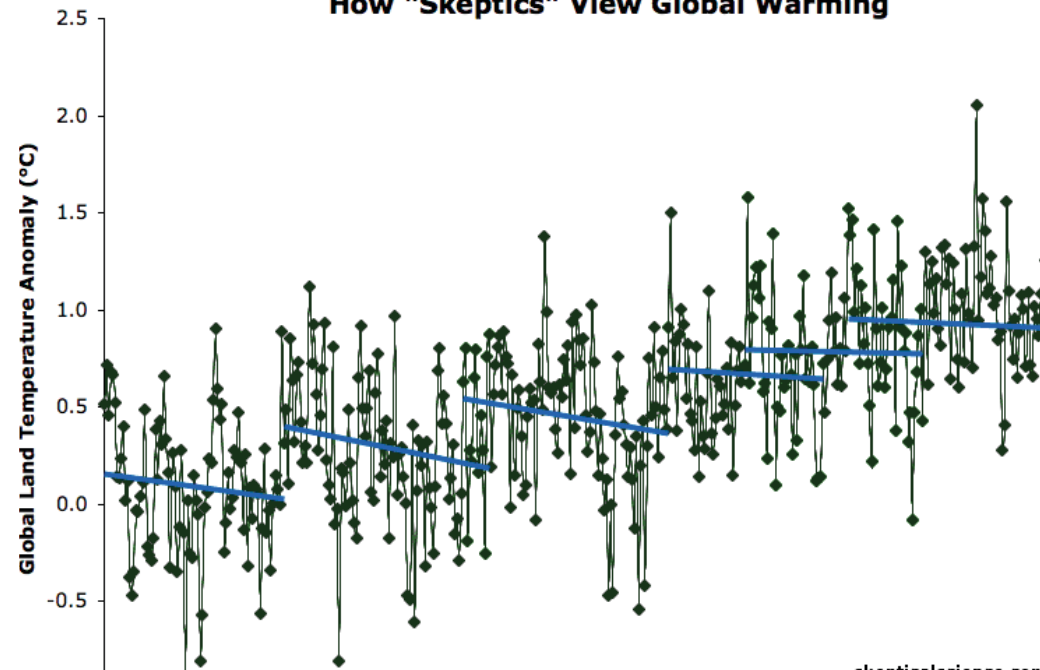
Unaware of its progression.



How Realists View Global Warming



How "Skeptics" View Global Warming



Individual efforts to
mitigate are a drop in
the bucket.



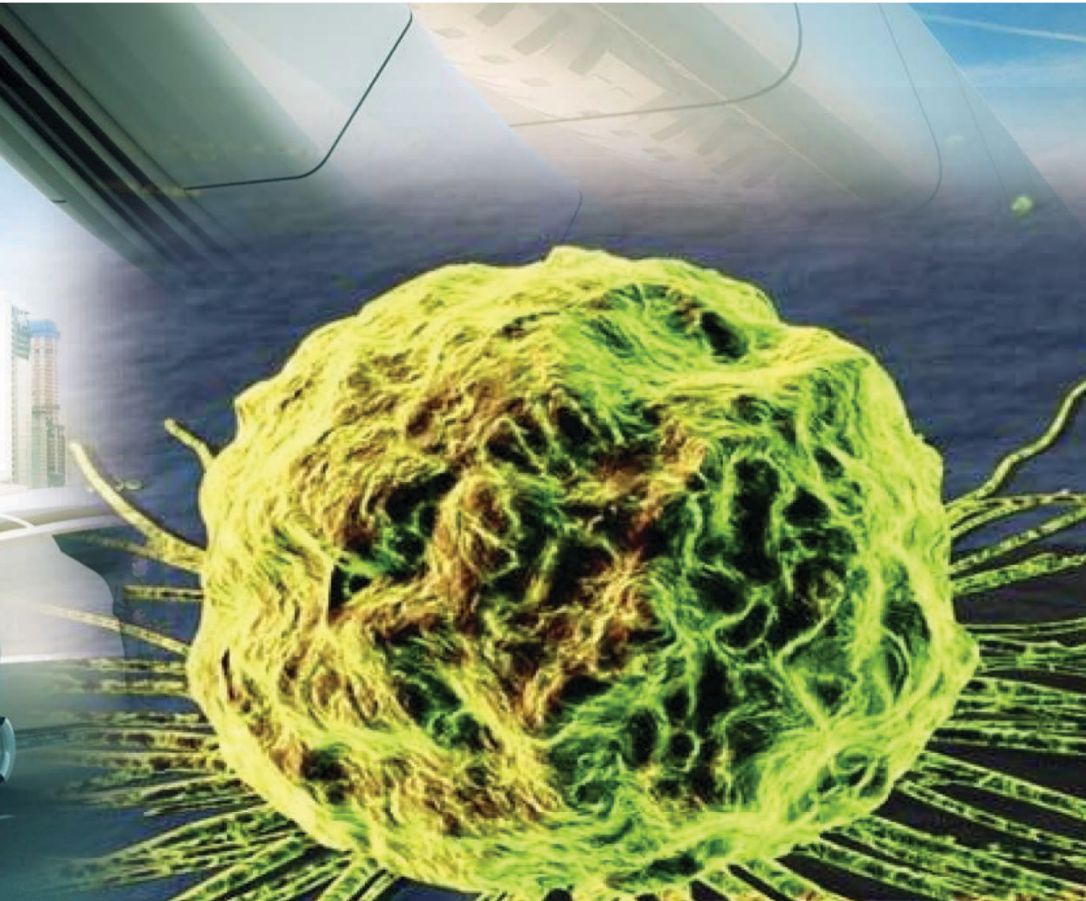
Far in the future



156 million people
an alluvial plane.



Far in the future

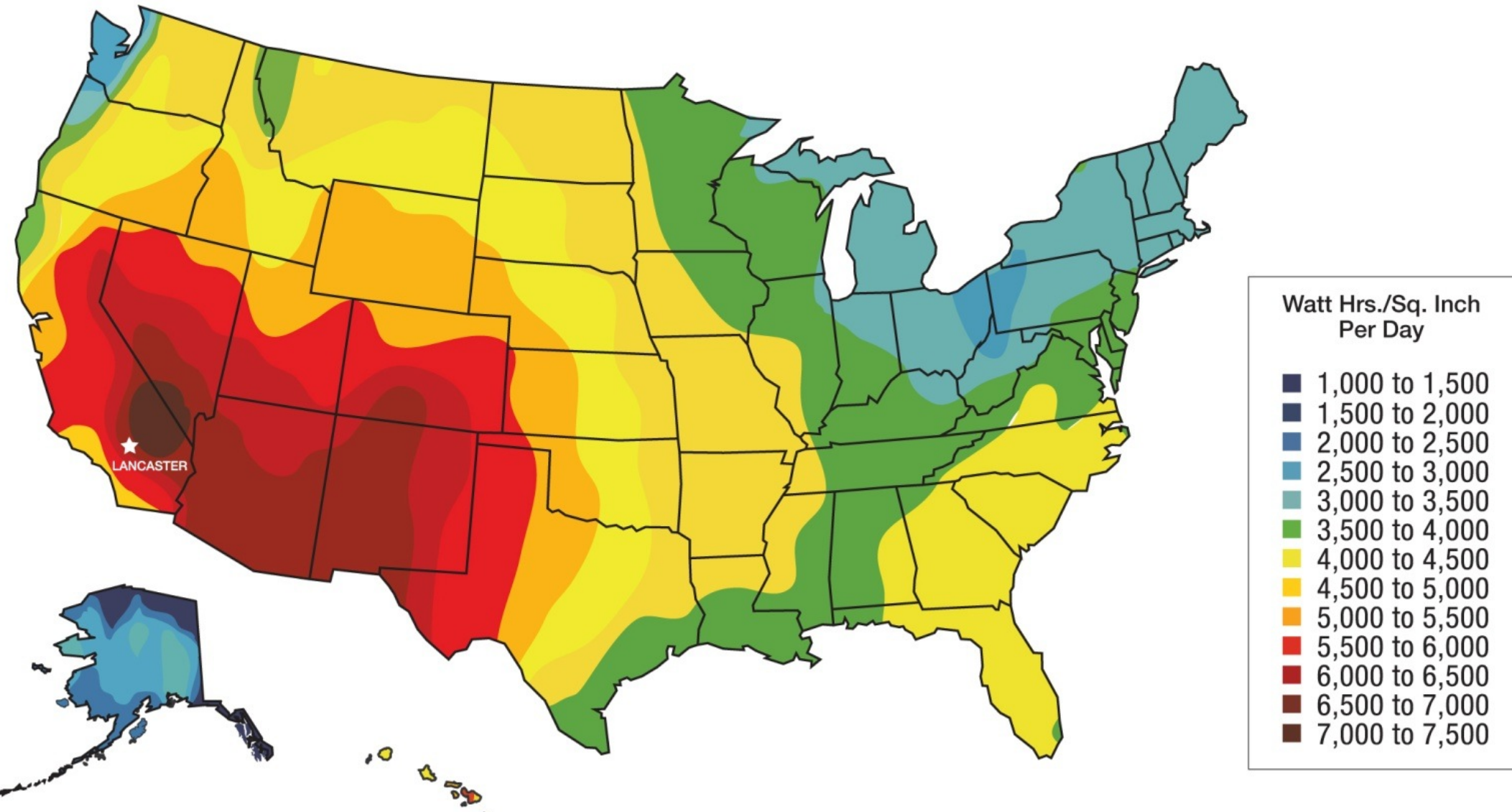


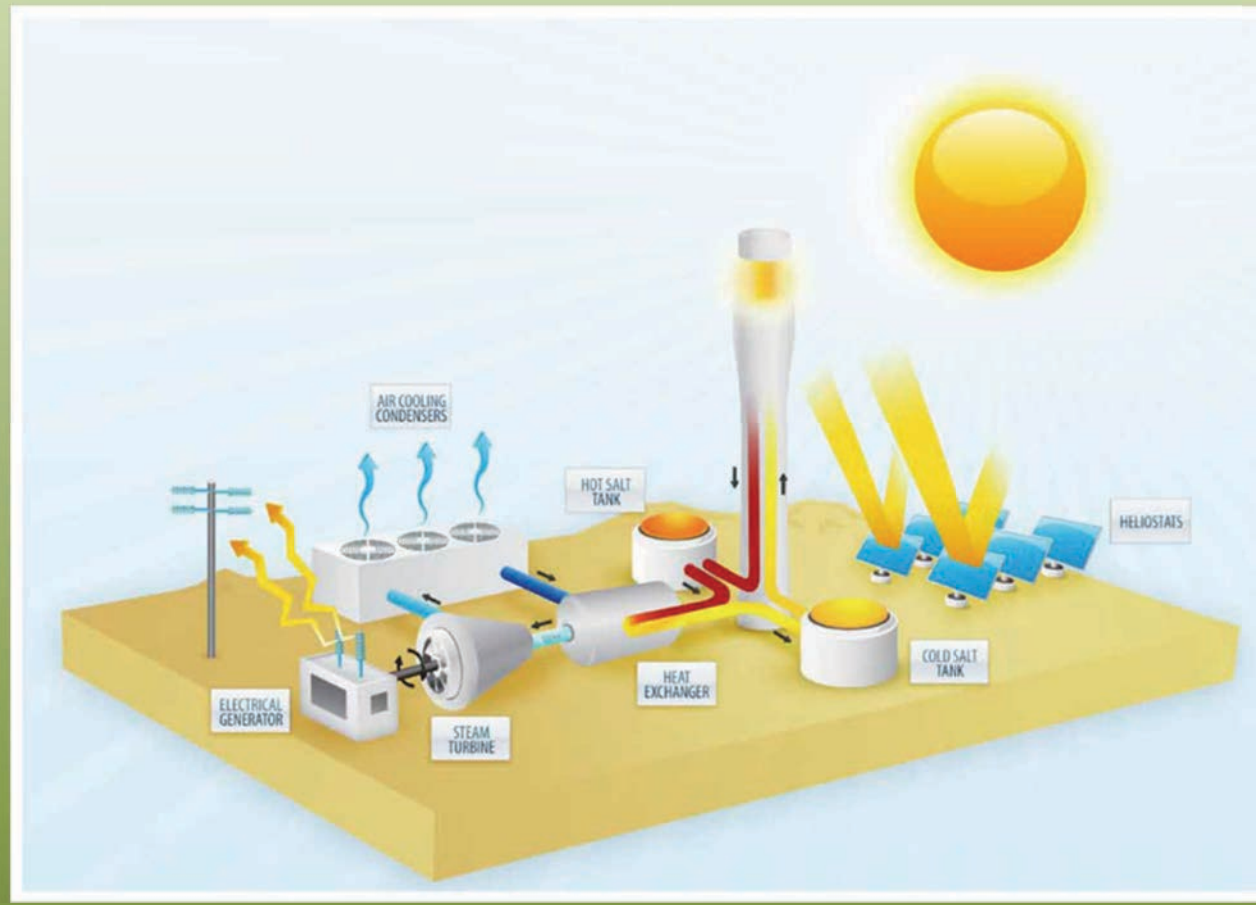
on people of
uvial plane.



Lancaster and the Lottery

US Solar Radiation Map







96% Municipal Buildings

29% City's electricity

100% In Four More Years





Build Your Dream

B
ME



CORPORATION OF THE
BUILDING

Permit No:

2003-

This card **MUST BE KEPT**
and visible
If lost or defaced and

DATE ISSUED: SE



ewards of
artnership







Dawn Creek – Residence Three
zeroHOUSE 2.0

ESTIMATED MONTHLY ELECTRIC COSTS
FOR HOME COOLING AND VENTILATION
SYSTEMS, APPLIANCES AND LIGHTING

\$0

Actual energy consumption and costs will vary.

ESTIMATED MONTHLY GAS COSTS
FOR STOVE, DRYER, HOT WATER
& SPACE HEATING SYSTEMS

\$43

Actual energy consumption and costs will vary.



© 2014 KB Home (KBH). The energy efficiency level and the estimated energy costs and savings shown for this home plan are determined per the California Energy Commission (CEC) Home Energy Rating System Program (Program) using CEC-certified computer software and CEC-mandated inputs and certain assumed conditions as to specific standard features of the home as designed. Each is based on the applicable standard or optional upgrade heating and cooling systems, appliances and lighting that are included with the home design and average local energy utility rates available at the time of determination. Optional upgrade features include a higher capacity solar energy system, and may include, among others, more efficient heating, ventilation and air conditioning systems, higher insulation, and/or higher performance windows. Optional upgrade features are available at an additional cost, may require selection before pre-determined stages of construction, and are subject to change or discontinuation by KB Home at any time. Not all optional upgrade features are available in all communities or for all home plans. The estimated energy costs and savings shown do not include or take into account any applicable local, state or federal taxes and/or regulatory or energy utility provider-imposed fees, taxes or charges. The estimated savings shown on the EPG compares this home plan's estimated energy costs to a calculation of energy costs of a vintage home (built in 1984-1991) using corresponding vintage home features, as published by the CEC or, for appliances and lighting, assumed for that period. The typical new home energy efficiency level shown represents a home as built to the 2008 California Building Energy Efficiency Standards (Standards). The resale home energy efficiency range is a comparison to the energy efficiency level of a home as built to the Standards. KB Home does not warrant or guarantee that the energy efficiency level for an as-built home will be equal to or lower than the home's as-designed level as shown for this home plan, or that any measure of energy costs or savings will be achieved.



Community Choice Aggregation

we are deciding now.

