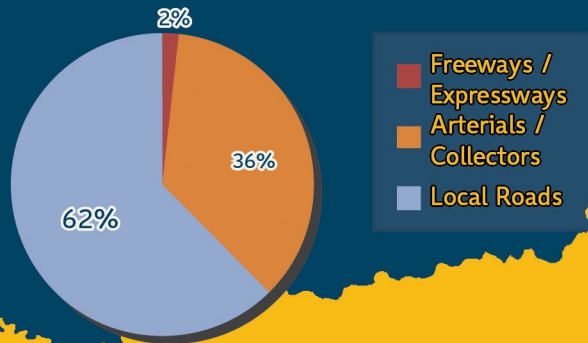


Fresno County Roadways and Transportation

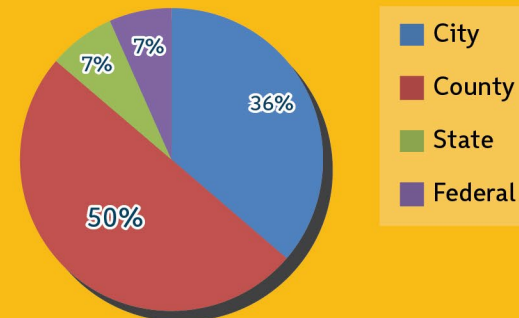
Current Snapshot



Road Miles by Functional Classification

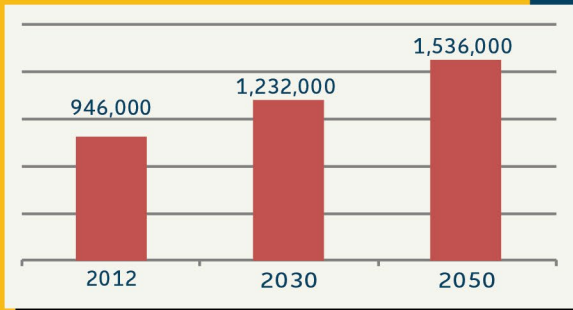


Road Miles Maintained by Agency

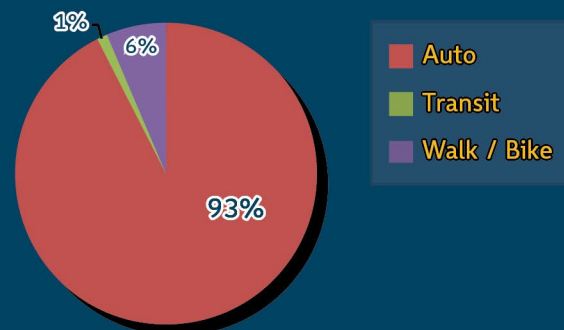


Total lane miles = **15,931**
 Lane miles per thousand residents = **16.8**

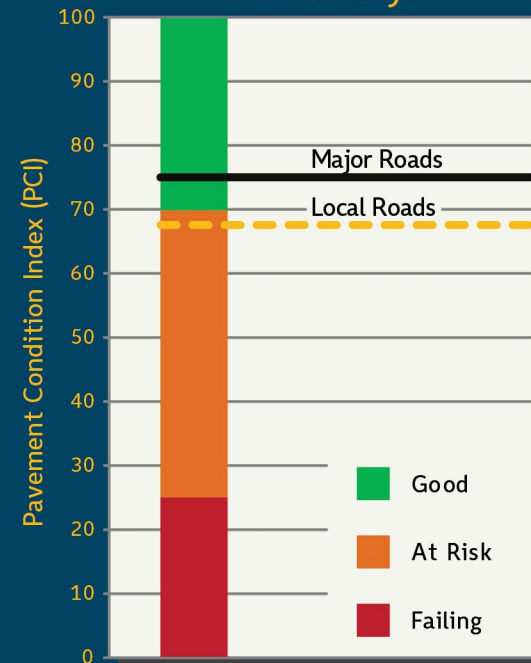
Total County Population



Mode Split for All Trips



Current Condition of Roadways

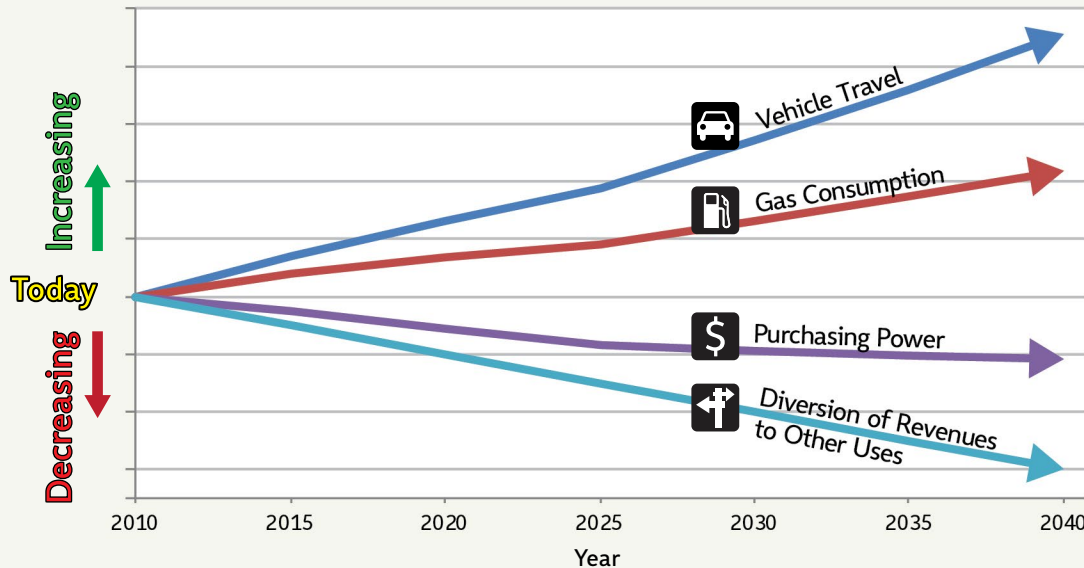


Fresno County Roadways and Transportation

Falling Revenues, Growing Need



Gas Tax Revenue Trends

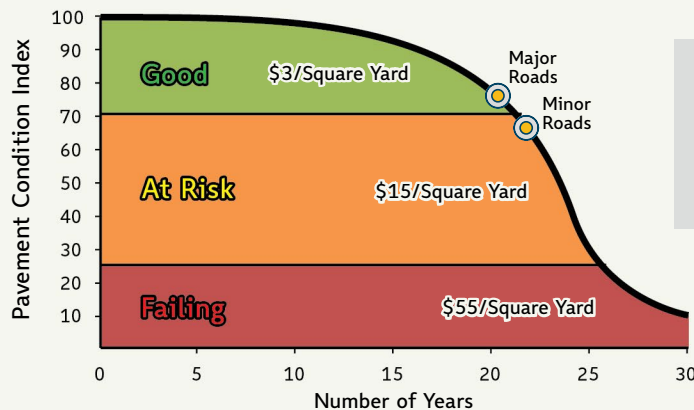


What Other Facilities Have Maintenance Shortfalls?

While pavement maintenance is the focus of this research, other types of transportation infrastructure face similar maintenance shortfalls. Infrastructure examples include:

- Transit capital (buses, guideways, and stations)
- Pedestrian infrastructure (sidewalks and trails)
- Street lights
- Traffic signals
- Signs

Growing Need



Over time, as pavement quality degrades, the cost to restore pavement to its original condition increases dramatically.

Fresno County 2035 Regional Transportation Plan

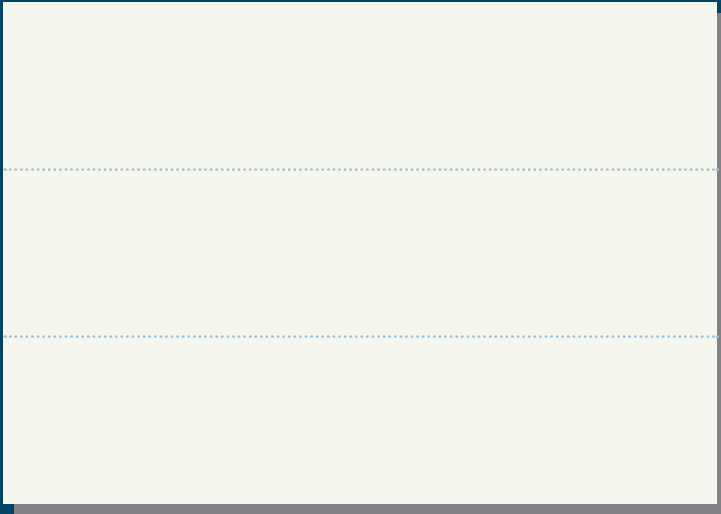
Allocates over \$2.3 billion to major highway expansion, increasing countywide lane miles by over 5%.

The current RTP estimates a \$31 million maintenance funding shortfall annually, or \$740 million over the life of the RTP.

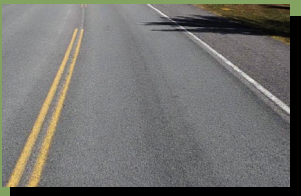
Fresno County Roadways and Transportation Pavement Maintenance Scenarios



Select Annual Spending Scenario

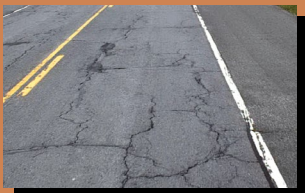


Pavement Condition



Good

Pavement Condition Index:
70 - 100



At Risk

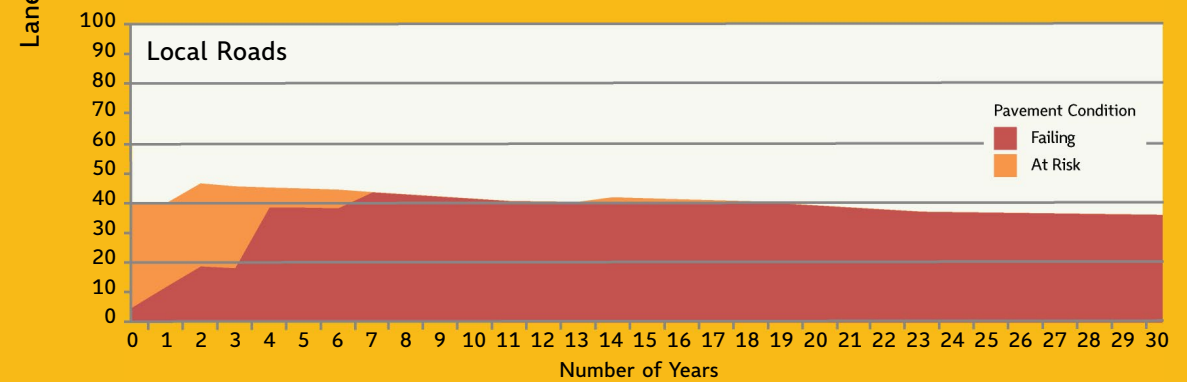
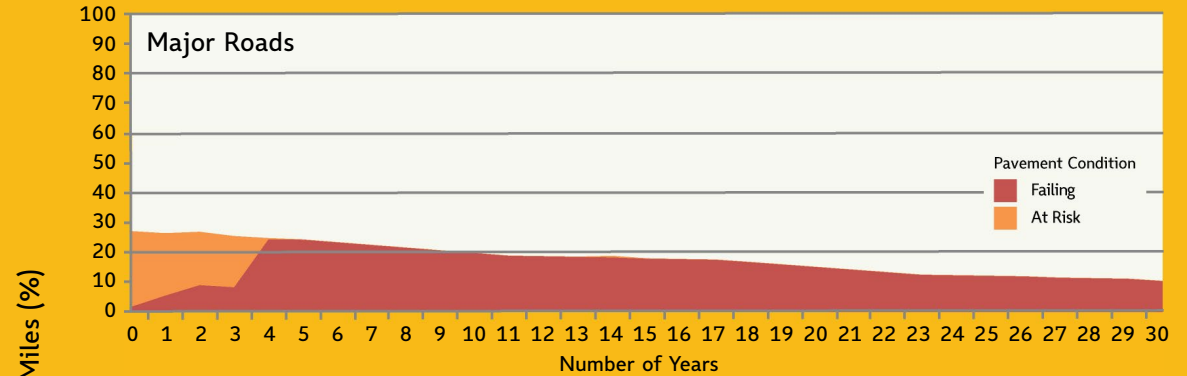
Pavement Condition Index:
25 - 69



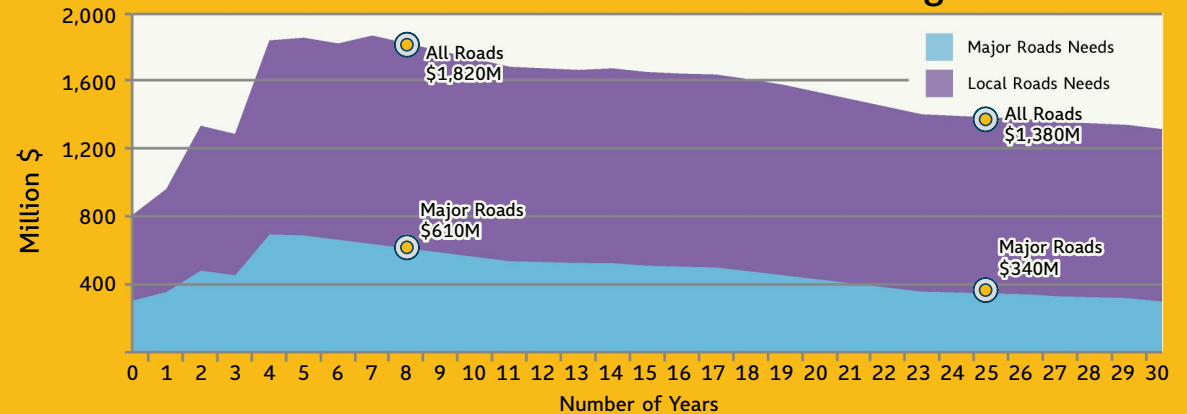
Failing

Pavement Condition Index:
0 - 24

Roadway Quality



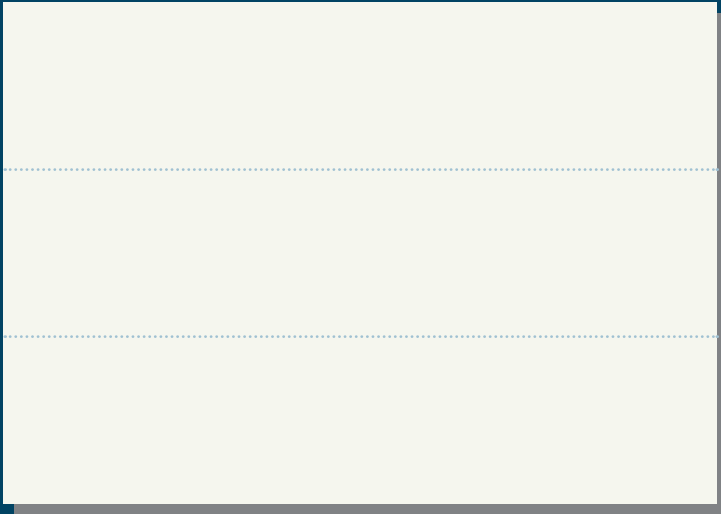
Pavement Maintenance Backlog



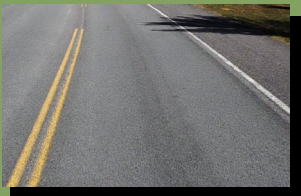
Fresno County Roadways and Transportation Pavement Maintenance Scenarios



Select Annual Spending Scenario

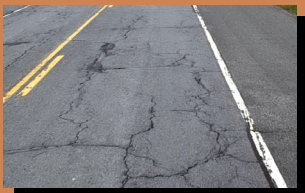


Pavement Condition



Good

Pavement Condition Index:
70 - 100



At Risk

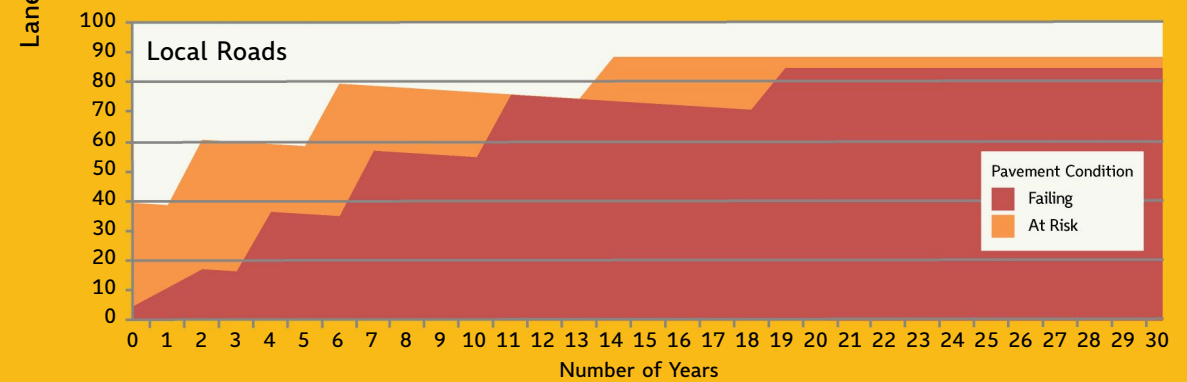
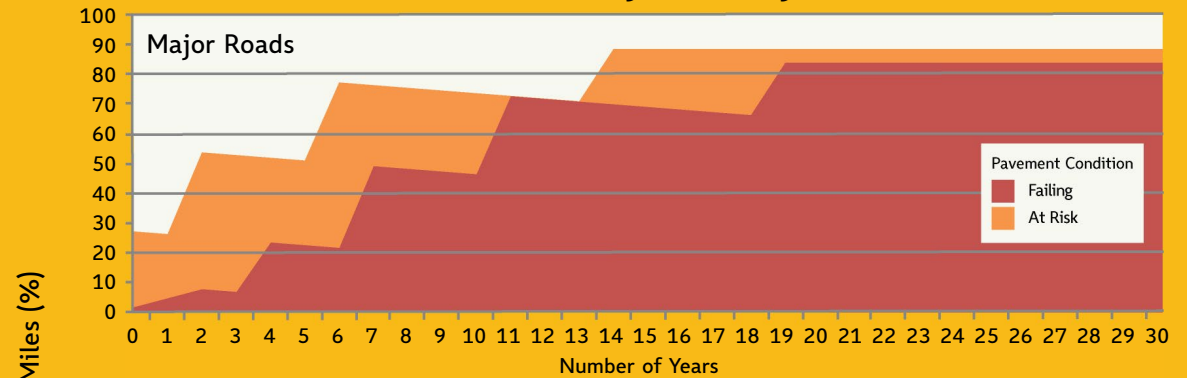
Pavement Condition Index:
25 - 69



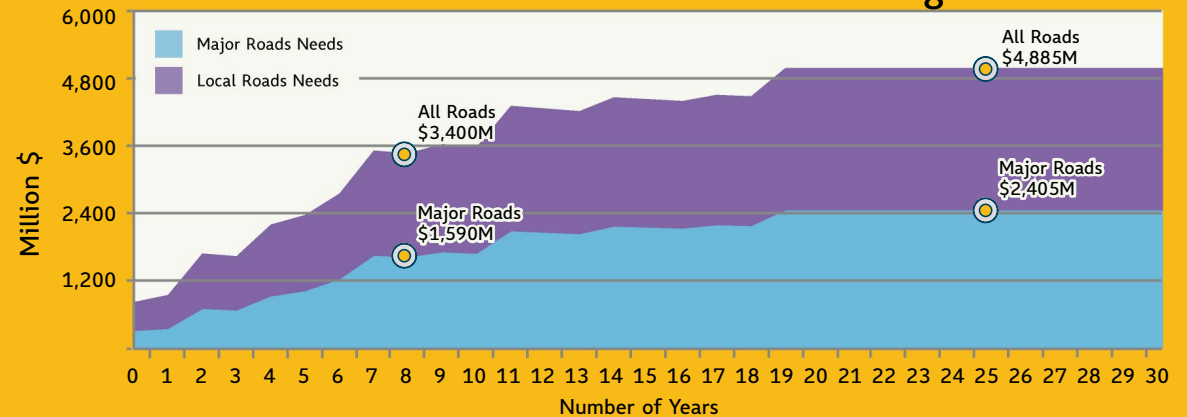
Failing

Pavement Condition Index:
0 - 24

Roadway Quality



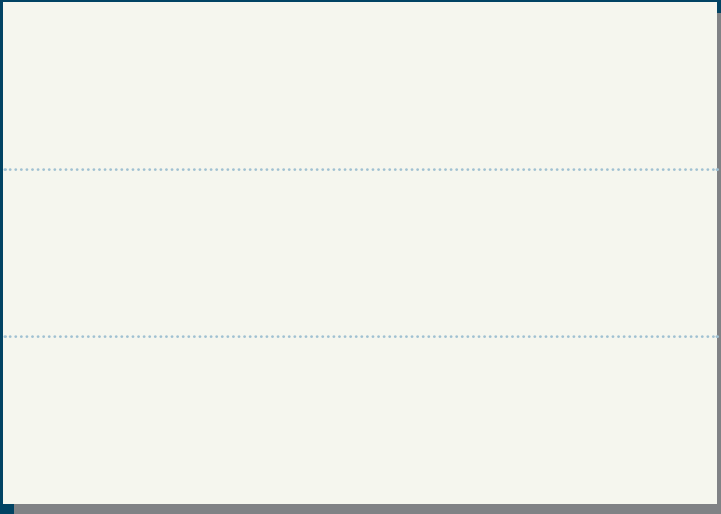
Pavement Maintenance Backlog



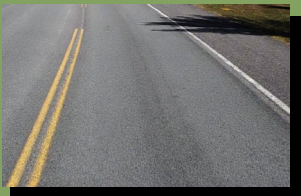
Fresno County Roadways and Transportation Pavement Maintenance Scenarios



Select Annual Spending Scenario

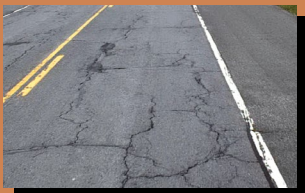


Pavement Condition



Good

Pavement Condition Index:
70 - 100



At Risk

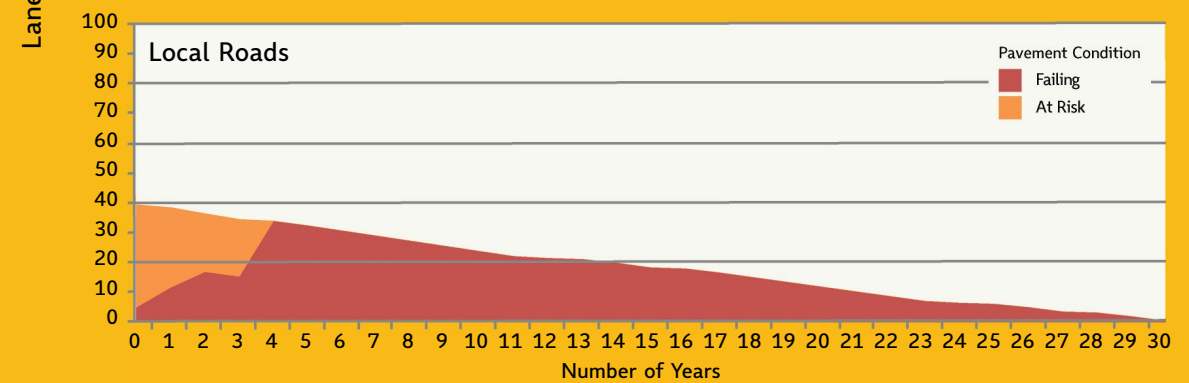
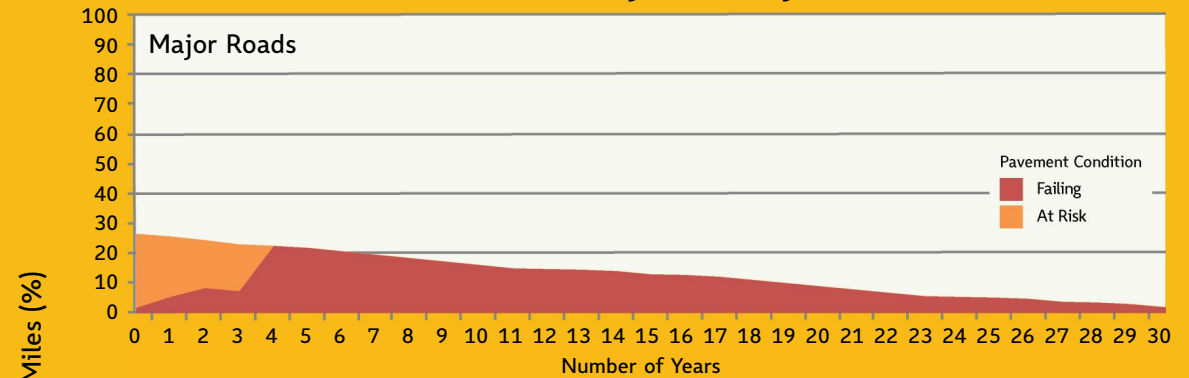
Pavement Condition Index:
25 - 69



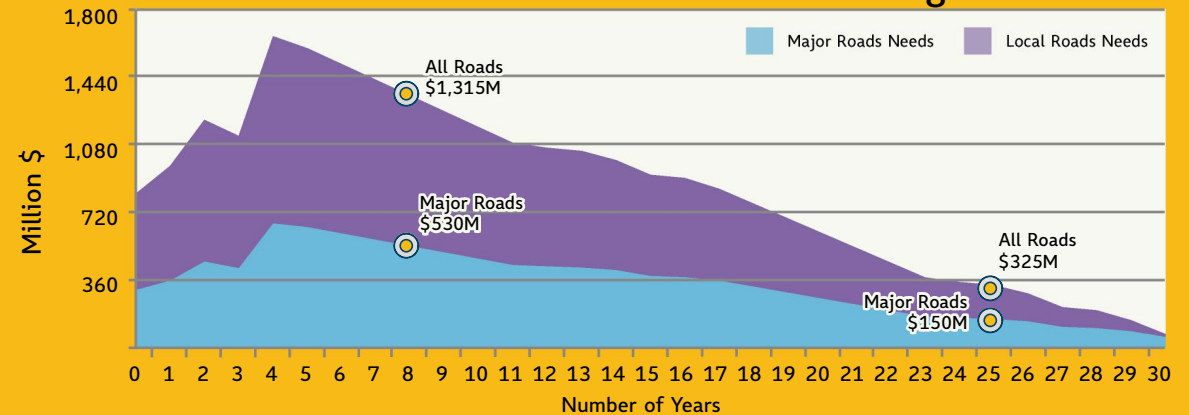
Failing

Pavement Condition Index:
0 - 24

Roadway Quality



Pavement Maintenance Backlog





Below is a compilation of sources used to develop this infographic

Maintenance Funding:

- California State Controller's Office, Streets and Roads Annual Reports, Fiscal Years 2005 through 2010.

Lane Miles, Pavement Conditions, and Maintenance Costs:

- League of California Cities, California Statewide Local Streets and Roads Needs Assessment, February 2009 and February 2011.
- Caltrans Highway Performance Monitoring System, 2011 California Public Road Data.
- Fehr & Peers, San Joaquin Valley Model Improvement Project, 2012.

Transportation Revenue Trends:

- Bay Area Air Quality Management District and California Air Resources Board, Fleet Fuel Economy Assumptions based on Low Carbon Fuel Standard, 2009
- Caltrans, Price Index for Selected Highway Construction Items, September 2012
- Caltrans, 2008 California Motor Vehicle Stock, Travel and Fuel Forecast, June 2009
- Conway Pederson Economics, Inc., Forecast of US Consumer Price Index, Puget Sound Economic Forecaster

Other Data:

- California Department of Finance, E-1 Population Estimates for Cities, Counties, and the State.
- Fresno COG, 2011 Regional Transportation Plan, July 2010.